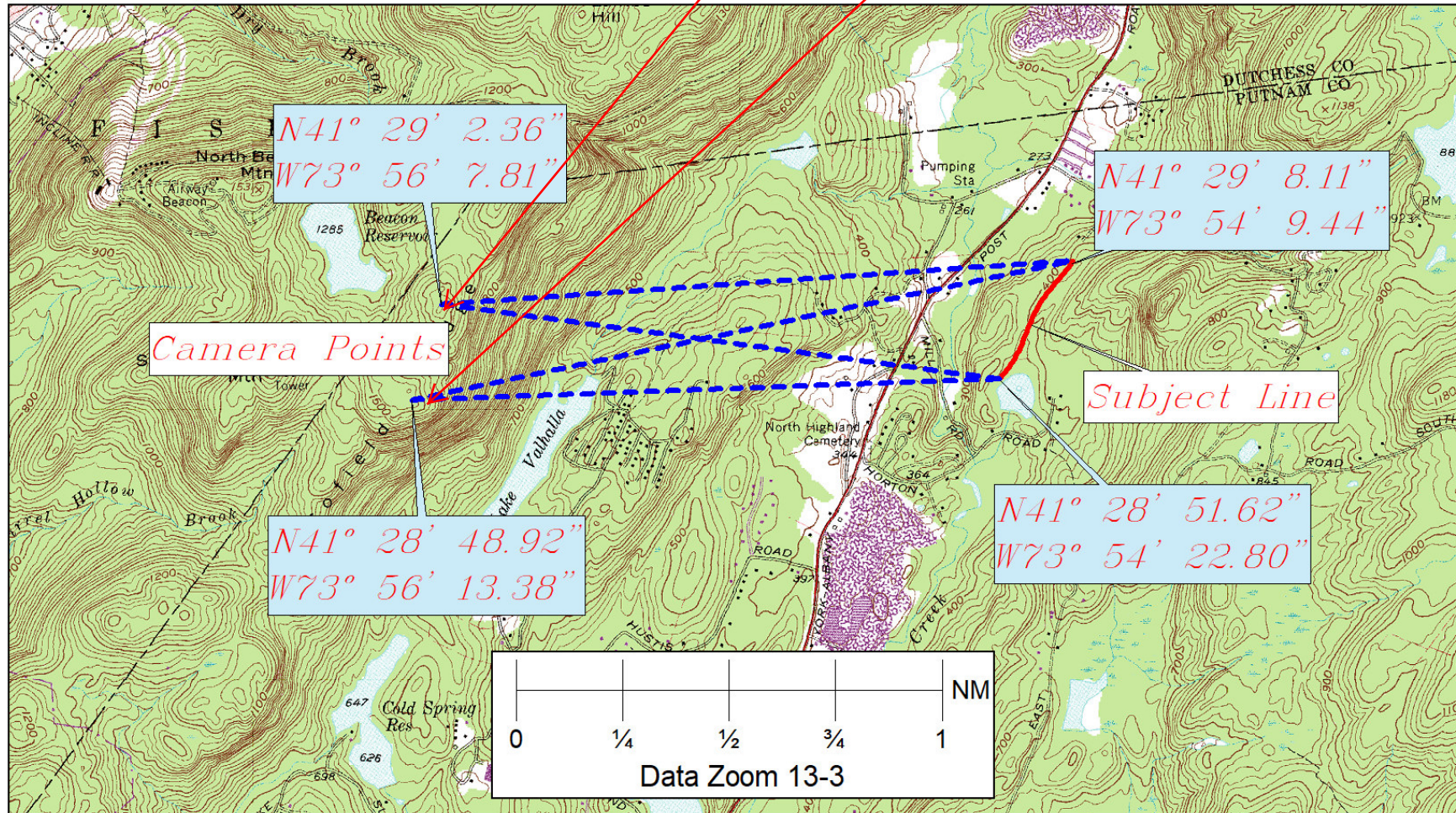


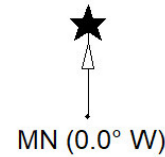
**APPENDIX E**  
**VISUAL IMPACT FIGURES**

DeLORME

XMap® 4.5



Data use subject to license.  
 © 2004 DeLorme. XMap® 4.5.  
 www.delorme.com



# HUDSON HIGHLAND RESERVE TOWN OF PHILIPSTOWN PUTNAM COUNTY NEW YORK

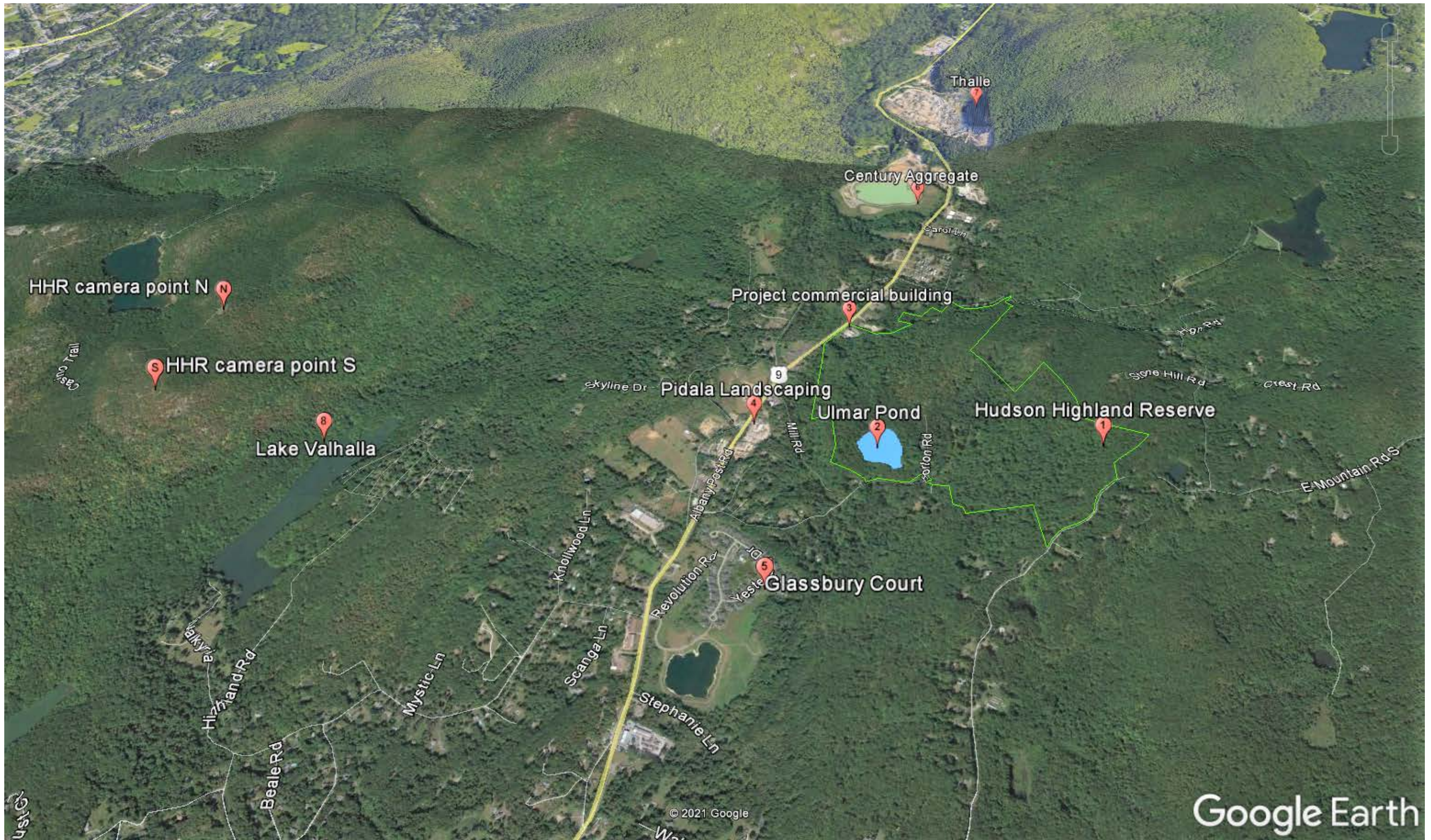
## VISUAL IMPACT ANALYSIS from SCOFIELD RIDGE

prepared by:



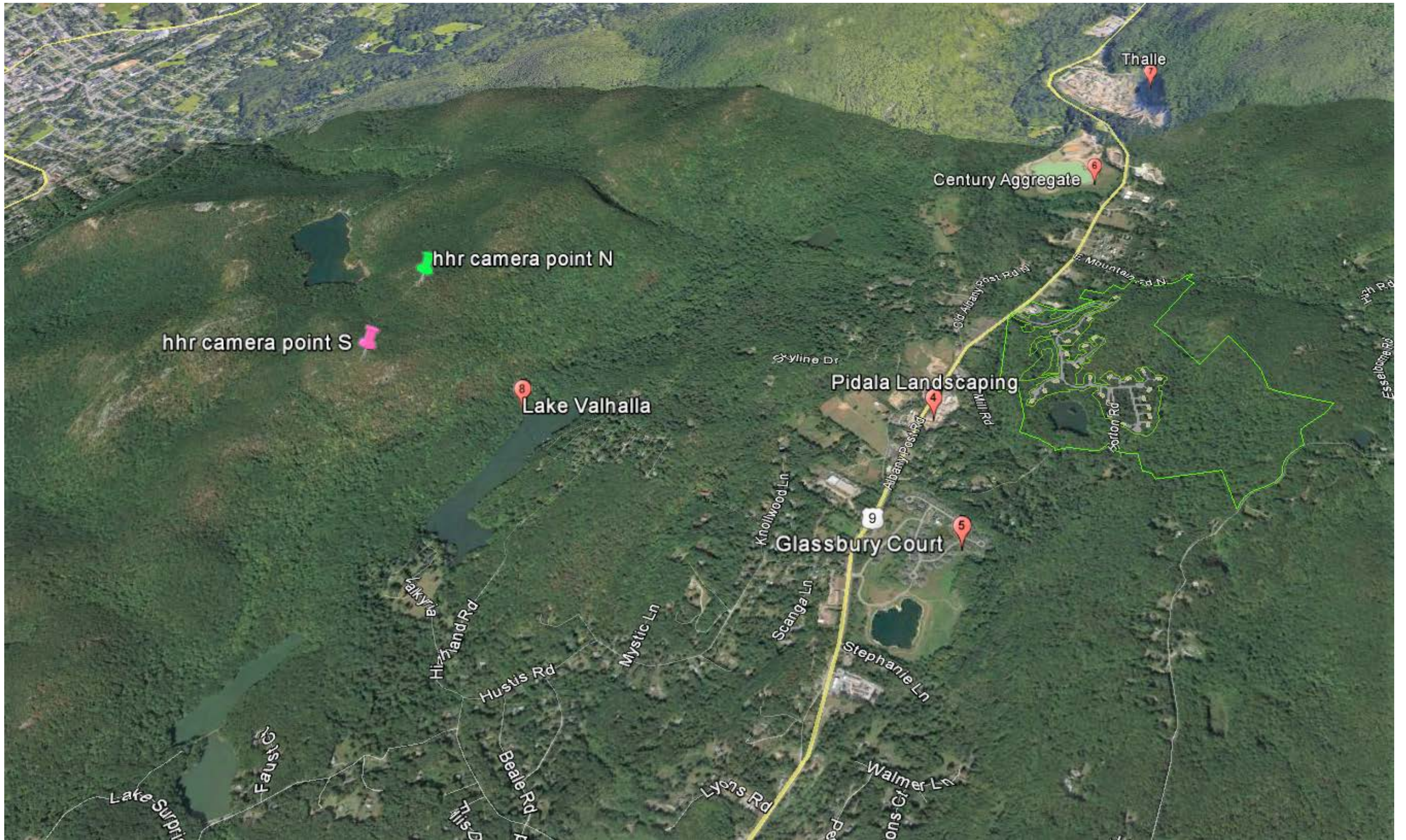
3063 Route 9  
 Cold Spring, NY 10516  
 845.265.9217  
 877. 3.141593 (Toll Free)  
 845.265.4428 (Fax)  
 www.Badey-Watson.com



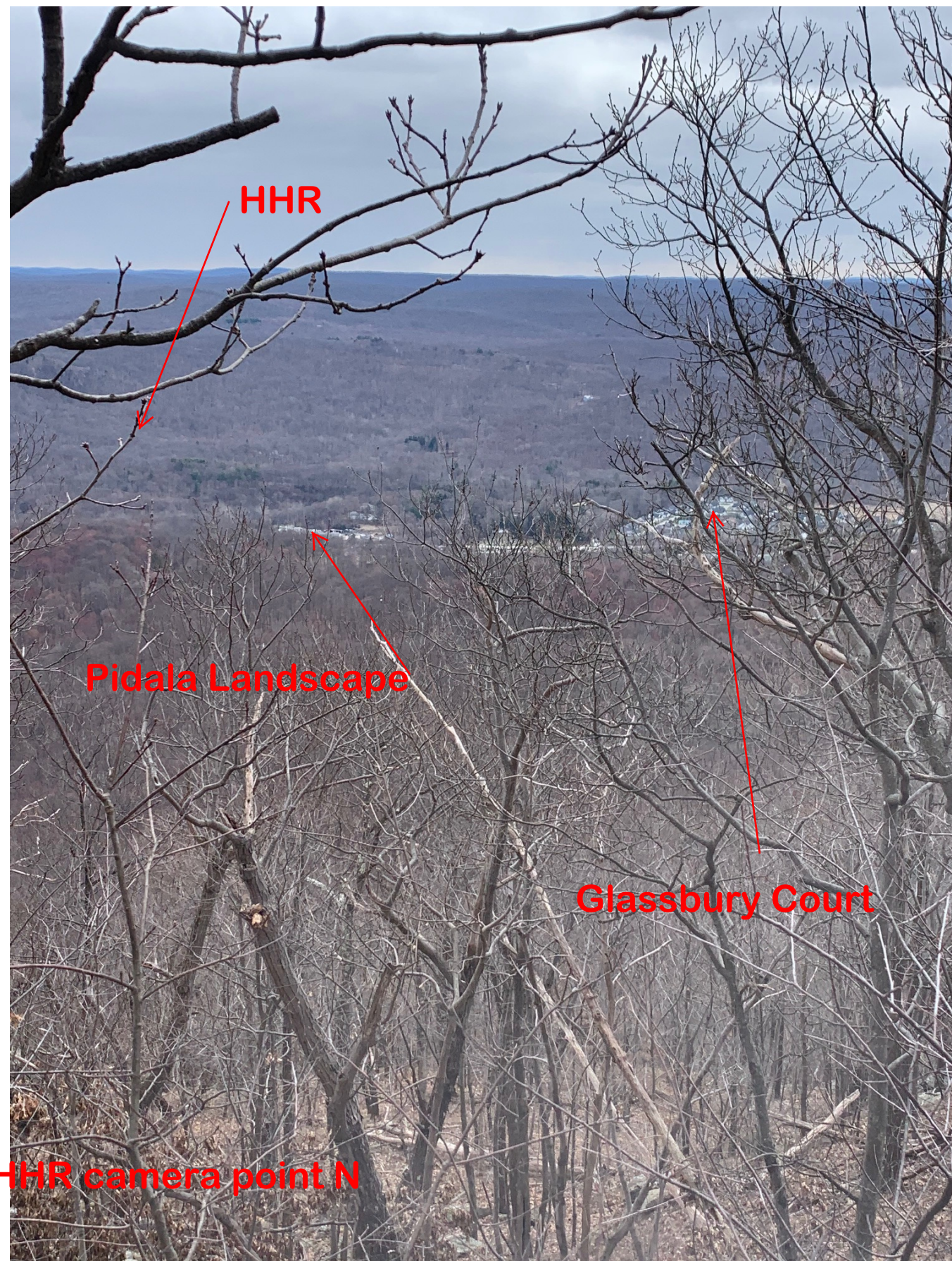
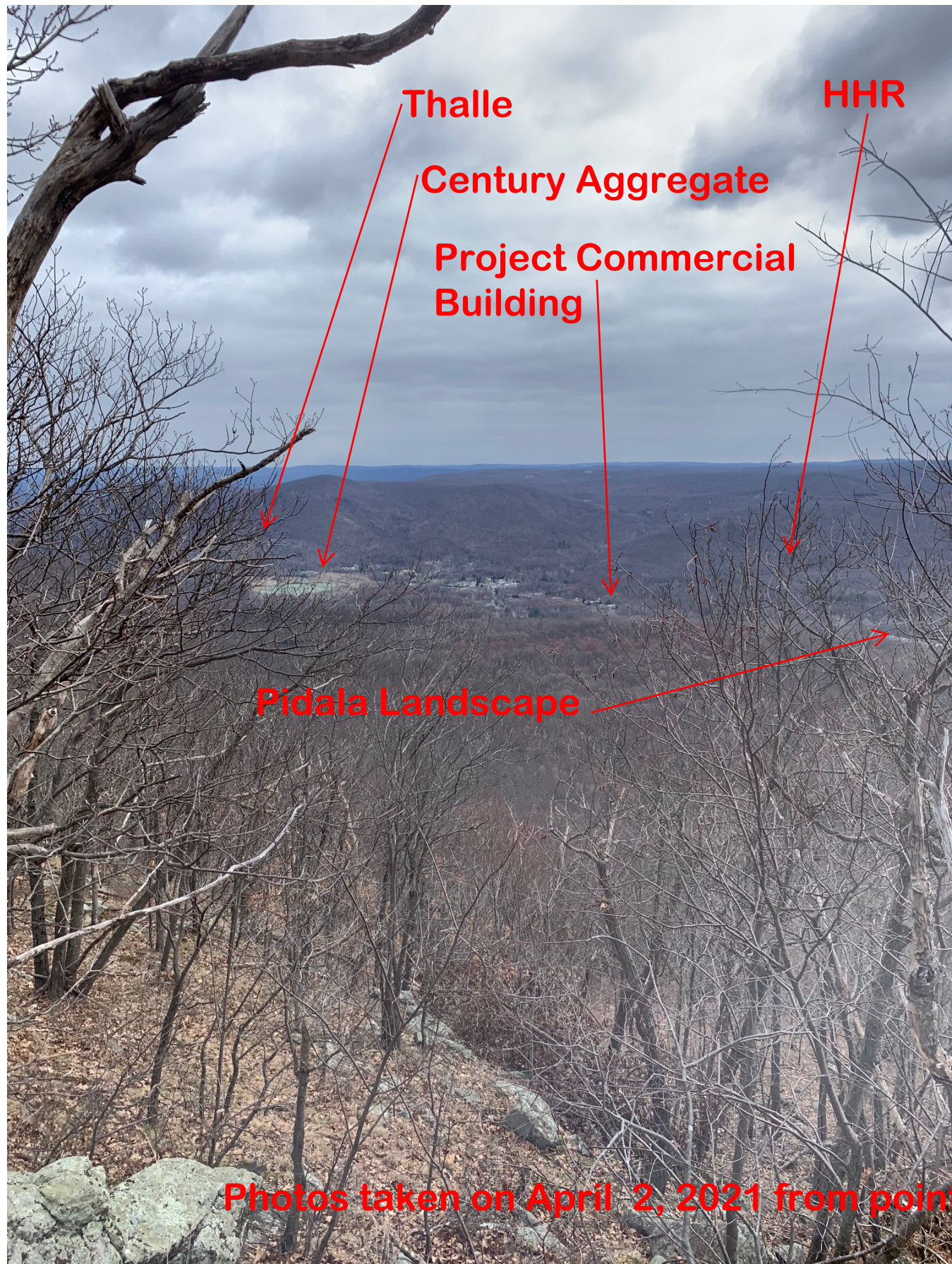


Google Earth



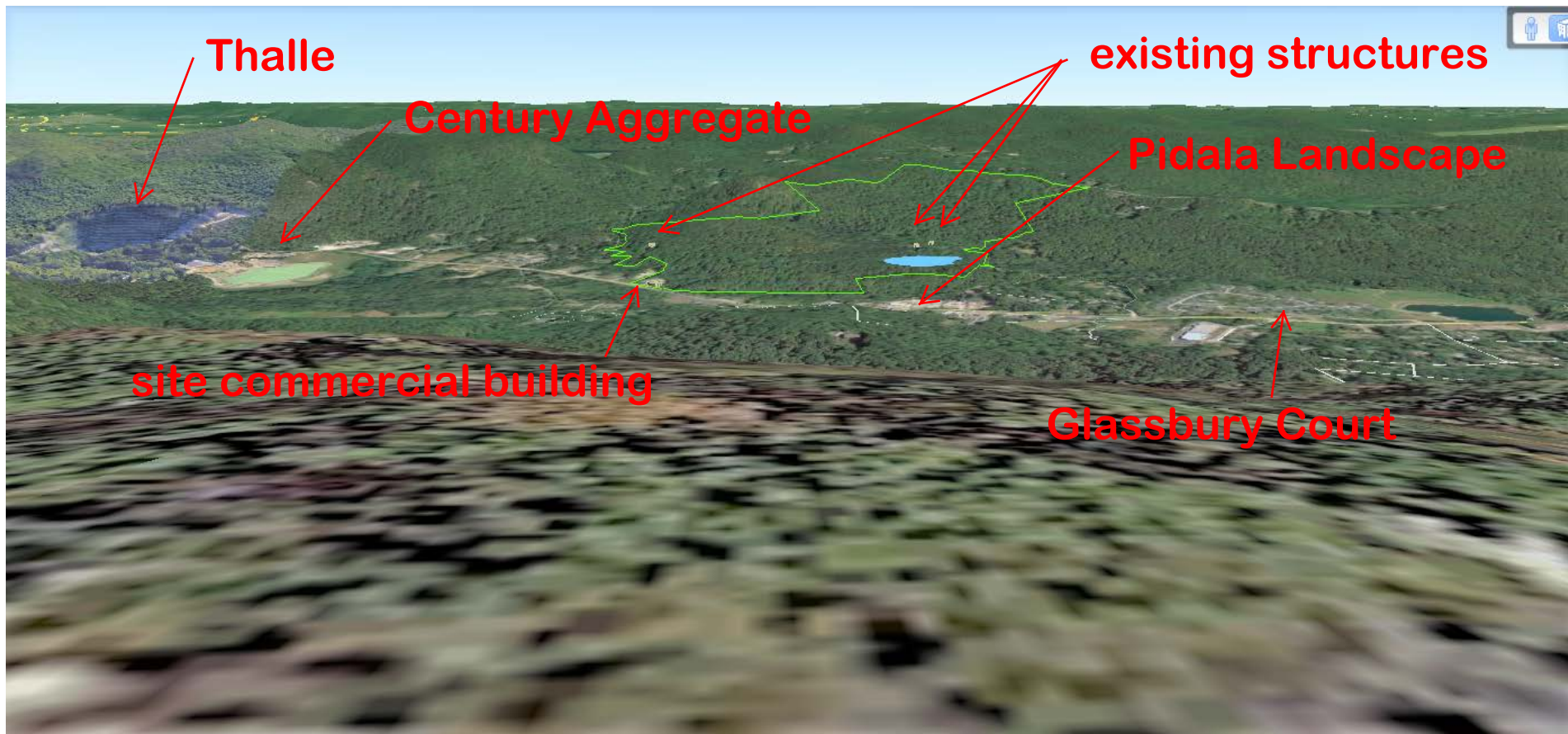






Photos taken on April 2, 2021 from point labeled HHR camera point N





Google Earth screenshot from "HHR camera point N"

Added to the screenshot:

- HHR's existing two houses and barn (3D)
- HHR property line
- Ulmar Pond in blue

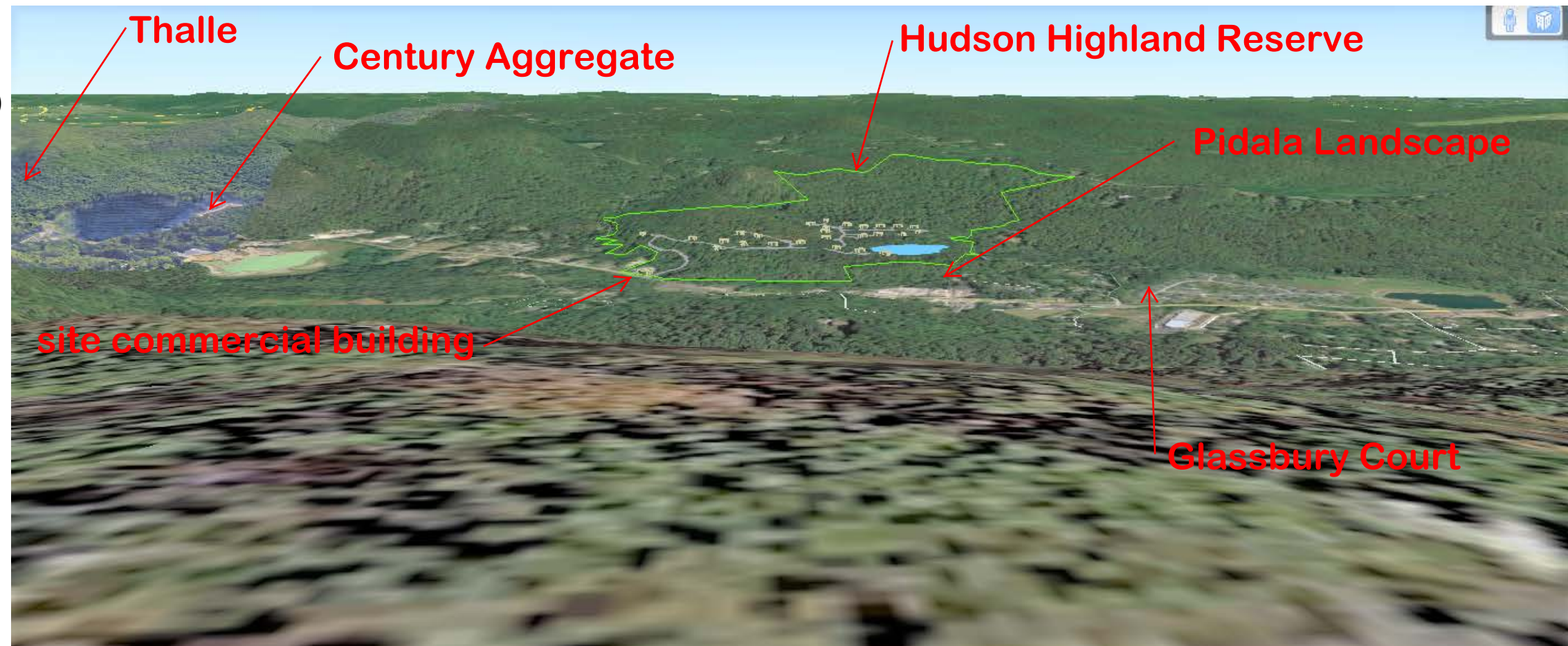
These items were added to assist users' visualization. The existing vegetation appears at ground level and simulates bare earth. As shown on the previous page, these items are not visible from Scofield Ridge because of the surrounding forest.

Google Earth screenshot from "HHR camera point N"

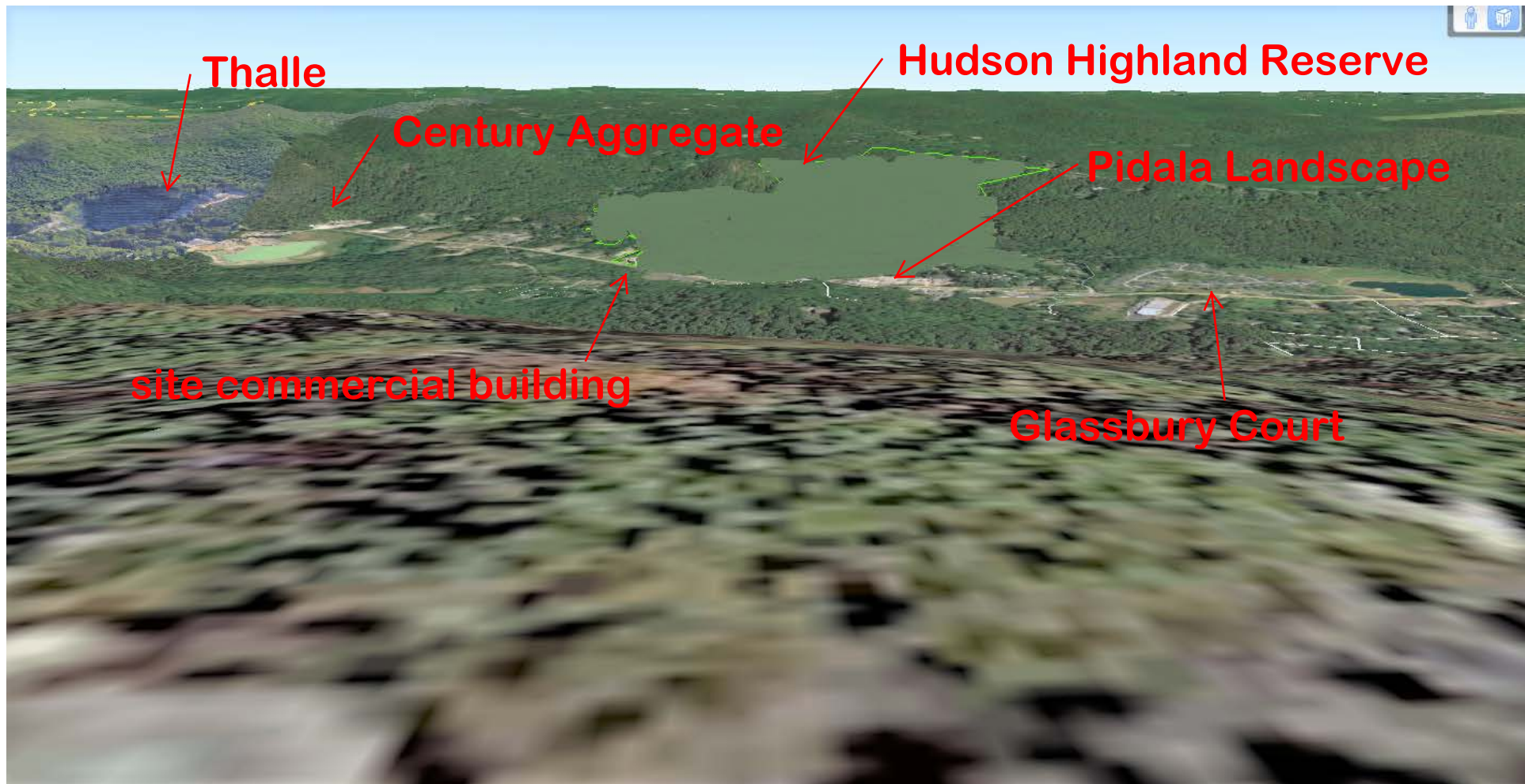
Added to the screenshot:

- HHR's existing two houses and barn (3D)
- HHR property line
- Ulmar Pond in blue
- HHR's features, proposed roads, houses (3D), and driveways

These items were added to assist users' visualization. The existing vegetation appears at ground level and simulates bare earth. As shown on the previous page, these items are not visible from Scofield Ridge because of the surrounding forest.







Google Earth screenshot from "HHR camera point N"

Added to the screenshot:

- HHR's existing two houses and barn (3D)
- HHR property line
- Ulmar Pond in blue
- HHR's features, proposed roads, houses (3D), and driveways
- AND EXISTING TREES in 3D depicting tree top level

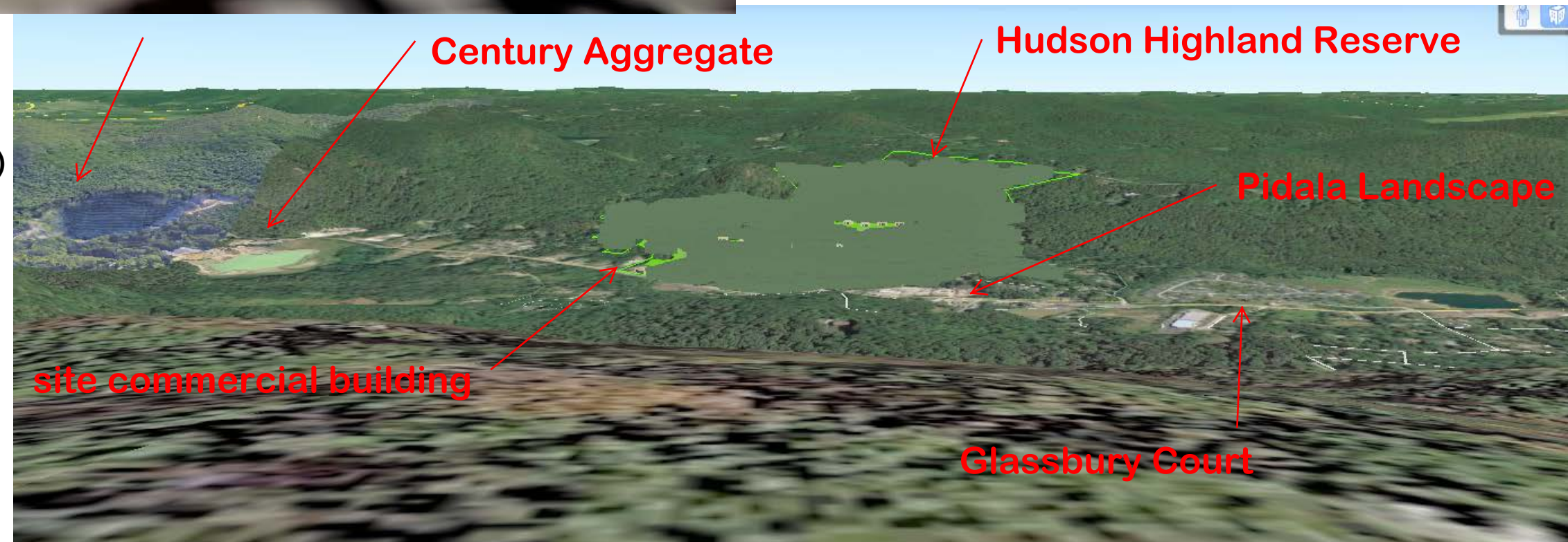
When the existing tree cover, as shown on this image, is added, the features visible on the previous page are concealed.

Google Earth screenshot from "HHR camera point N"

Added to the screenshot:

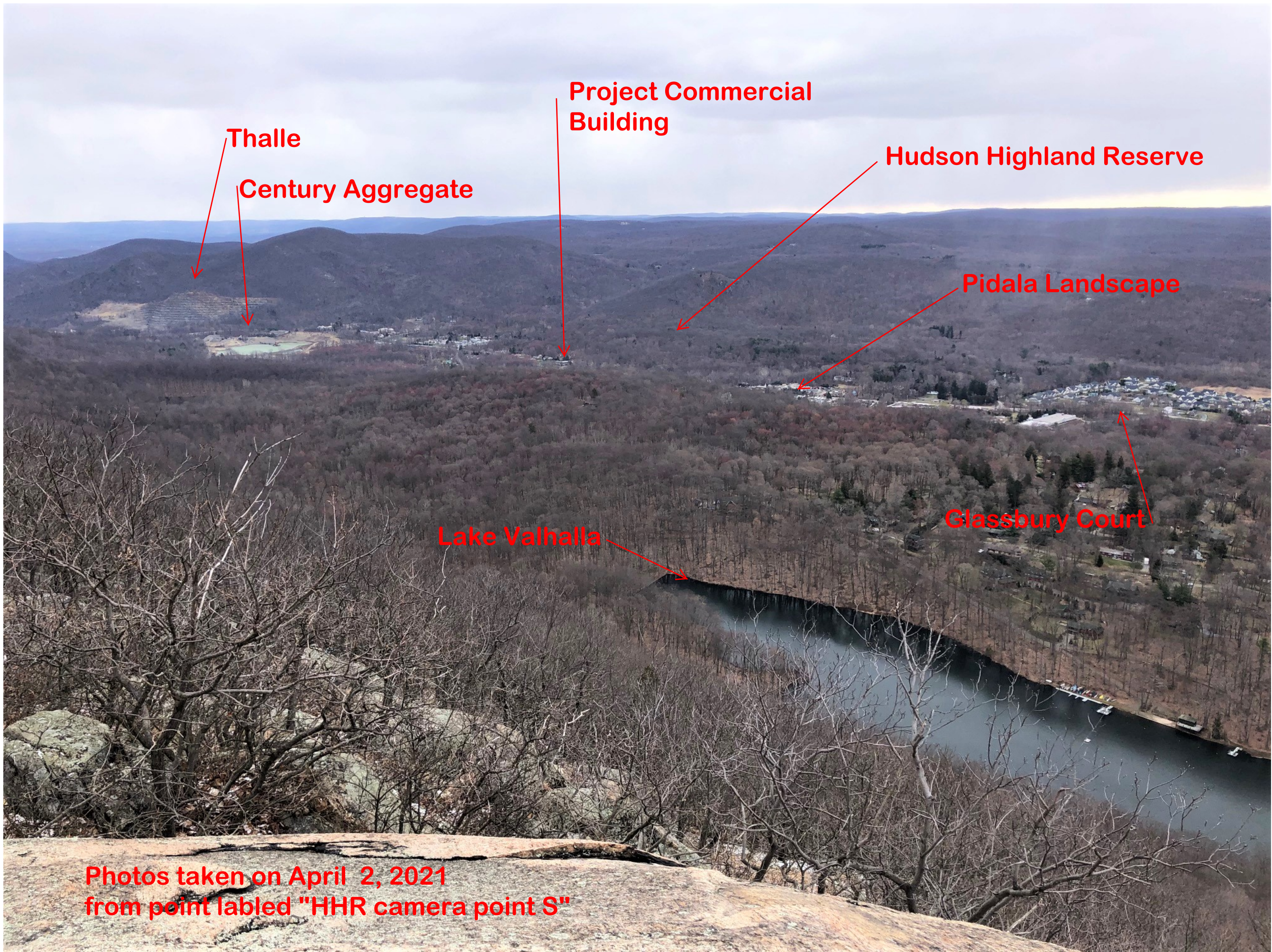
- HHR's existing two houses and barn (3D)
- HHR property line
- Ulmar Pond in blue
- HHR's features, proposed roads, houses (3D), and driveways
- AND EXISTING TREES in 3D depicting tree top level

**TREES REMOVED FROM AREAS OF DISTURBANCE**



When 3D trees are eliminated from within the limit of disturbance, it becomes apparent that the entry road will be visible, as will parts of the houses on lots 3 & 5, Lot 23 and Lots 15 thru 18. Visibility along the entry road can be mitigated with the installation of street trees. Visibility in the vicinity of Lots is relatively minor and not dissimilar to other developed areas that dapple the hillside.





**Thalle**

**Century Aggregate**

**Project Commercial Building**

**Hudson Highland Reserve**

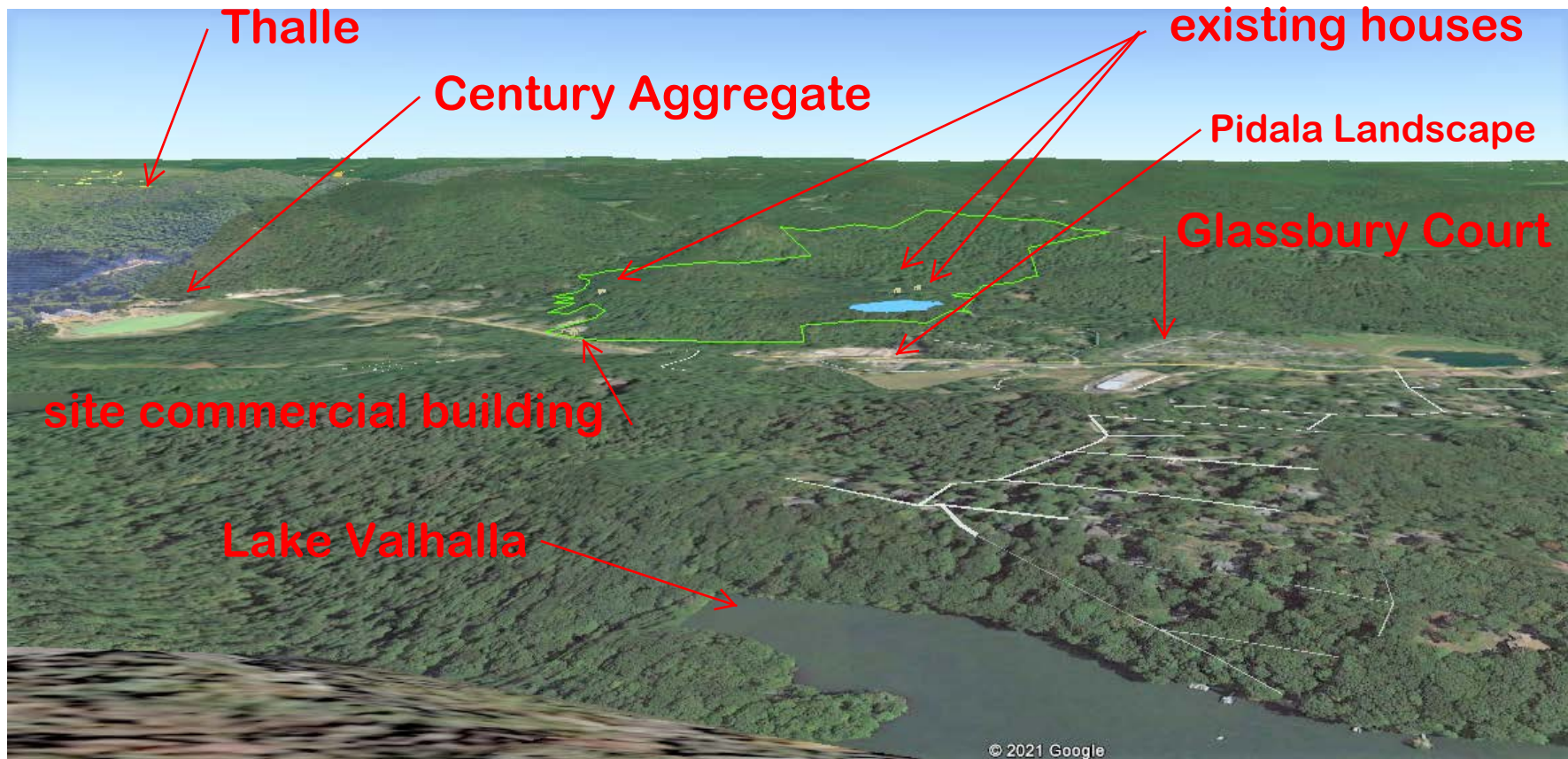
**Pidala Landscape**

**Glassbury Court**

**Lake Valhalla**

**Photos taken on April 2, 2021  
from point labled "HHR camera point S"**





Google Earth screenshot from "HHR camera point S"  
 Added to the screenshot:

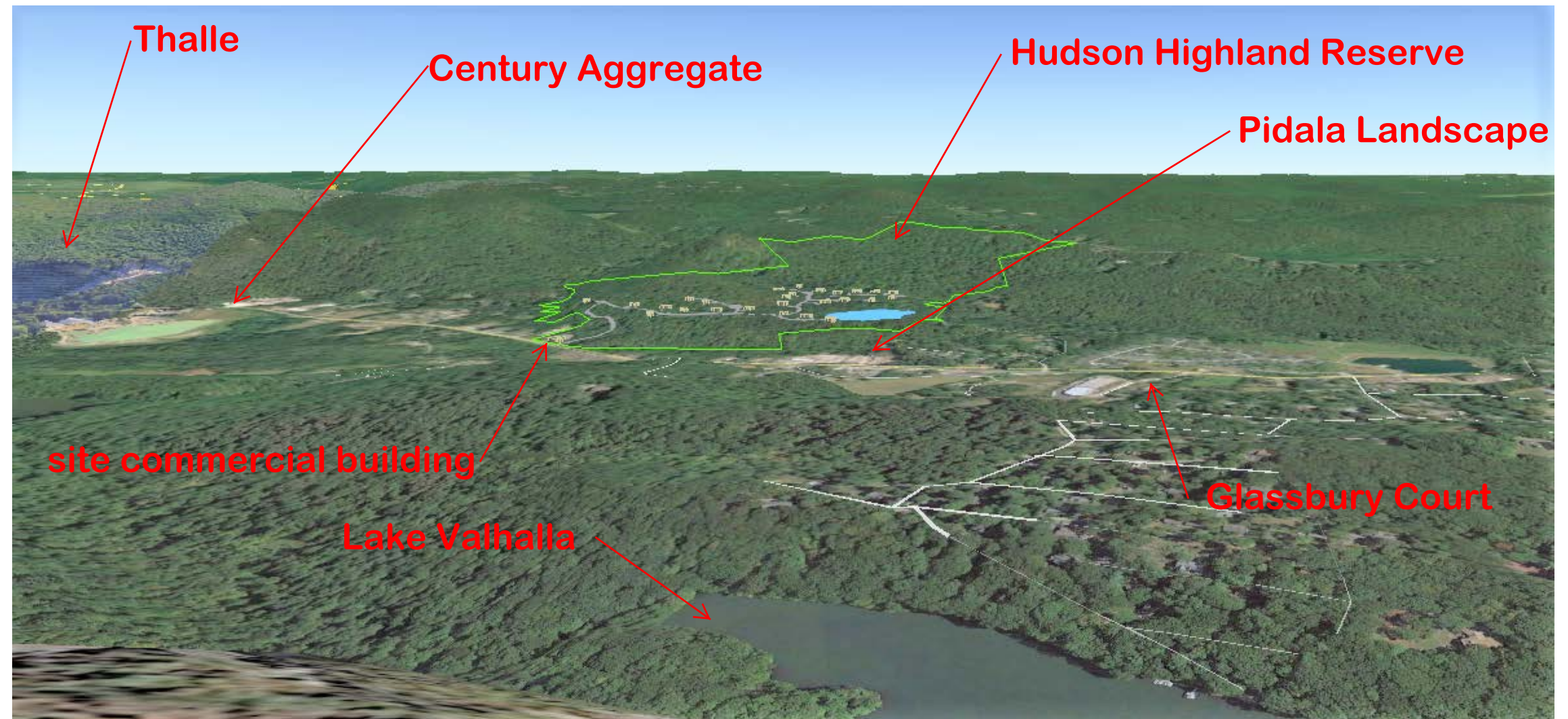
- HHR's existing two houses, existing barn (3D)
- HHR property line
- Ulmar Pond in blue

These items were added to assist users' visualization. The existing vegetation appears at ground level and simulates bare earth. As shown on the previous page, these items are not visible from Scofield Ridge because of the surrounding forest.

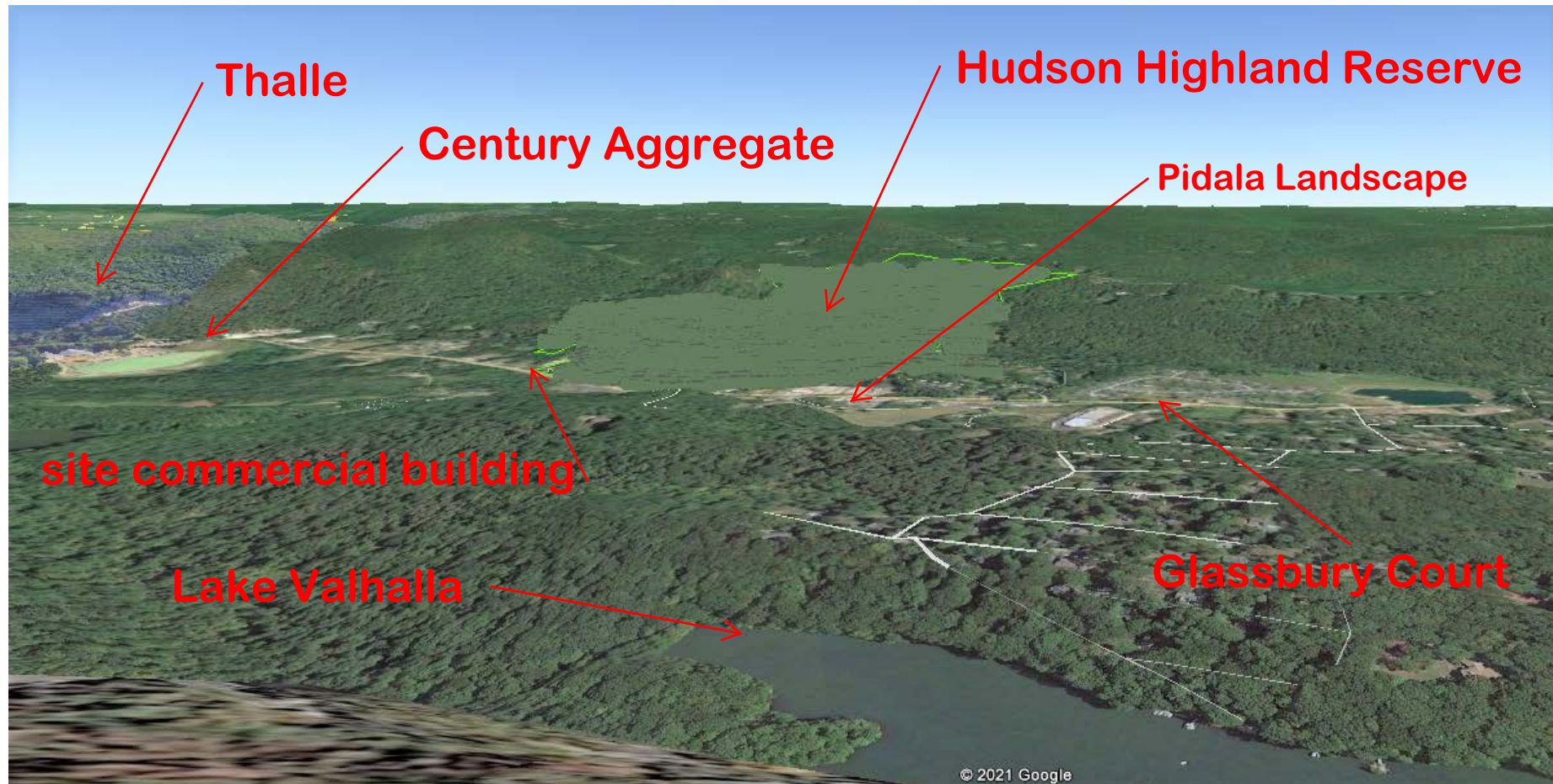
Google Earth screenshot from "HHR camera point S"  
 Added to the screenshot:

- HHR's existing two houses and barn (3D)
- HHR property line
- Ulmar Pond in blue
- HHR's features, proposed roads, houses (3D), and driveways

These items were added to assist users' visualization. The existing vegetation appears at ground level and simulates bare earth. As shown on the previous page, these items are not visible from Scofield Ridge because of the surrounding forest.







Google Earth screenshot from "HHR camera point S"  
 Added to the screenshot:

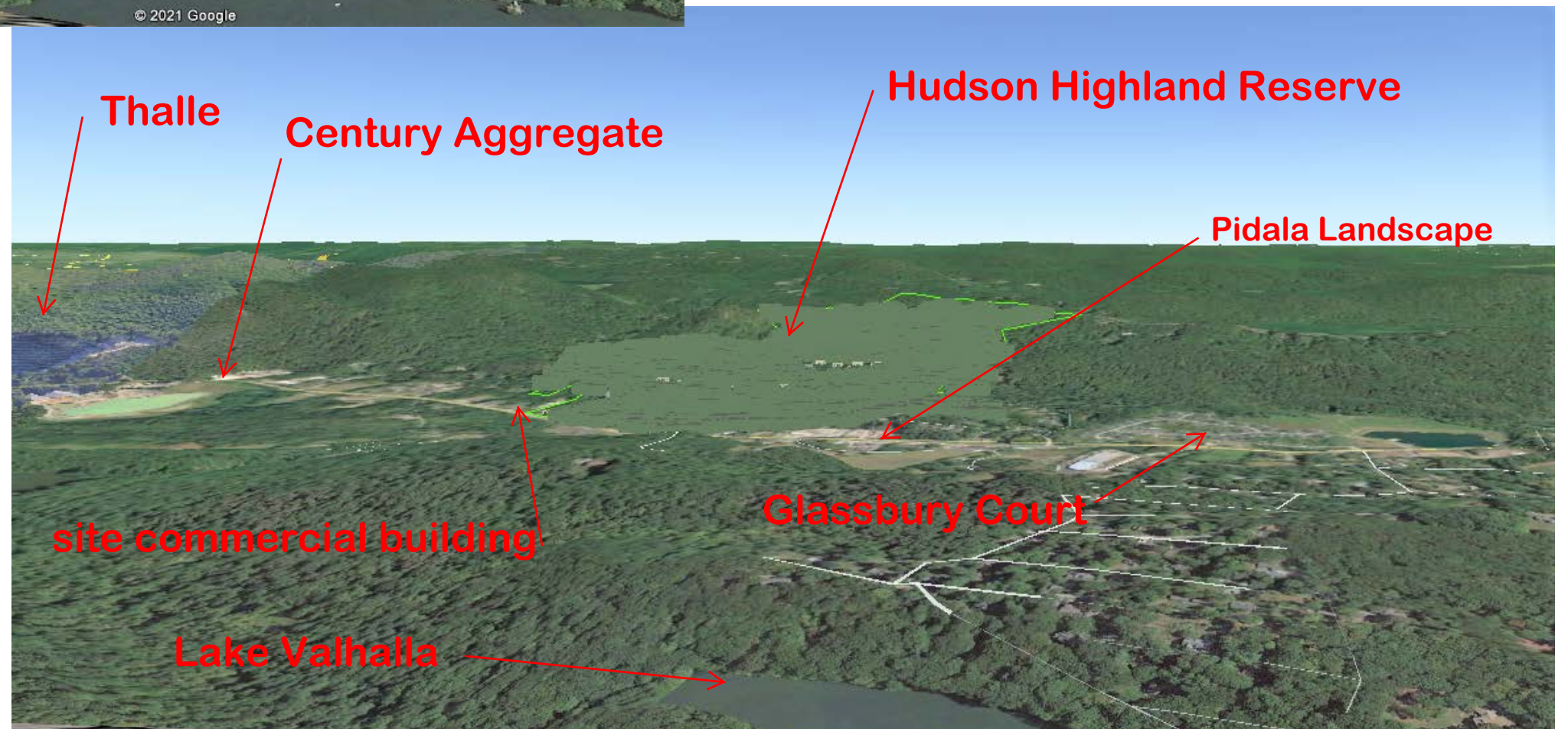
- HHR's existing two houses and barn (3D)
- HHR property line
- Ulmar Pond in blue
- HHR's features, proposed roads, houses (3D), and driveways
- AND EXISTING TREES in 3D depicting tree top level

When the existing tree cover, as shown on this image, is added, the features visible on the previous page are concealed.

Google Earth screenshot from "HHR camera point S"  
 Added to the screenshot:

- HHR's existing two houses, existing barn (3D)
- HHR property line
- Ulmar Pond in blue
- HHR features, proposed roads, 0houses (3D), and driveways

**TREES REMOVED FROM AREAS OF DISTURBANCE**



When 3D trees are eliminated from within the limit of disturbance, it becomes apparent that the entry road will be visible, as will parts of the houses on lots 3 & 5, Lot 23 and Lots 15 thru 18. Visibility along the entry road can be mitigated with the installation of street trees. Visibility in the vicinity of Lots is relatively minor and not dissimilar to other developed areas that dapple the hillside.