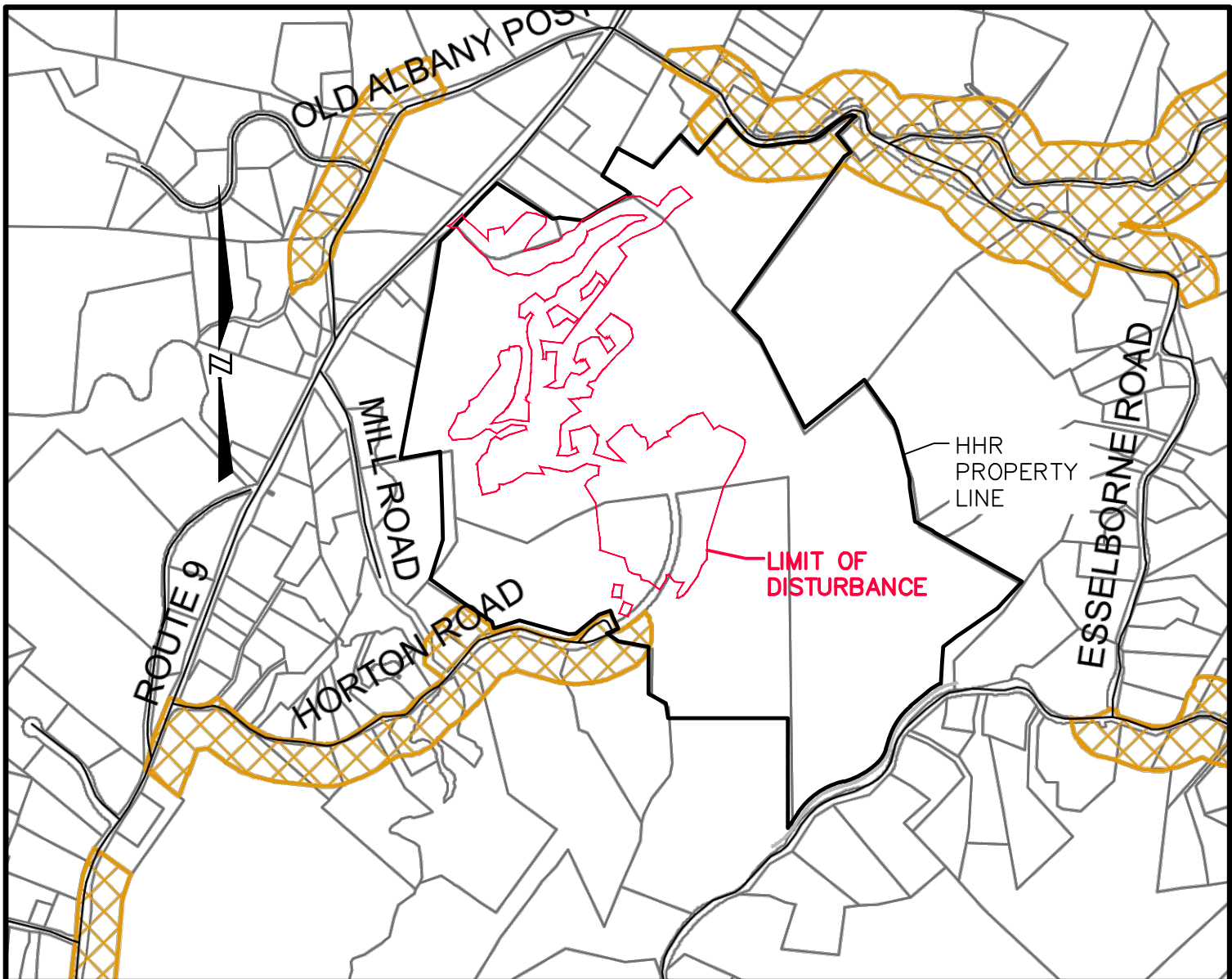


**APPENDIX C**  
REVISED DEIS FIGURES

This Page Intentionally Left Blank



*Scenic Protection Overlay (SPO)*

OVERLAY DISTRICT SOURCE TOWN OF PHILIPSTOWN RESOURCE PROTECTION OVERLAY DISTRICT ZONING MAP 2011

**PREPARED BY**

**BADEY & WATSON**  
Surveying & Engineering, P.C.

3063 Route 9 Cold Spring, NY 10516  
www.Badey-Watson.com

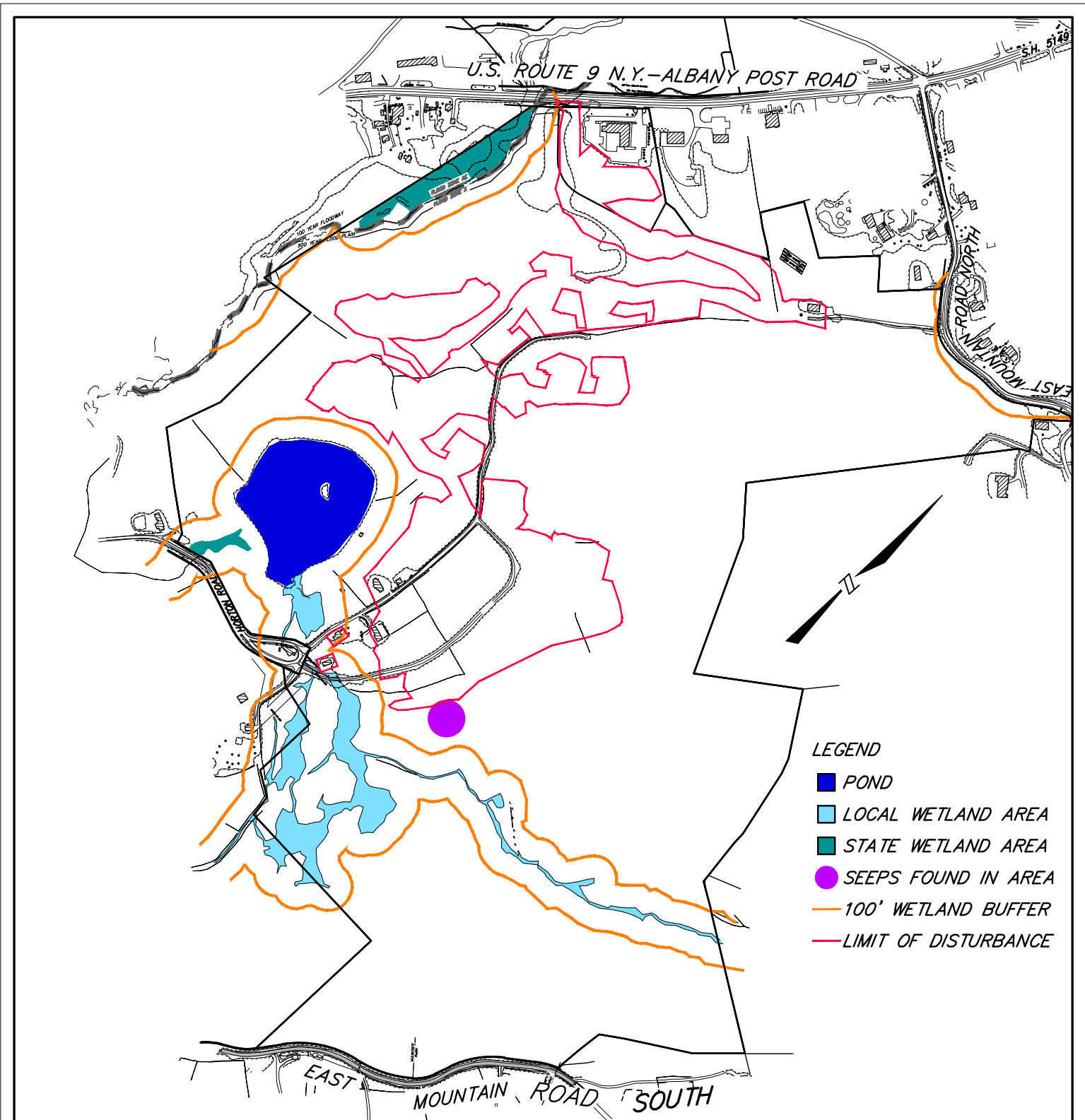
845.265.9217  
845.265.4428 (Fax)  
877. 3.141593 (Toll Free)

**SCENIC PROTECTION OVERLAY DISTRICT**  
 PREPARED FOR  
**ENVIRONMENTAL IMPACT STATEMENT**  
 FOR  
**HUDSON HIGHLANDS RESERVE**  
 SITUATE IN THE  
**TOWN OF PHILIPSTOWN**  
**PUTNAM COUNTY**  
 NEW YORK

NOT TO SCALE

MARCH 3, 2022

**DEIS FIGURE 09**



**LEGEND**

- POND
- LOCAL WETLAND AREA
- STATE WETLAND AREA
- SEEPS FOUND IN AREA
- 100' WETLAND BUFFER
- LIMIT OF DISTURBANCE

PREPARED BY



3063 Route 9  
Cold Spring, NY 10516  
www.Badey-Watson.com

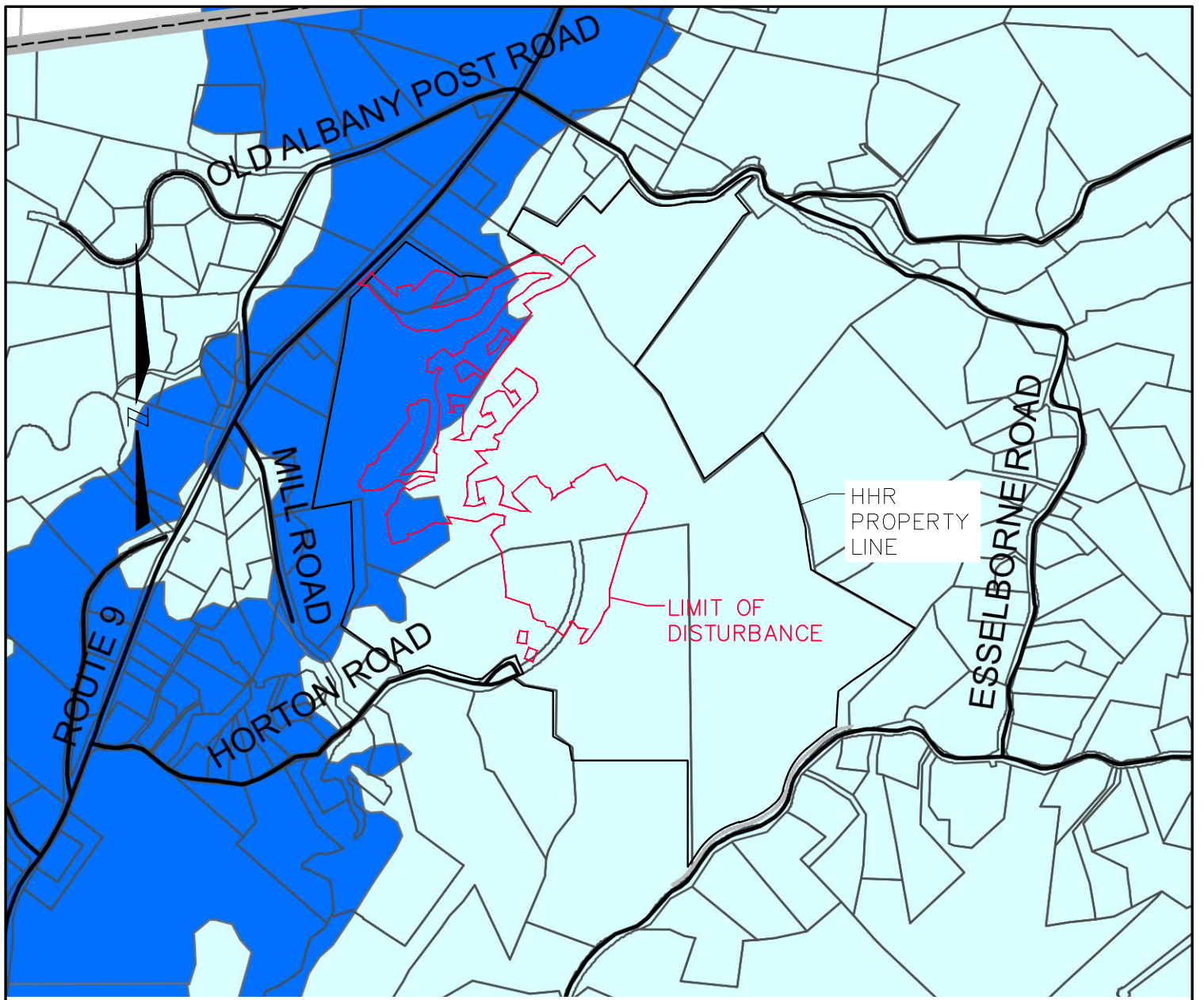
845.265.9217  
845.265.4428 (Fax)  
877.3.141593 (Toll Free)

WETLANDS AND SEEPS  
PREPARED FOR  
ENVIRONMENTAL IMPACT STATEMENT  
FOR  
**HUDSON HIGHLANDS RESERVE**  
SITUATE IN THE  
TOWN OF PHILIPSTOWN  
PUTNAM COUNTY  
NEW YORK

NOT TO SCALE

MARCH 3, 2022

DEIS FIGURE 19



- Clove Creek Aquifer (CCA)
- Regional Aquifer (RA)

OVERLAY DISTRICT SOURCE TOWN OF PHILIPSTOWN RESOURCE PROTECTION OVERLAY DISTRICT ZONING MAP 2011

*COLD SPRING WATERSHED OVERLAY AND AQUIFER OVERLAY DISTRICT MAP*

*PREPARED FOR ENVIRONMENTAL IMPACT STATEMENT*

*FOR HUDSON HIGHLANDS RESERVE  
SITUATE IN THE TOWN OF PHILIPSTOWN  
PUTNAM COUNTY  
NEW YORK*

*NOT TO SCALE*

*MARCH 3, 2022*

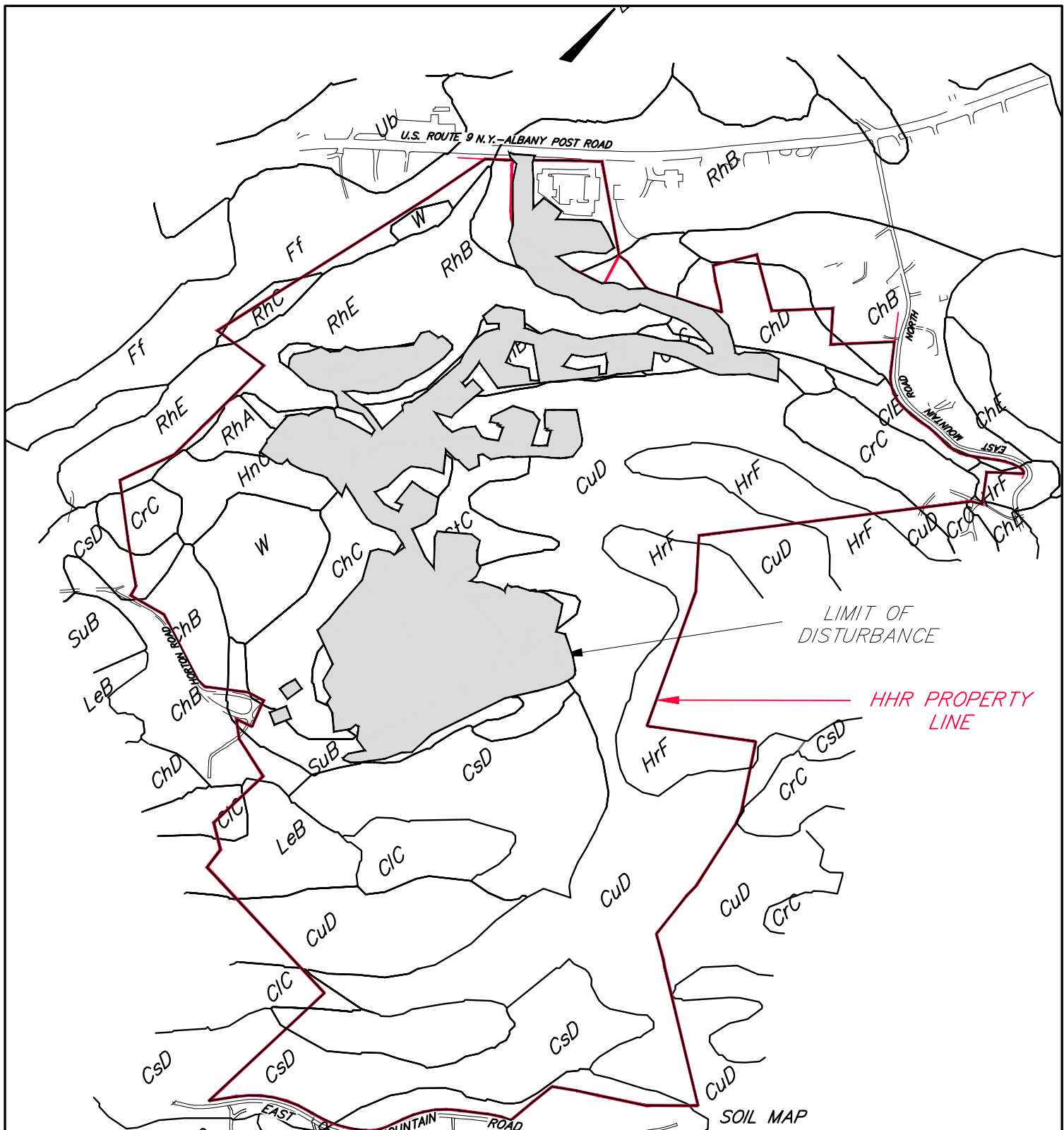
*PREPARED BY*

**BADEY & WATSON**  
Surveying & Engineering, P.C.

3063 Route 9  
Cold Spring, NY 10516  
www.Badey-Watson.com

845.265.9217  
845.265.4428 (Fax)  
877.3.141593 (Toll Free)

*DEIS FIGURE 20*



PREPARED BY

**BADEY & WATSON**  
Surveying & Engineering, P.C.

3063 Route 9  
Cold Spring, NY 10516  
www.Badey-Watson.com

845.265.9217  
845.265.4428 (Fax)  
877.3.141593 (Toll Free)

SOIL MAP  
PREPARED FOR  
ENVIRONMENTAL IMPACT STATEMENT  
FOR  
**HUDSON HIGHLANDS RESERVE**  
SITUATE IN THE  
**TOWN OF PHILIPSTOWN**  
**PUTNAM COUNTY**  
NEW YORK

NOT TO SCALE

MARCH 3, 2022

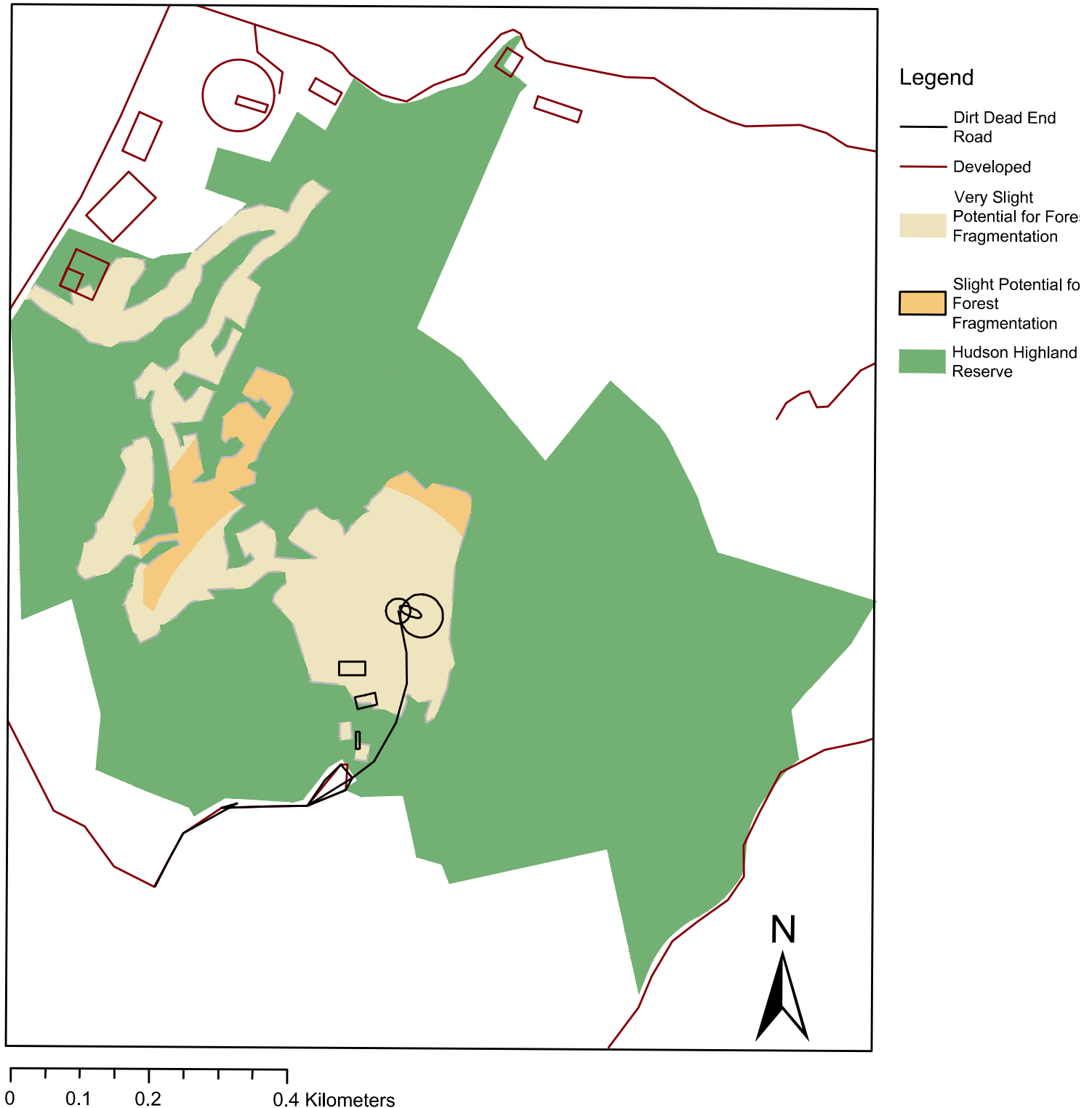
DEIS FIGURE 21



Figure 32: Forest Connectivity

# Hudson Highlands Reserve Forest Fragmentation Potential Figure 33

The colors indicate into which category of risk the sections of the potentially developed areas ("limit of disturbance") fall into.





Albany Post Rd N

OLD ALBANY POST RD

East Mountain

Lorsemens Trail

HHR PROPERTY LINE

LIMIT OF DISTURBANCE

ROUTE 9

MILL ROAD

HORTON ROAD

ESSELBORNE ROAD

Clove Creek

Fahnestock

State Park buffer



Open Space Conservation Overlay District (OSO)

OVERLAY DISTRICT SOURCE TOWN OF PHILIPSTOWN RESOURCE PROTECTION OVERLAY DISTRICT ZONING MAP 2011

OPEN SPACE OVERLAY DISTRICT  
PREPARED FOR  
ENVIRONMENTAL IMPACT STATEMENT

FOR  
**HUDSON HIGHLANDS RESERVE**  
SITUATE IN THE  
**TOWN OF PHILIPSTOWN**  
**PUTNAM COUNTY**  
NEW YORK

NOT TO SCALE

MARCH 3, 2022

PREPARED BY



3063 Route 9  
Cold Spring, NY 10516  
www.Badey-Watson.com

845.265.9217  
845.265.4428 (Fax)  
877.3.141593 (Toll Free)

DEIS FIGURE 34

This Page Intentionally Left Blank