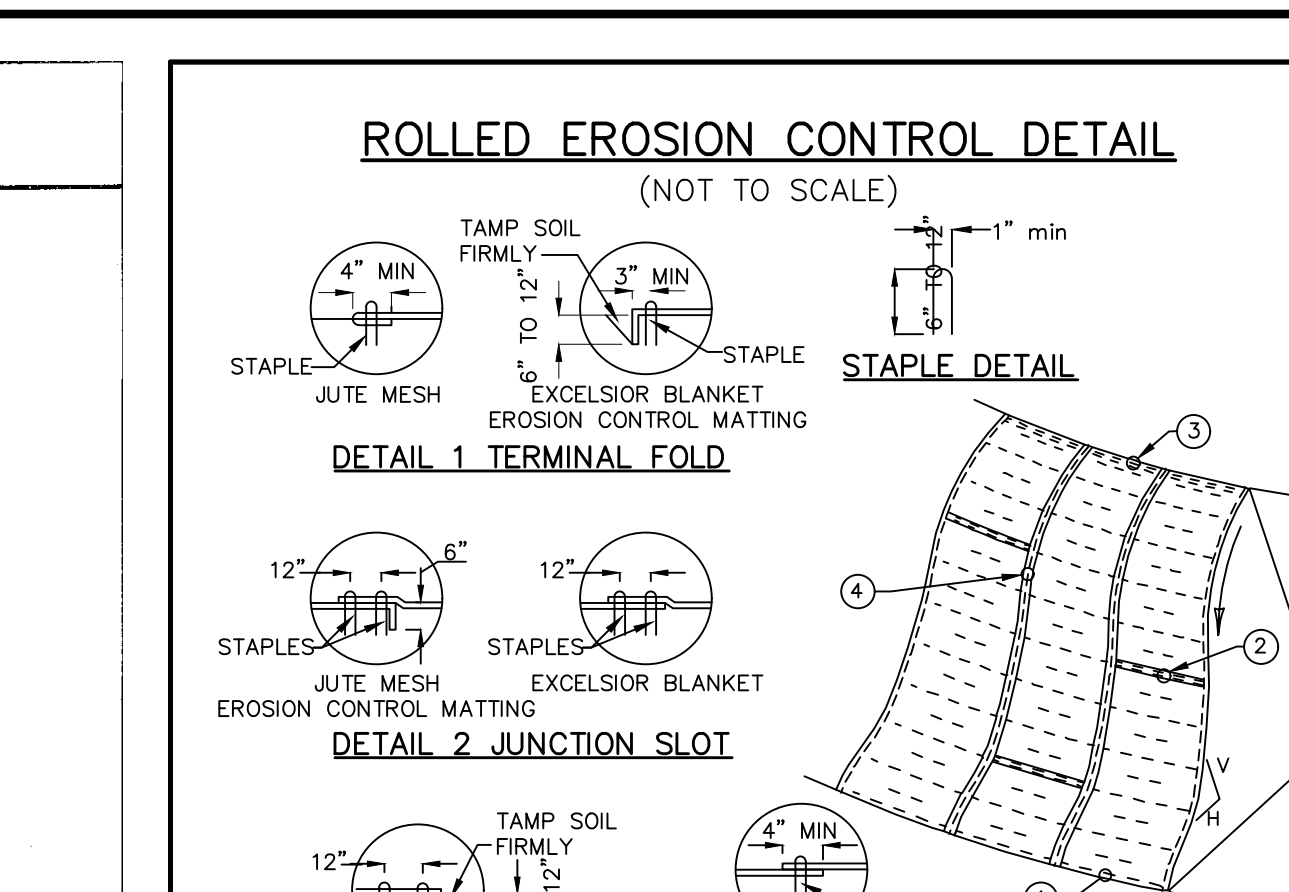
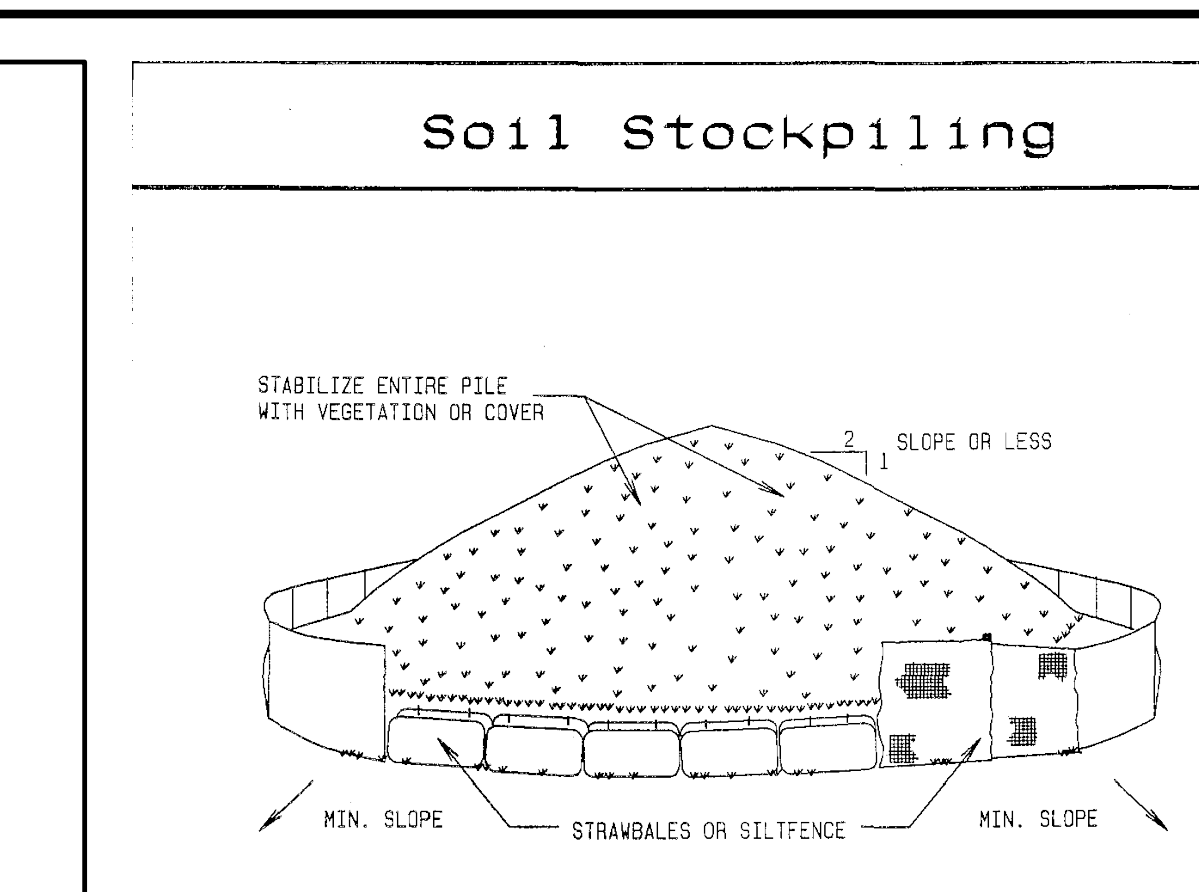
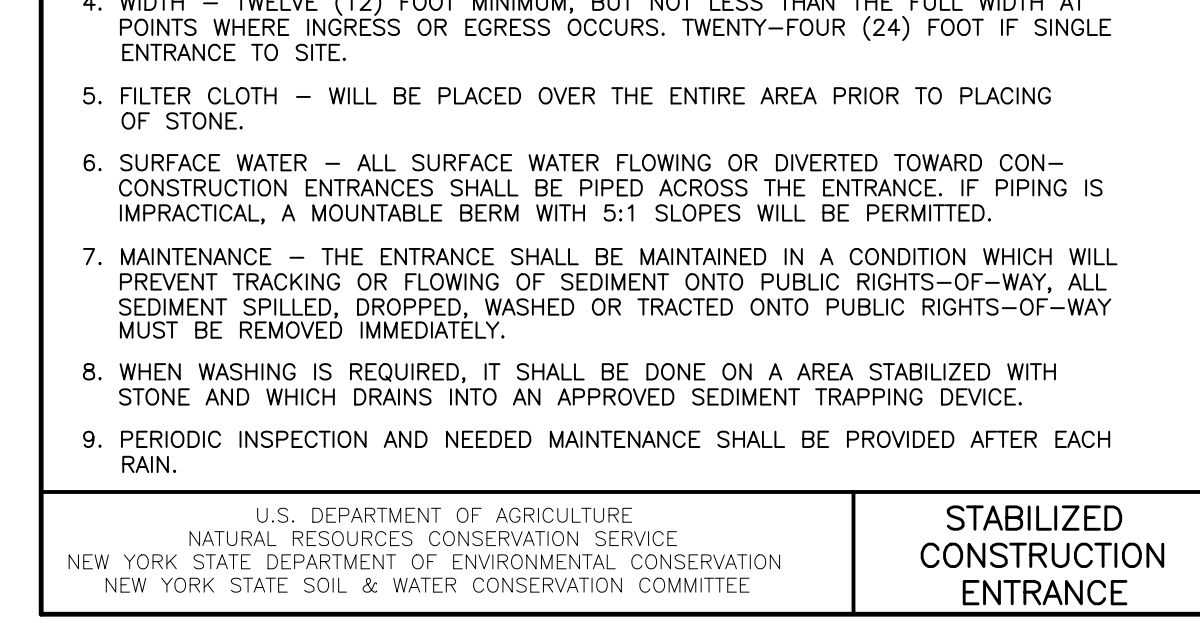
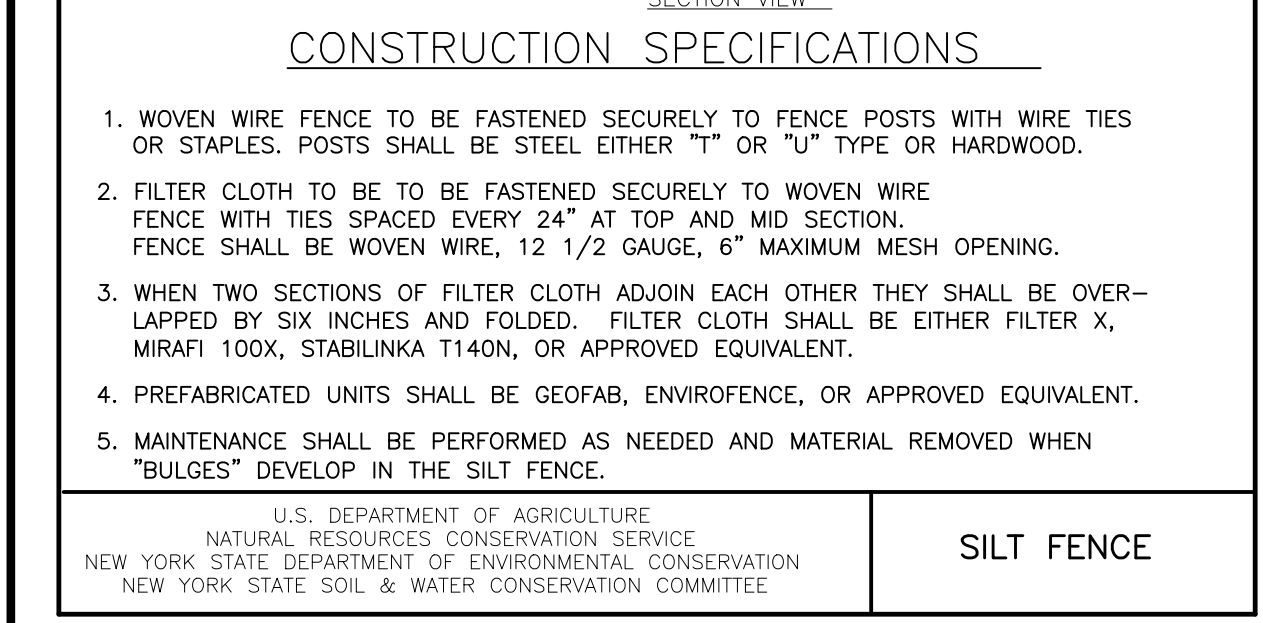
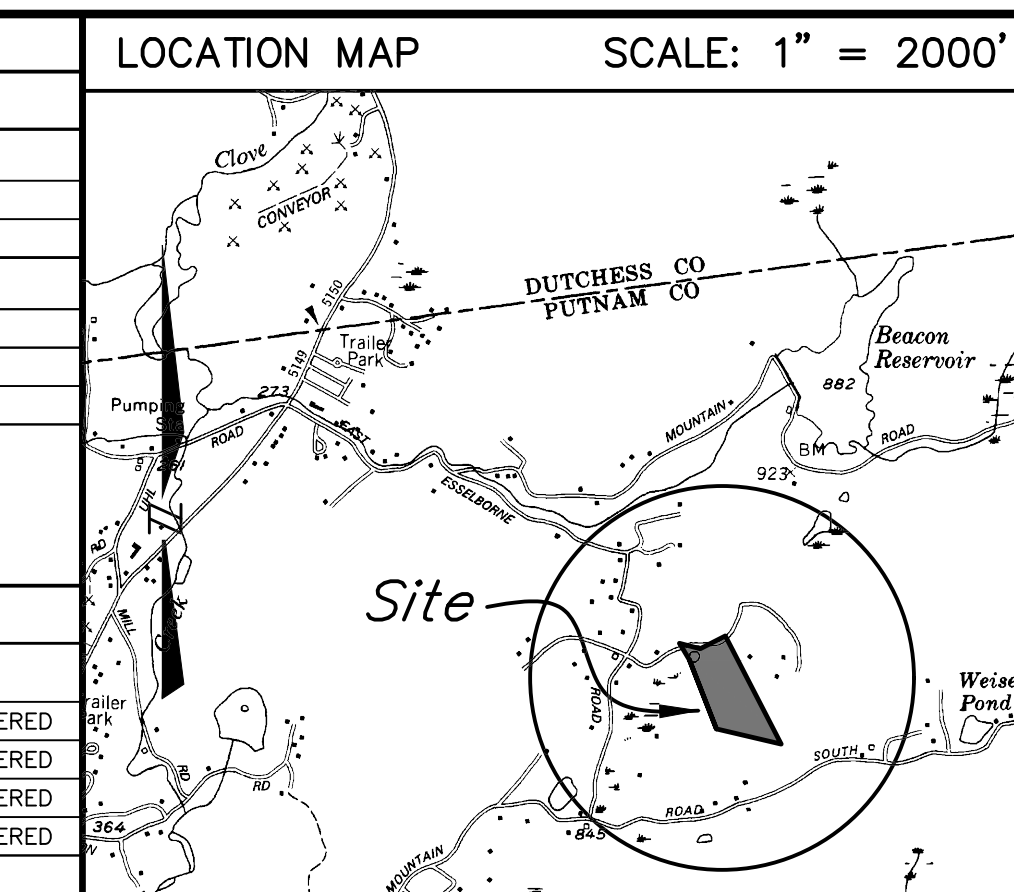


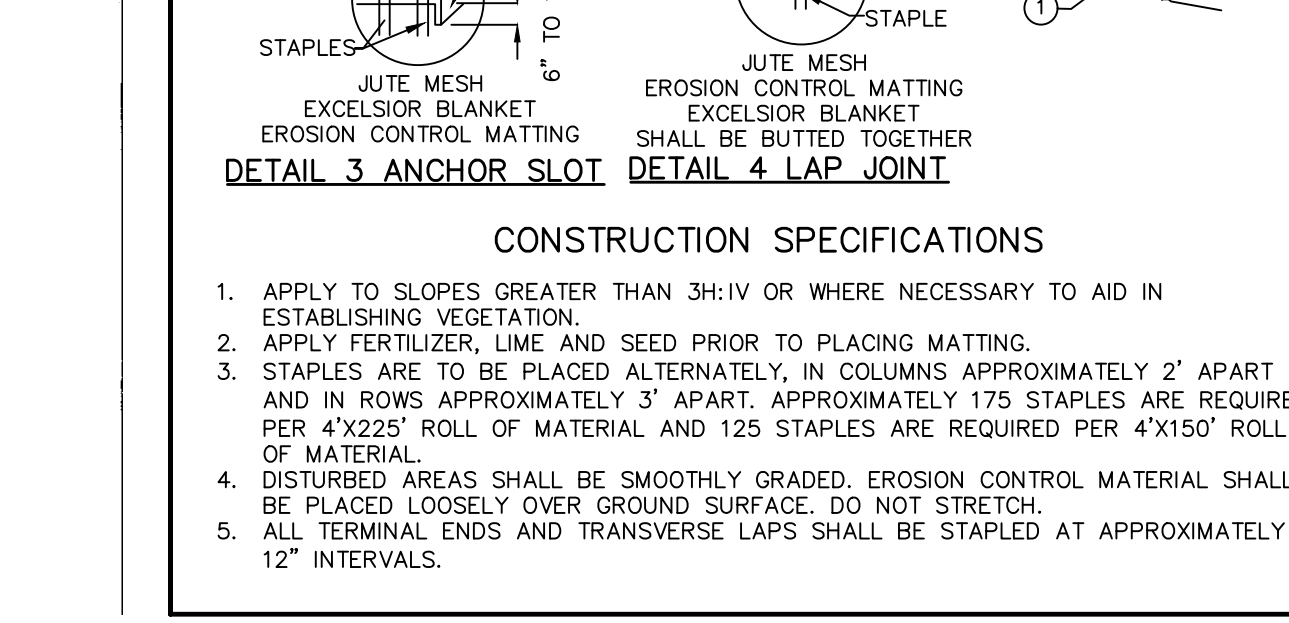
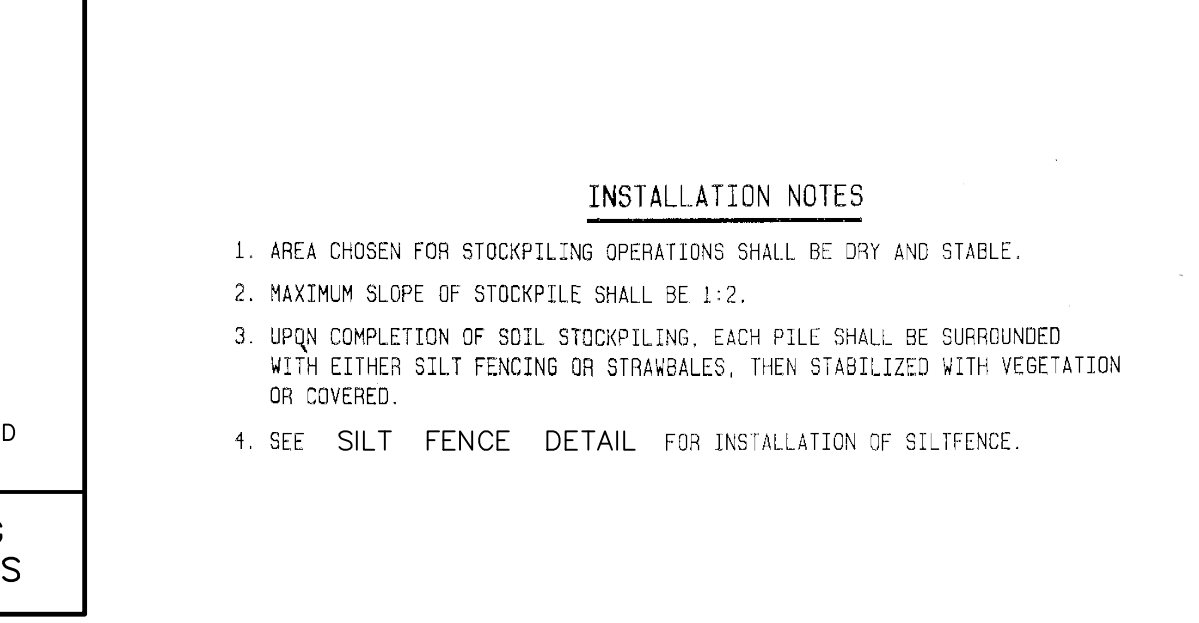
CONSTRUCTION SPECIFICATIONS
1. ALL GRADED OR DISTURBED AREAS INCLUDING SLOPES SHALL BE PROTECTED DURING CLEARING AND CONSTRUCTION IN ACCORDANCE WITH THE APPROVED SEDIMENT CONTROL PLAN UNTIL THEY ARE PERMANENTLY STABILIZED.



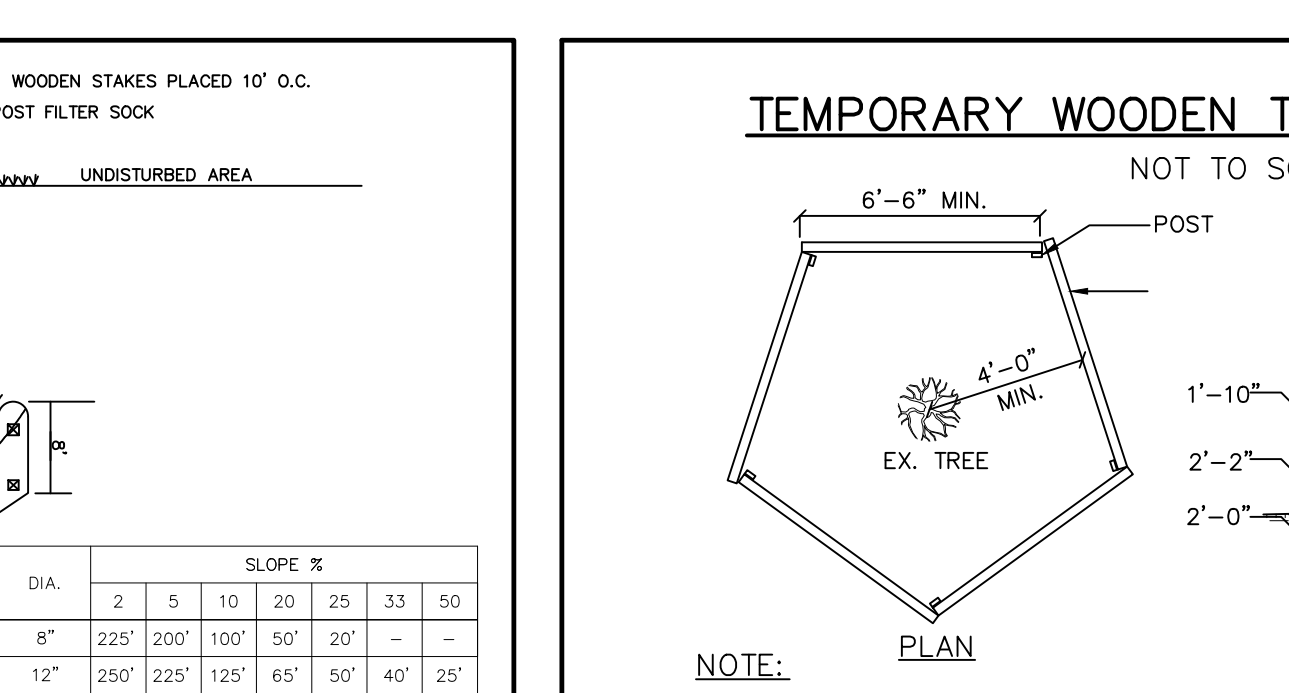
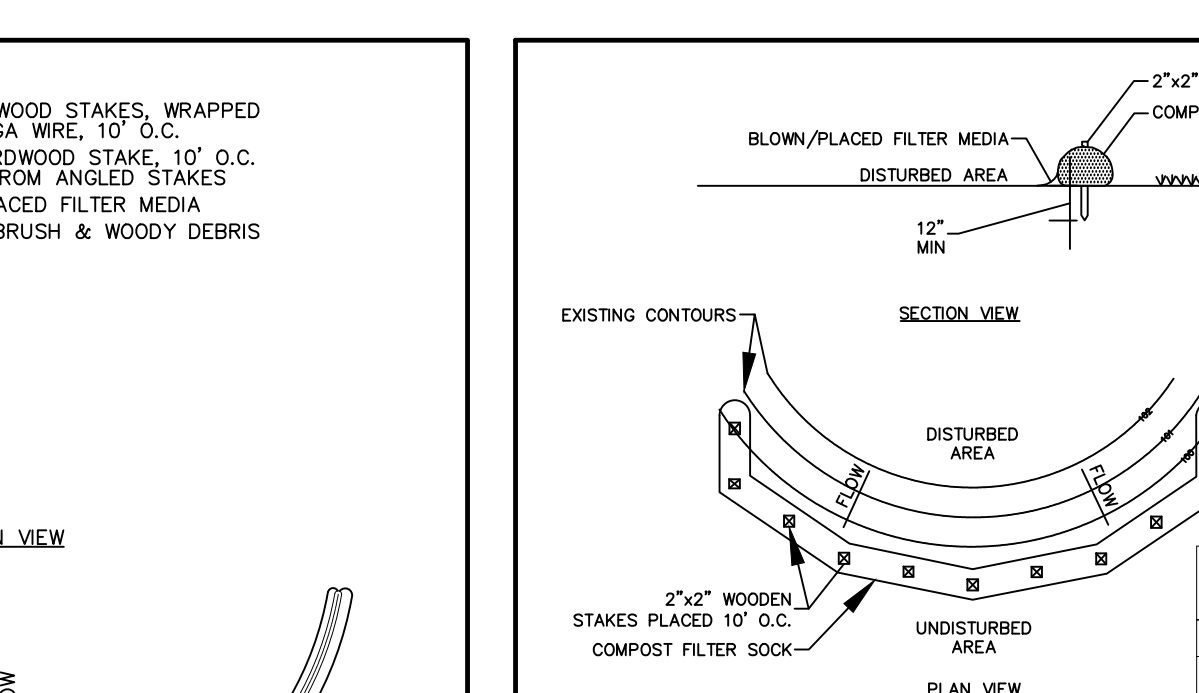
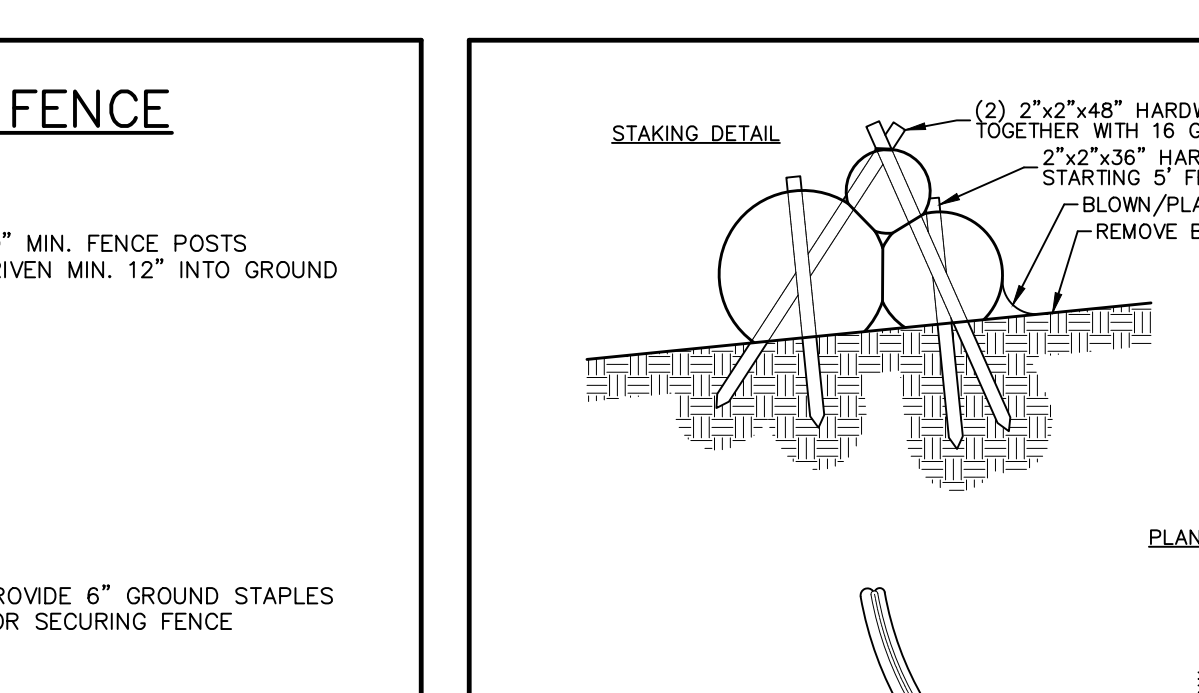
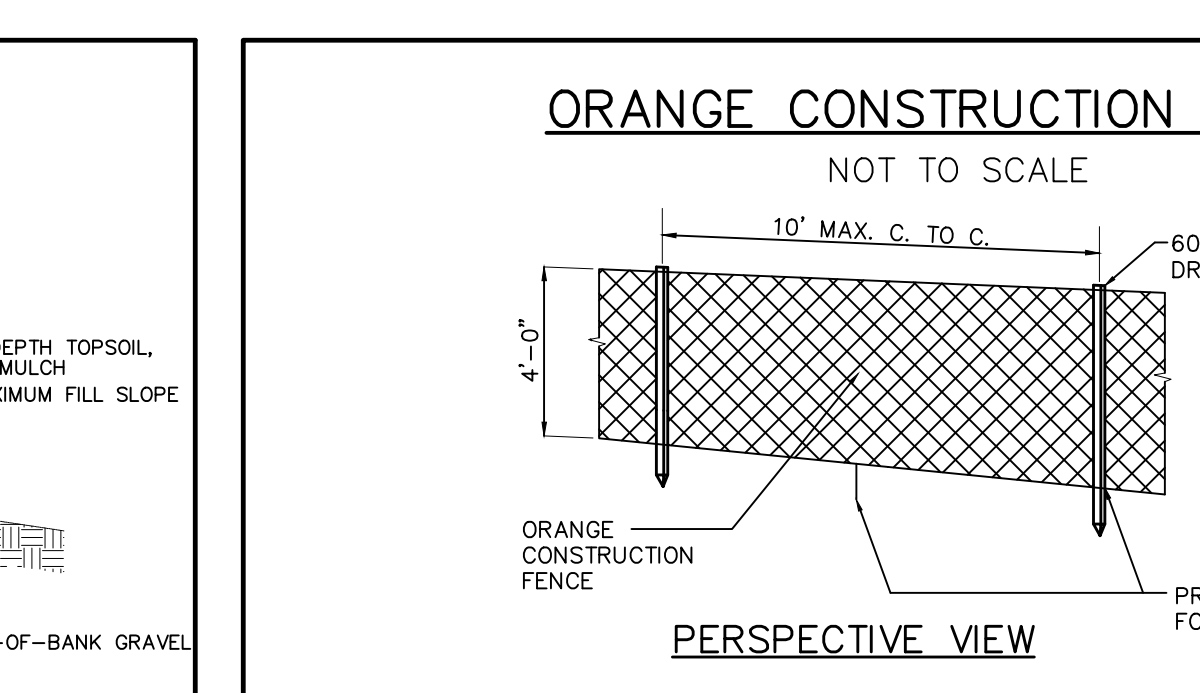
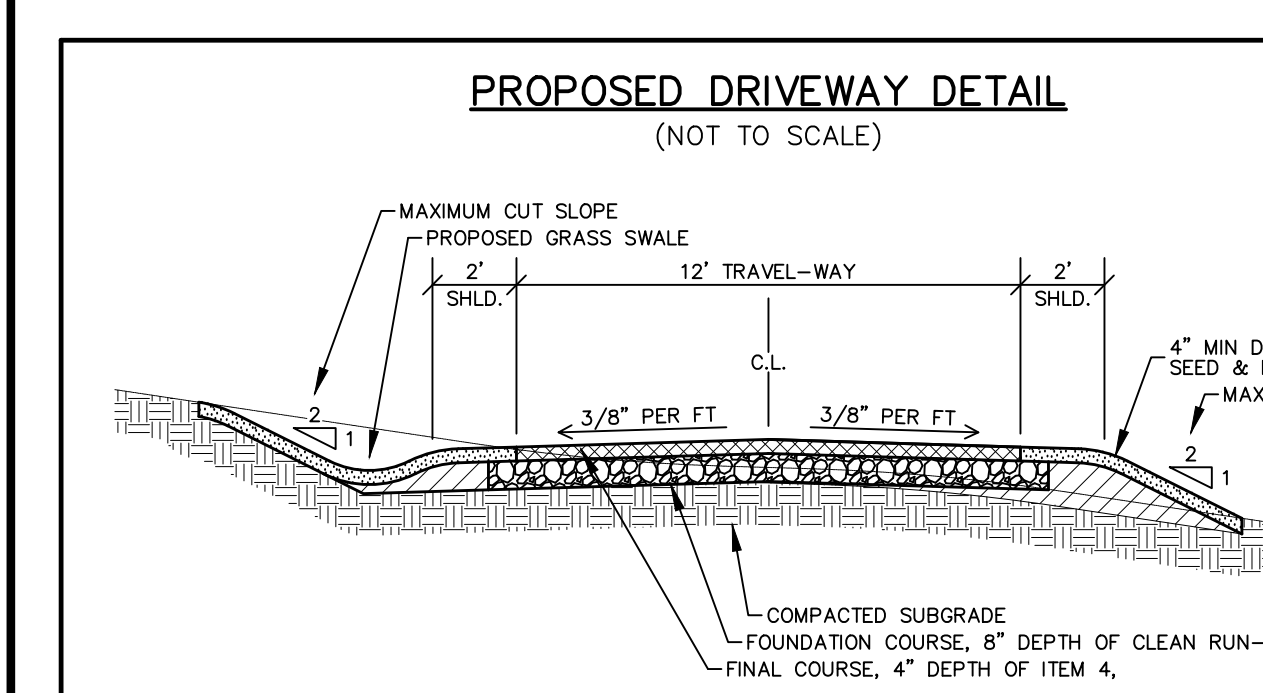
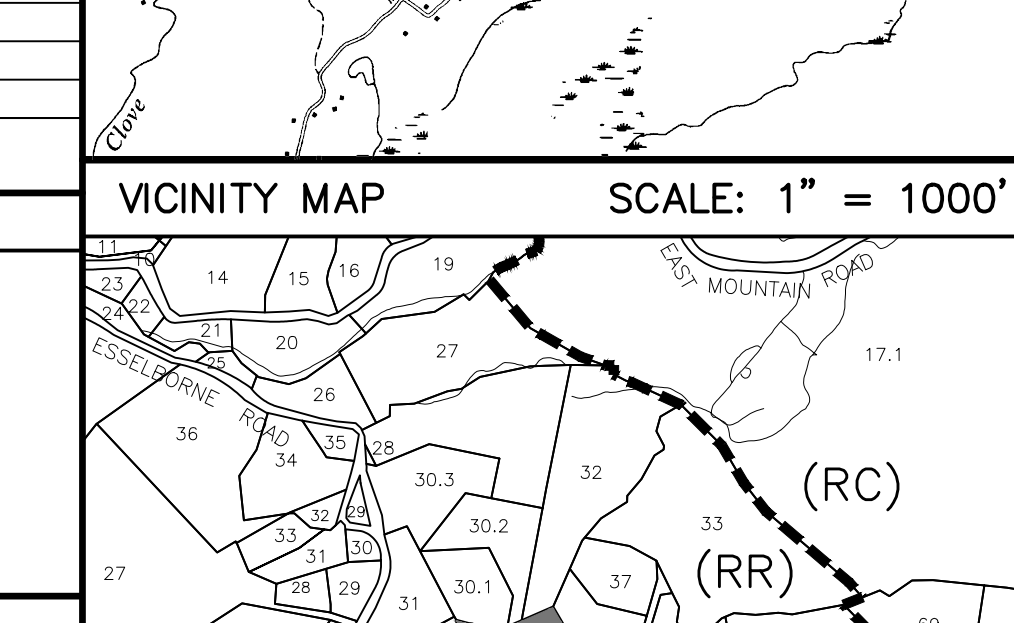
FIELD TEST RESULTS
DEEP TEST RESULTS
NO. 1 NO. 2 NO. 3 NO. 4
SOIL LAYER DESCRIPTION



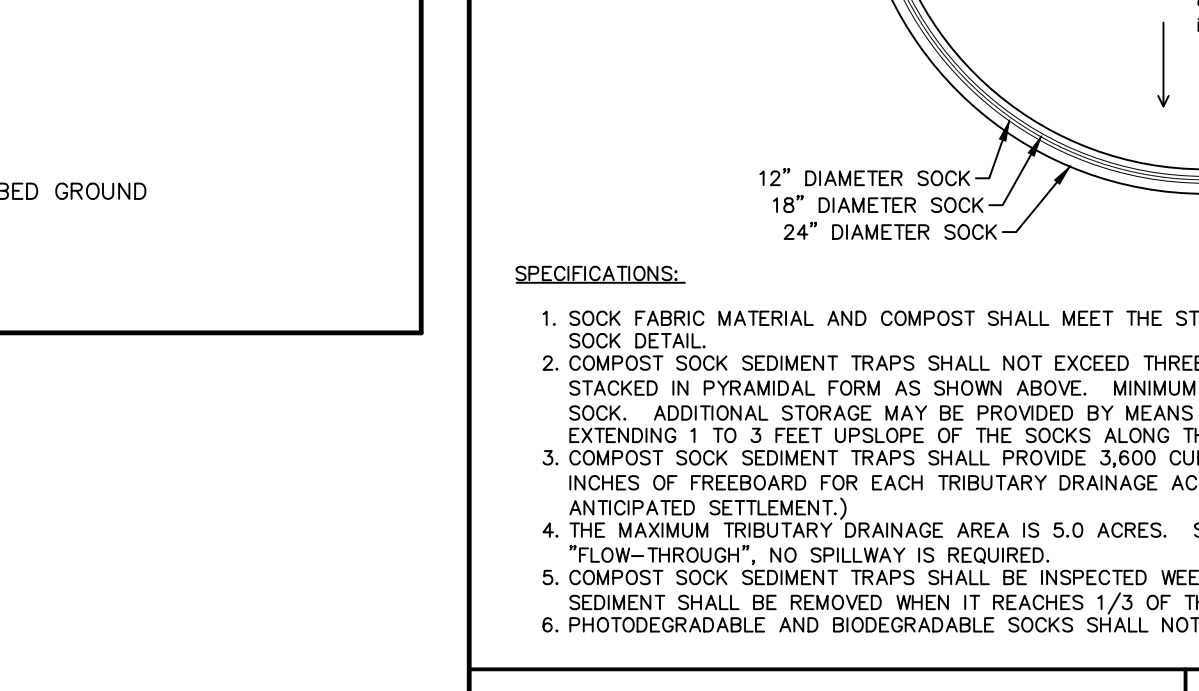
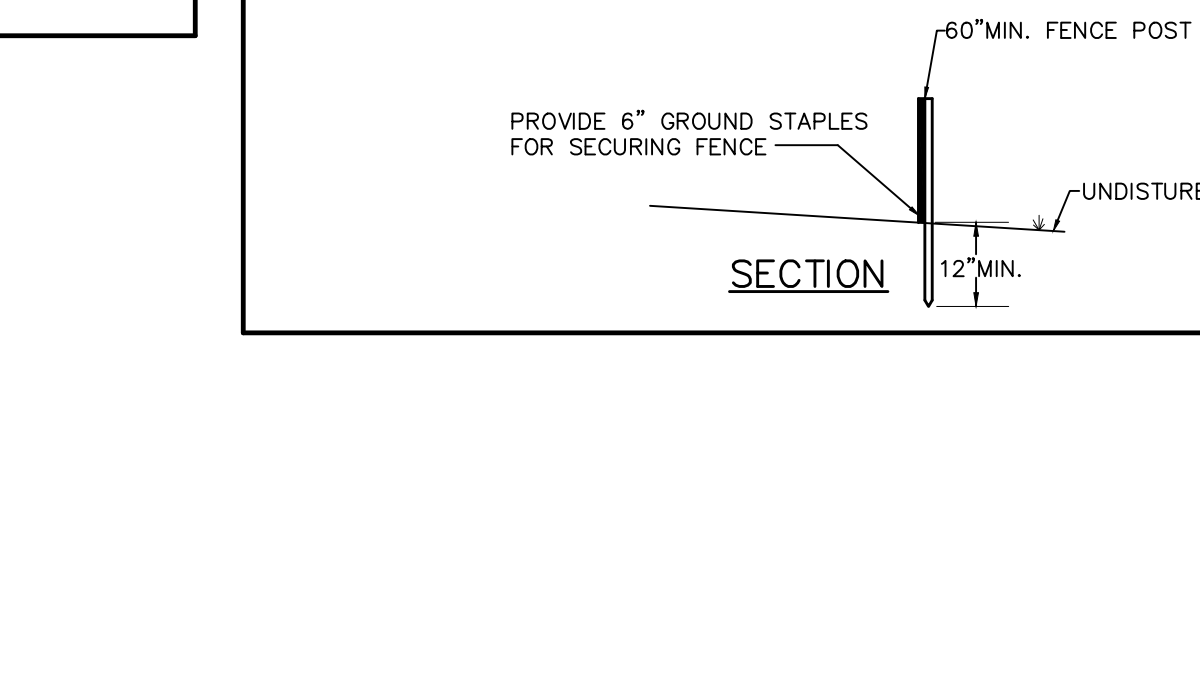
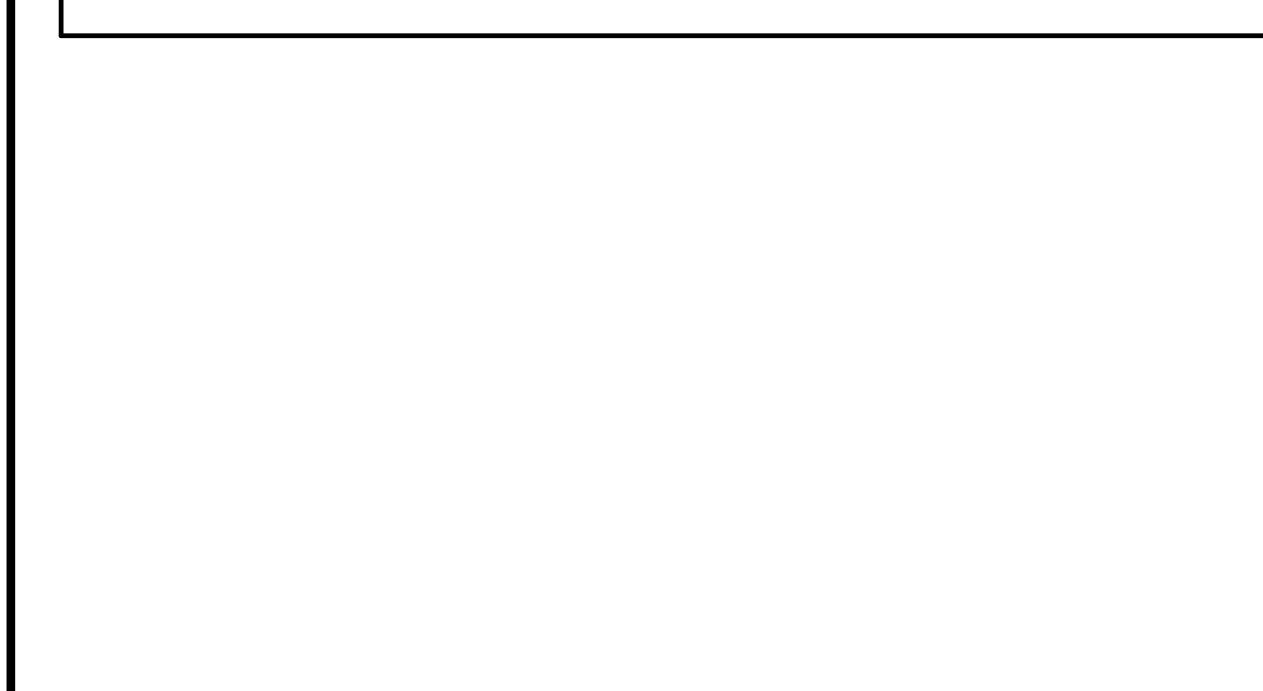
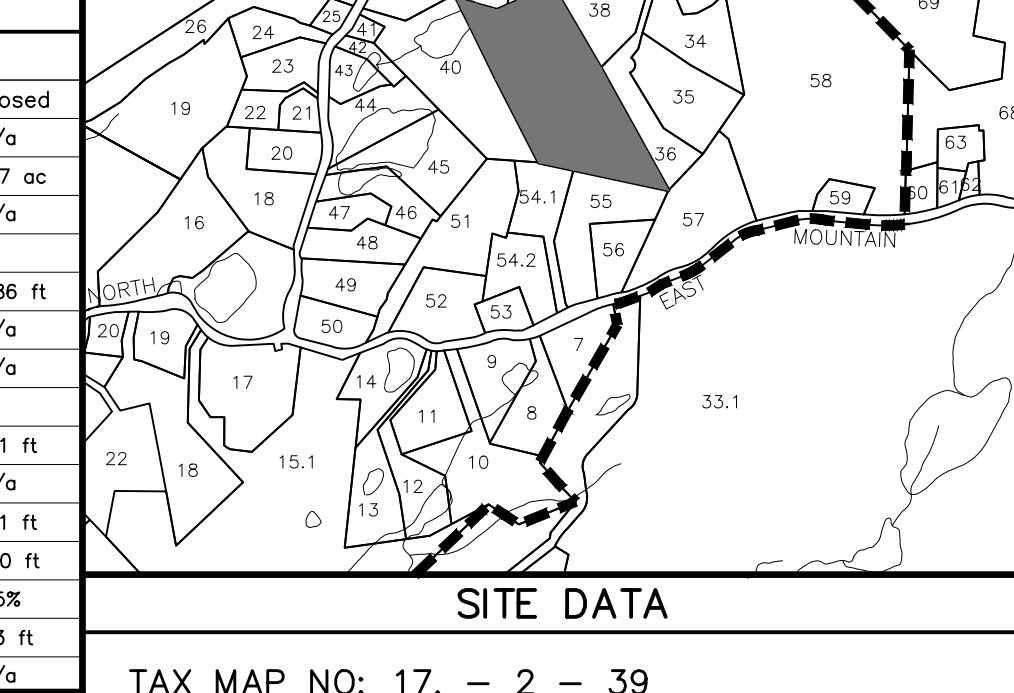
LANDGRADING SPECIFICATIONS
1. AREA CHOSEN FOR STOCKPILING OPERATIONS SHALL BE DRY AND STABLE.



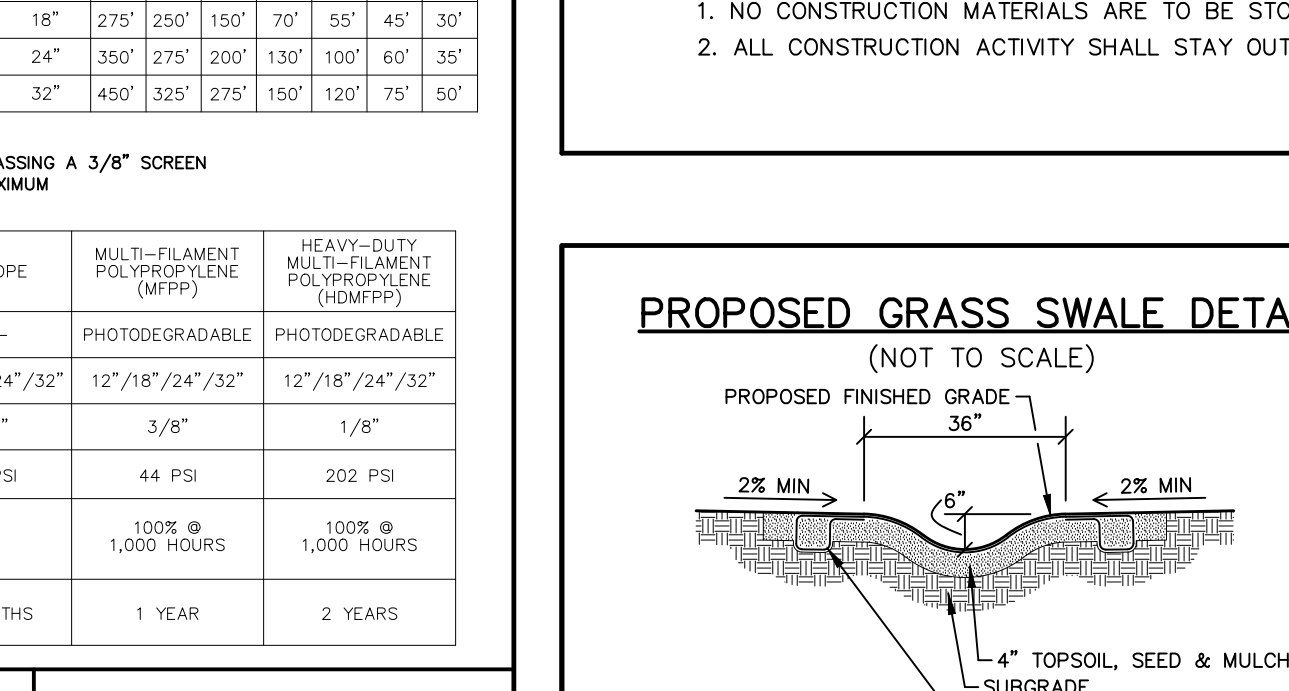
PERCOLATION TESTS
NO. DATE DEPTH RATE COMMENTS
A 08/10/16 28" 60 MIN/IN IN AREA NO LONGER CONSIDERED



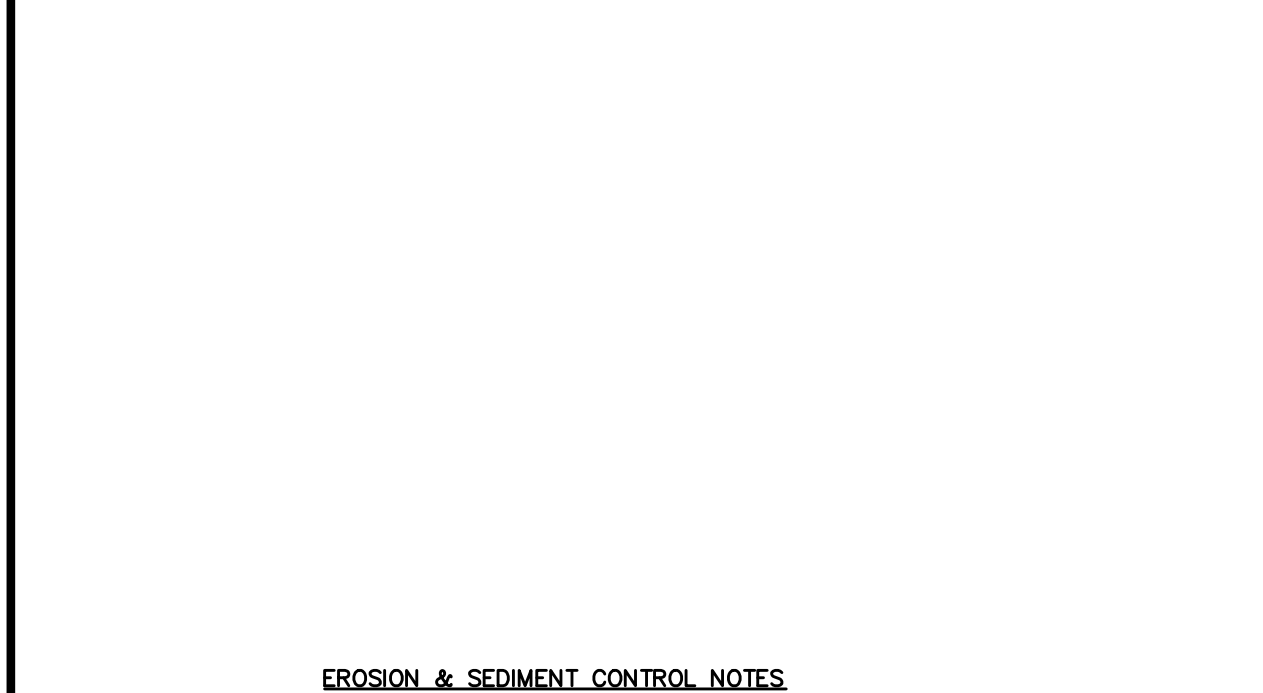
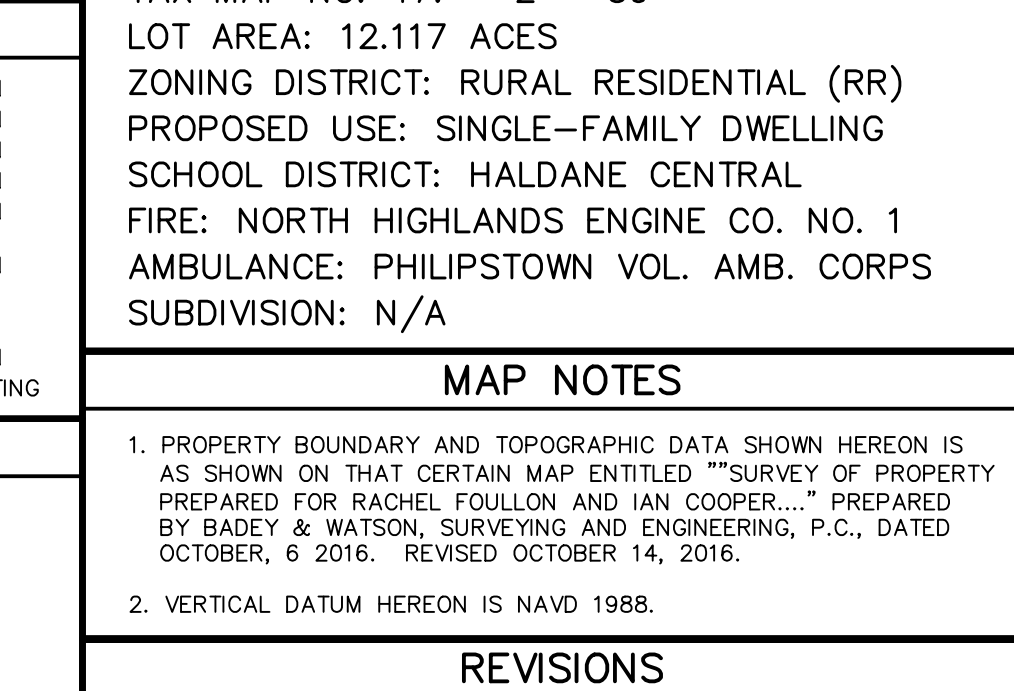
ZONING DATA
DISTRICT: RURAL RESIDENTIAL (RR)
Maximum density (convention) 3 ac/ha



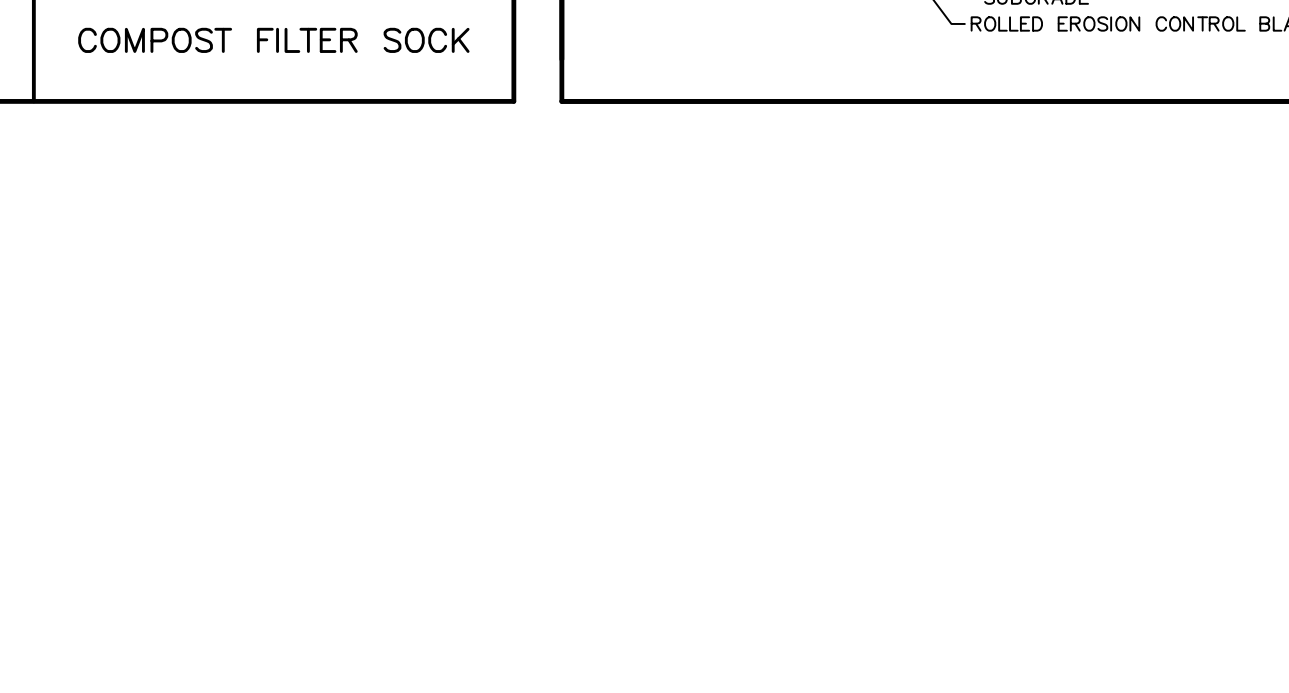
COMPOST FILTER SOCK
REQUIREMENTS
1. SOIL FABRIC MATERIAL AND COMPOST SHALL MEET THE STANDARDS LISTED IN THE COMPOST FILTER SOCK SPECIFICATIONS.



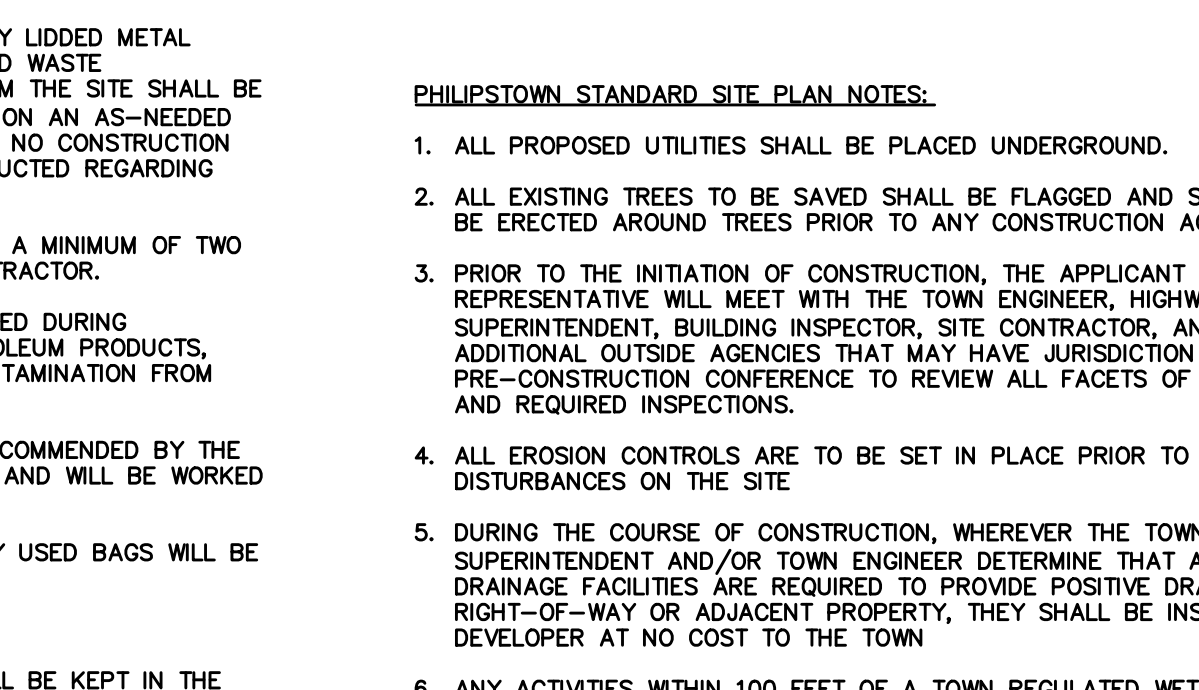
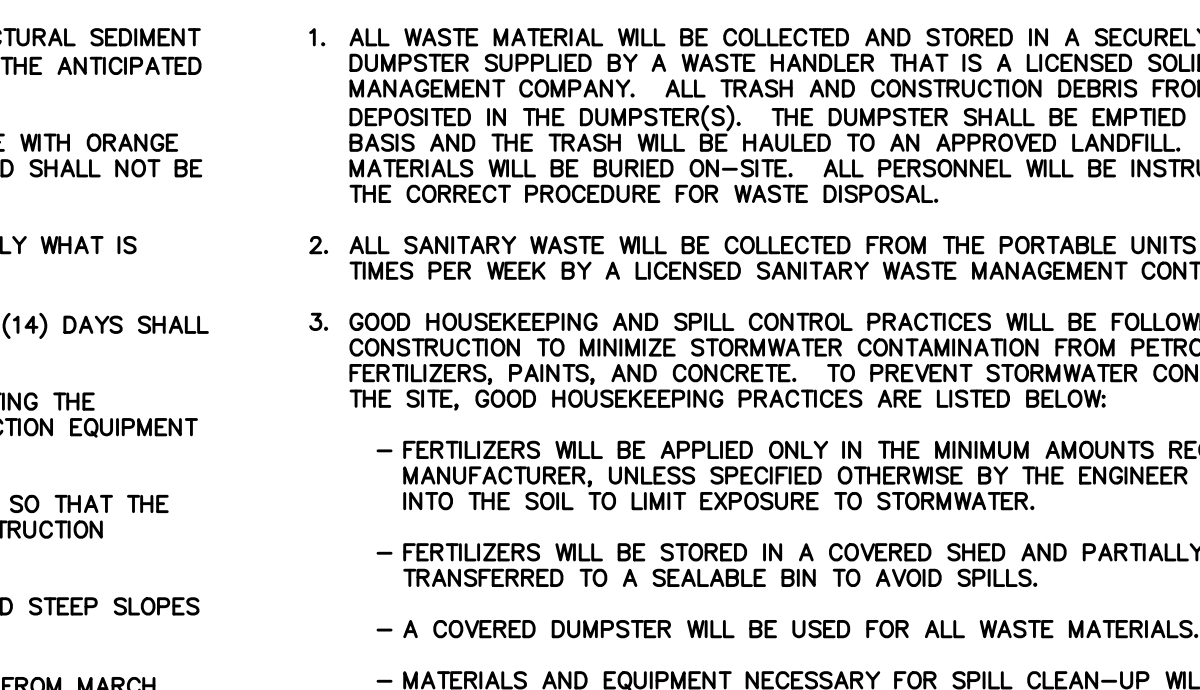
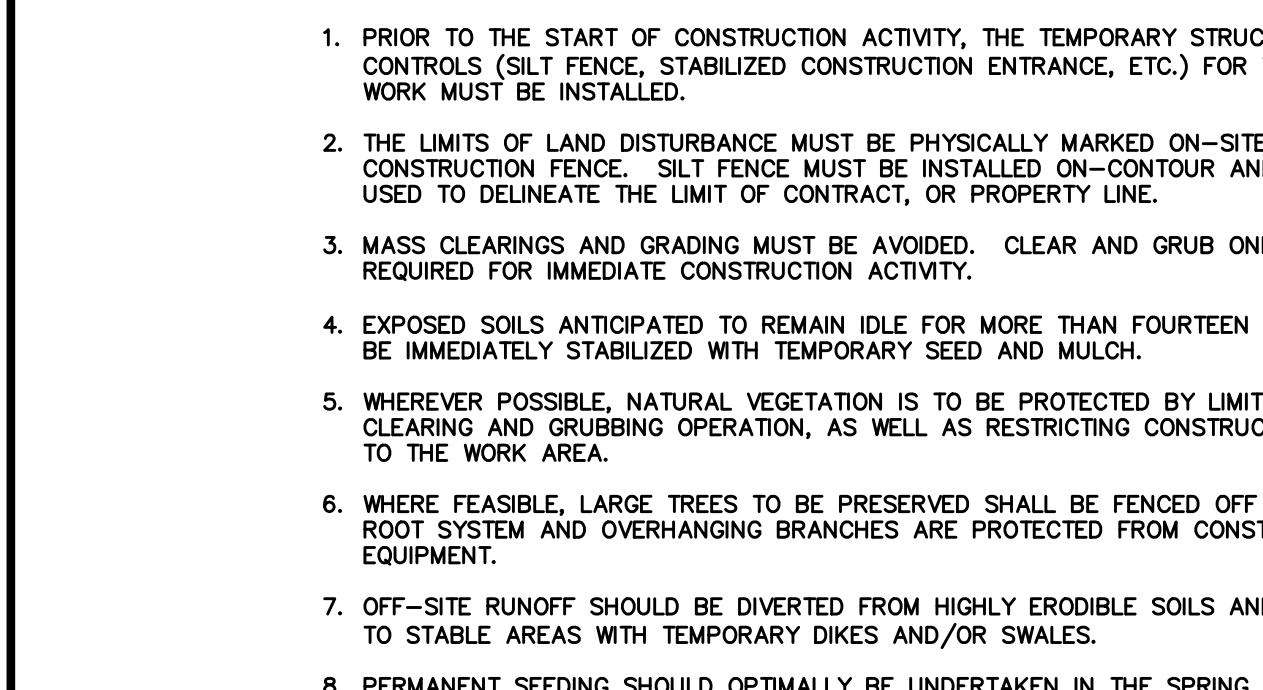
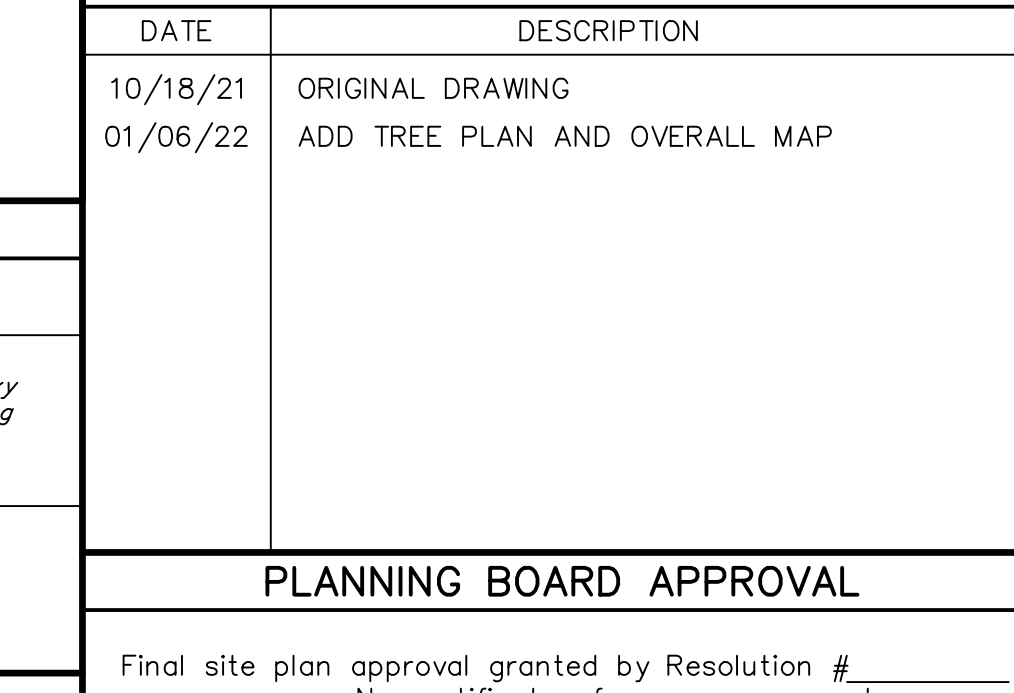
OVERLAY DISTRICTS
175-13 Floodplain Overlay District - NRP Map (FPO) - NOT WITHIN



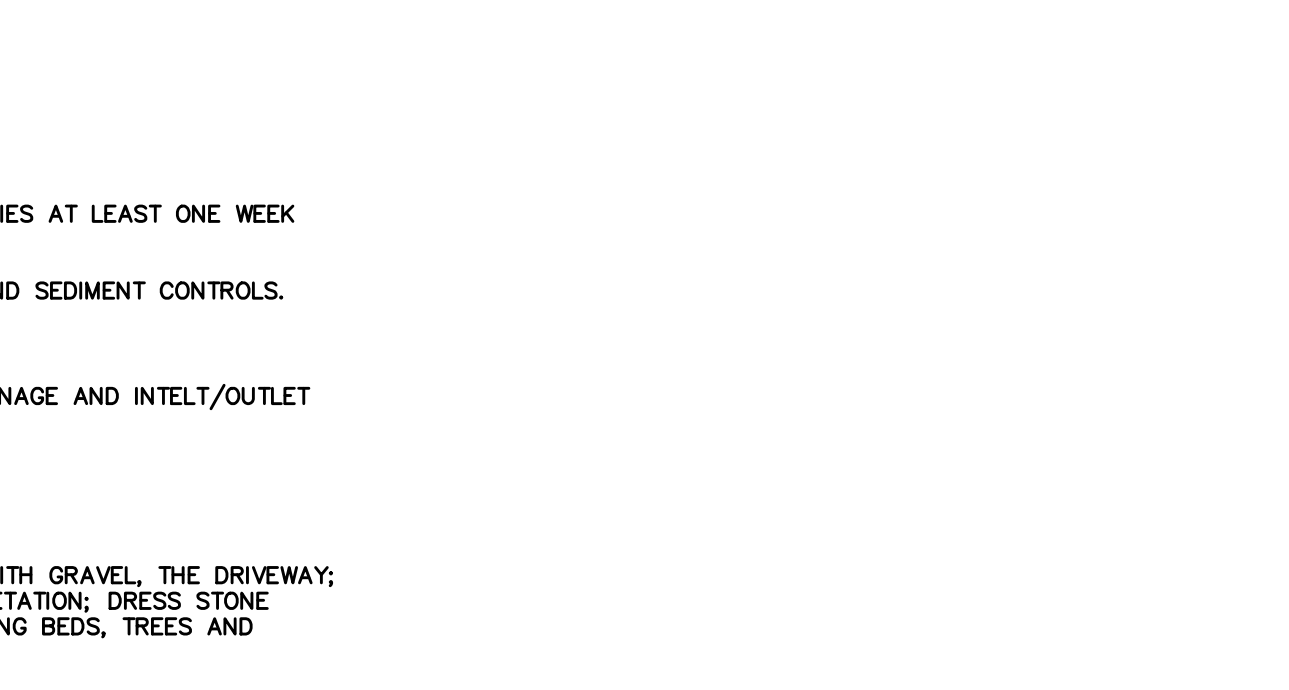
COMPOST FILTER SOCK
REQUIREMENTS
1. SOIL FABRIC MATERIAL AND COMPOST SHALL MEET THE STANDARDS LISTED IN THE COMPOST FILTER SOCK SPECIFICATIONS.



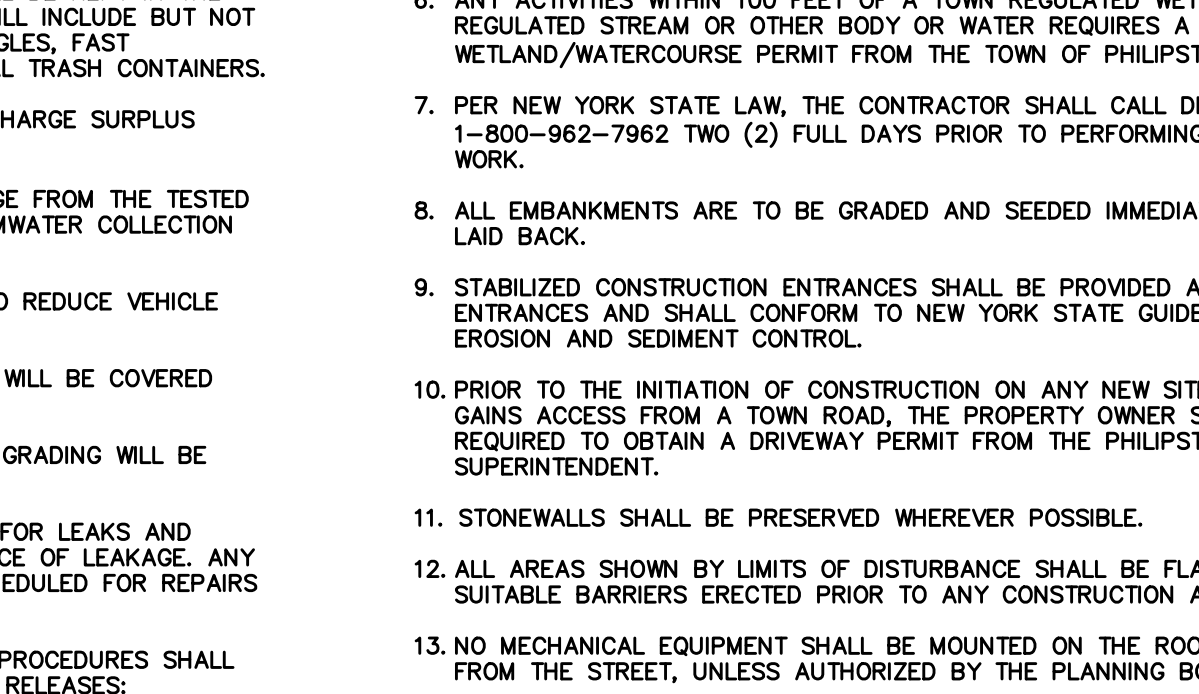
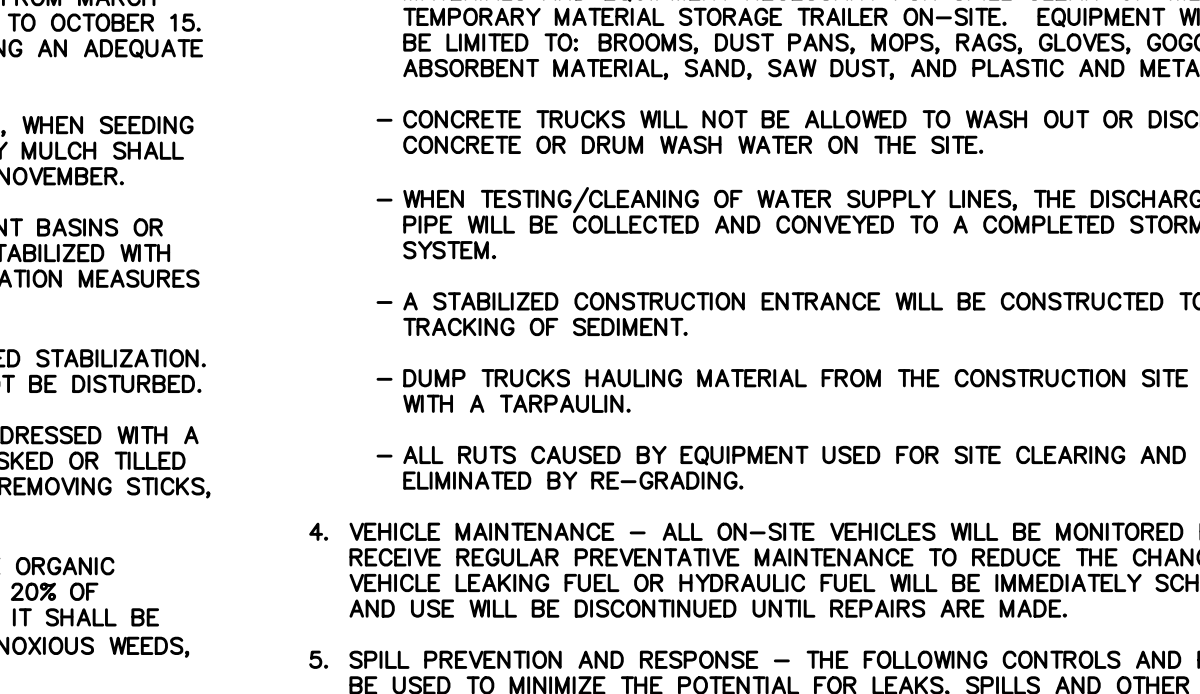
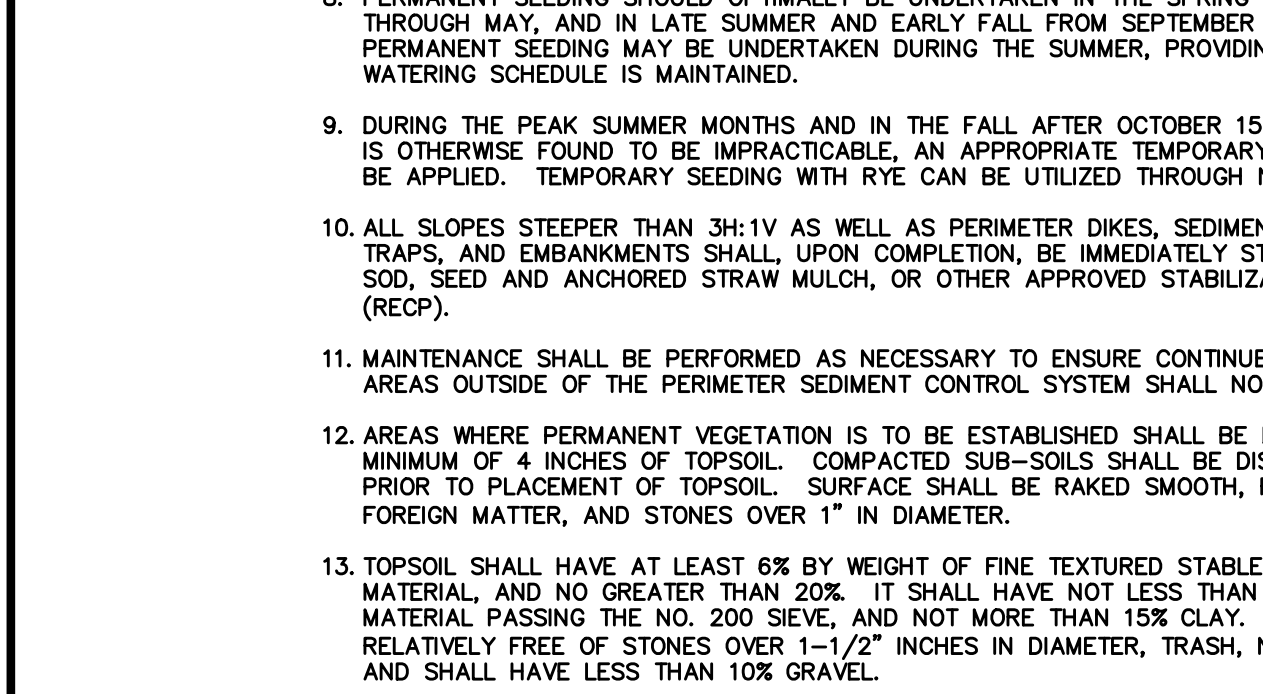
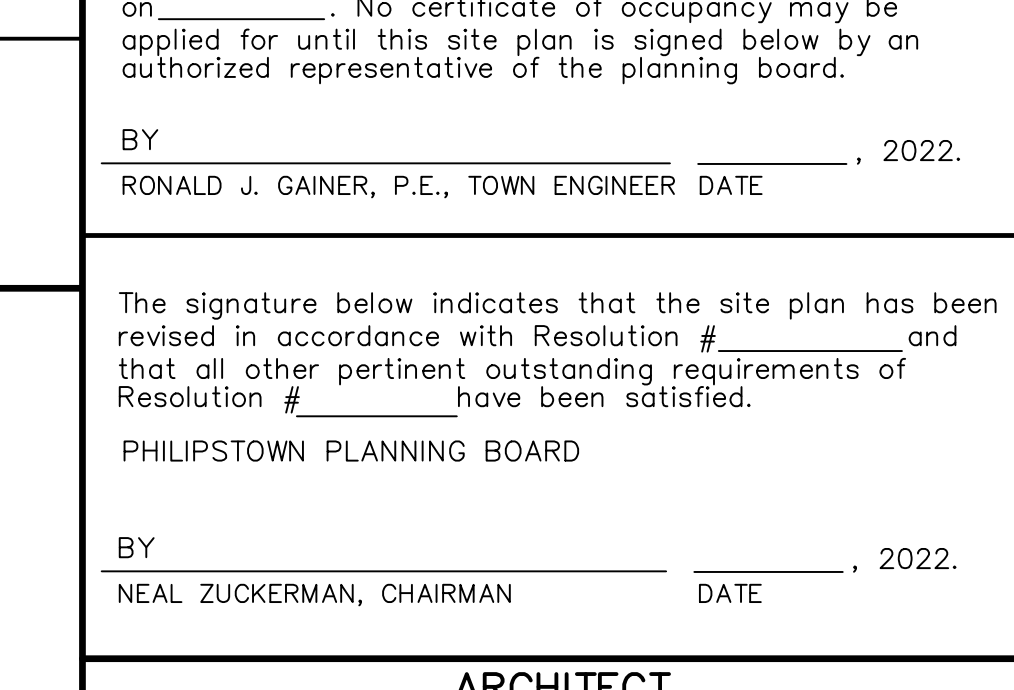
WARNING STAMP
ALTERATION OF THIS DOCUMENT IN ANY WAY, BY ANY PERSON NOT UNDER THE DIRECTION OF A LICENSED PROFESSIONAL ENGINEER OR LAND SURVEYOR, IS APPROPRIATE, IS A VIOLATION OF THE EDUCATION LAW OF THE STATE OF NEW YORK.



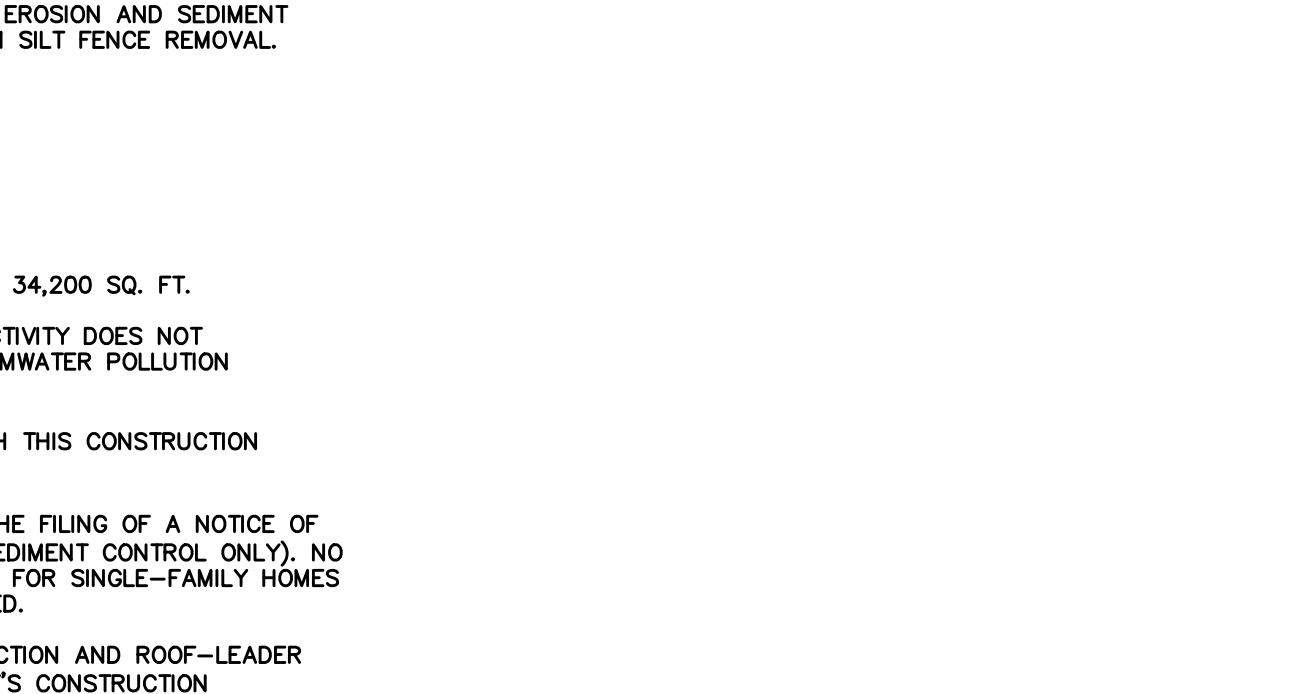
COMPOST FILTER SOCK
REQUIREMENTS
1. SOIL FABRIC MATERIAL AND COMPOST SHALL MEET THE STANDARDS LISTED IN THE COMPOST FILTER SOCK SPECIFICATIONS.



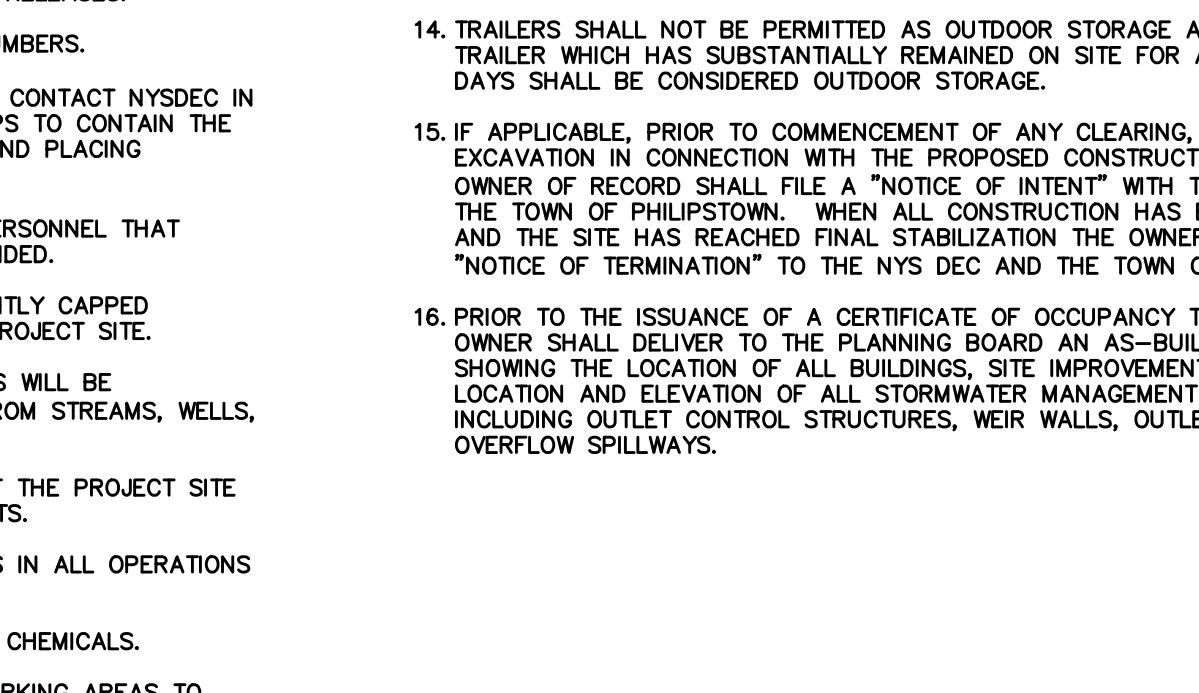
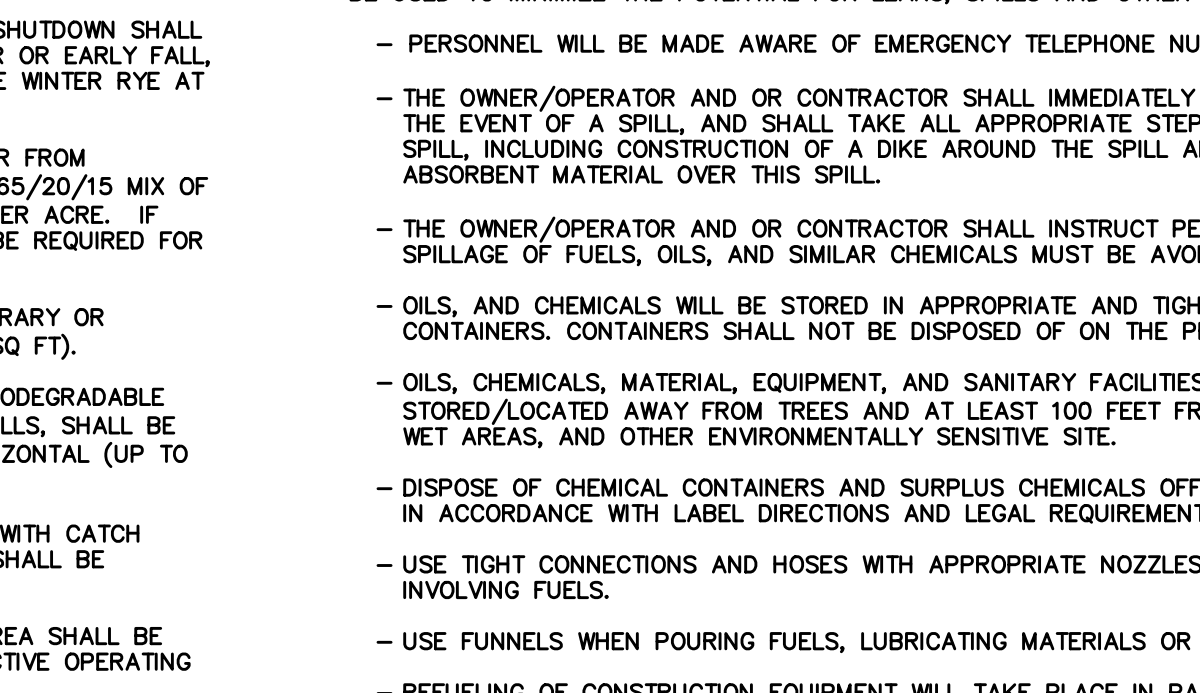
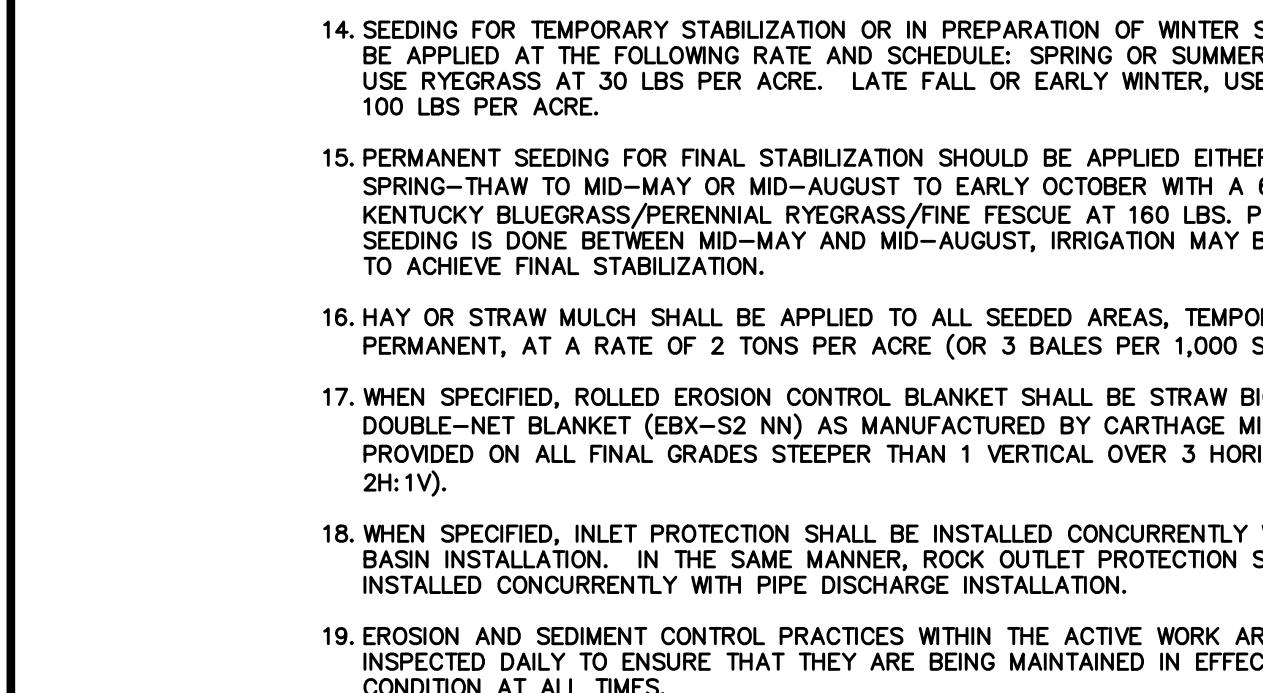
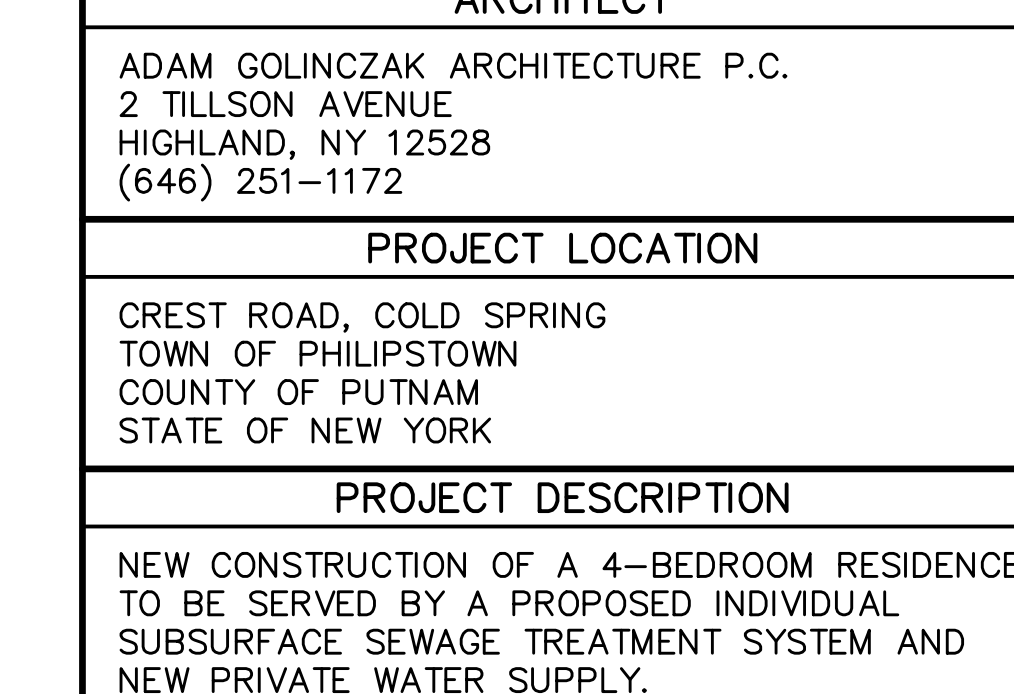
SCENIC RIDGELINE LEGEND
SITE-SPECIFIC RIDGELINE DELINEATION
RIDGELINE PROTECTION AREA



COMPOST FILTER SOCK
REQUIREMENTS
1. SOIL FABRIC MATERIAL AND COMPOST SHALL MEET THE STANDARDS LISTED IN THE COMPOST FILTER SOCK SPECIFICATIONS.



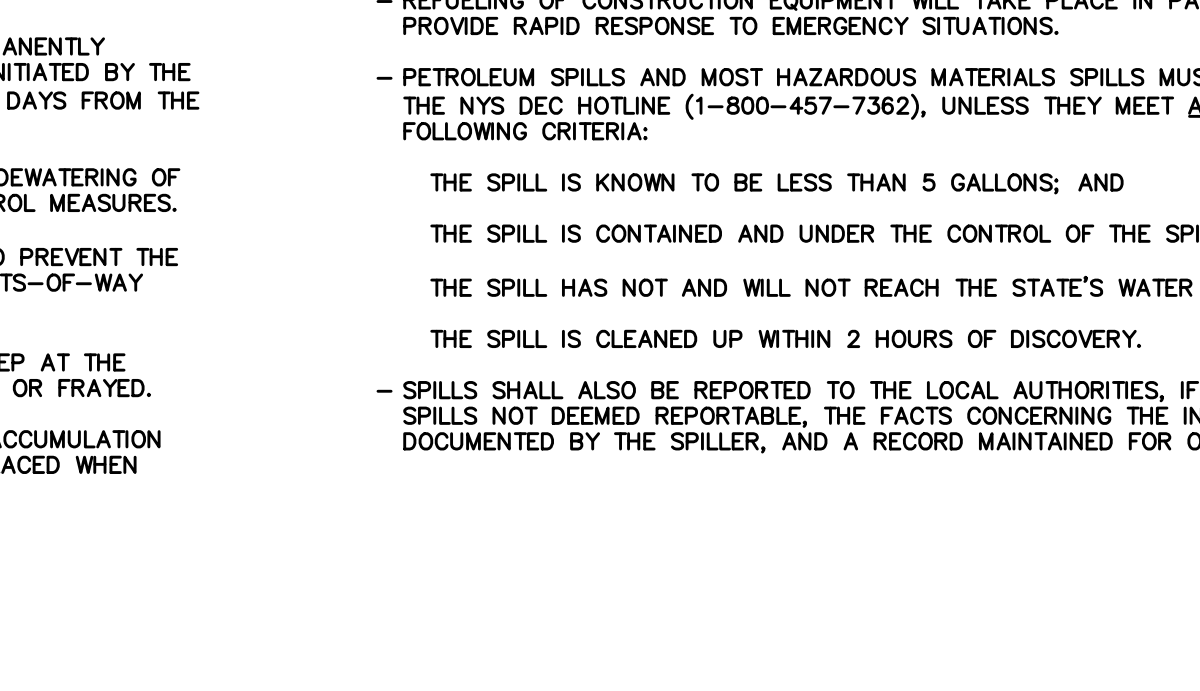
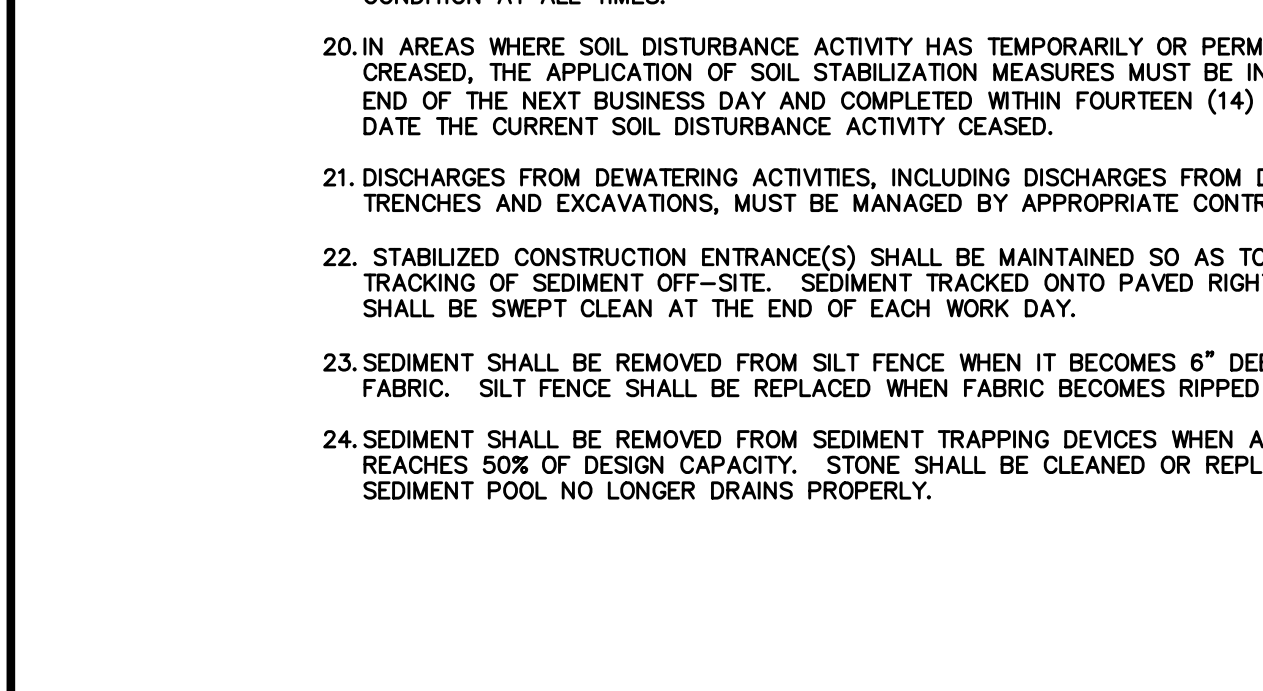
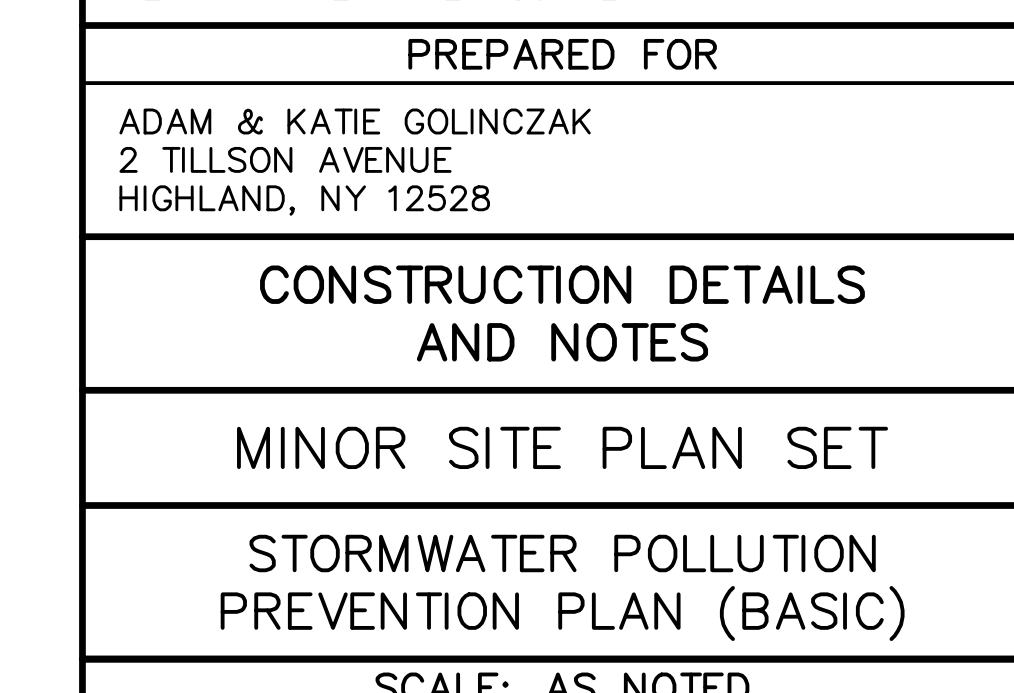
PLANNING BOARD APPROVAL
Final site plan approval granted by Resolution # _____ on _____.



COMPOST FILTER SOCK
REQUIREMENTS
1. SOIL FABRIC MATERIAL AND COMPOST SHALL MEET THE STANDARDS LISTED IN THE COMPOST FILTER SOCK SPECIFICATIONS.



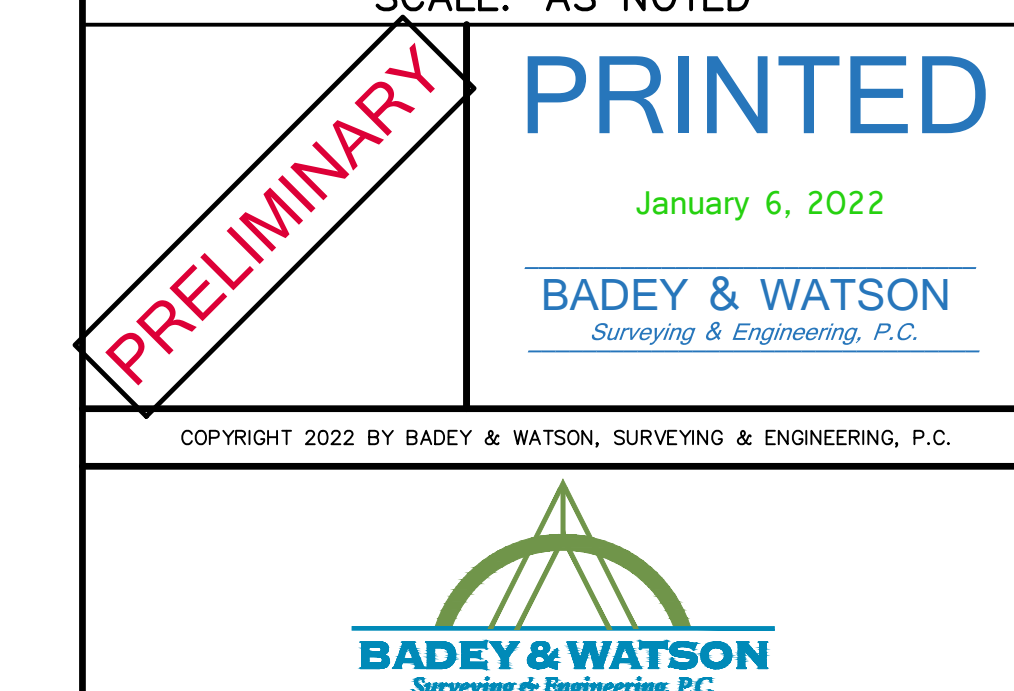
PROJECT LOCATION
CREST ROAD, COLD SPRING TOWN OF PHILIPSTOWN COUNTY OF PUTNAM STATE OF NEW YORK



COMPOST FILTER SOCK
REQUIREMENTS
1. SOIL FABRIC MATERIAL AND COMPOST SHALL MEET THE STANDARDS LISTED IN THE COMPOST FILTER SOCK SPECIFICATIONS.



PROJECT DESCRIPTION
NEW CONSTRUCTION OF A 4-BEDROOM RESIDENCE TO BE SERVED BY A PROPOSED INDIVIDUAL SUBSURFACE SEWER TREATMENT SYSTEM AND NEW PRIVATE WATER SUPPLY



COMPOST FILTER SOCK
REQUIREMENTS
1. SOIL FABRIC MATERIAL AND COMPOST SHALL MEET THE STANDARDS LISTED IN THE COMPOST FILTER SOCK SPECIFICATIONS.



CONSTRUCTION DETAILS AND NOTES
MINOR SITE PLAN SET
STORMWATER POLLUTION PREVENTION PLAN (BASIC)

