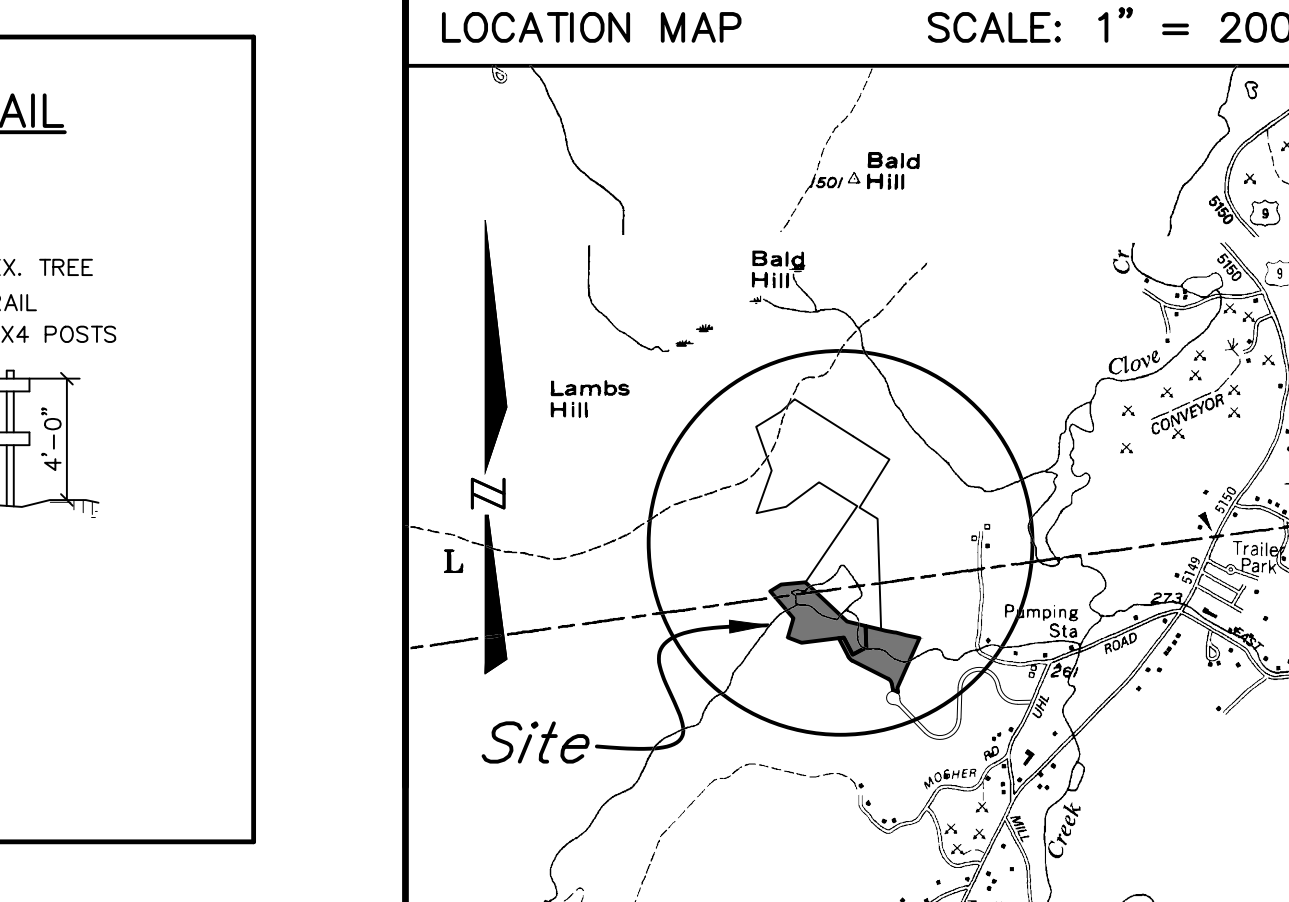
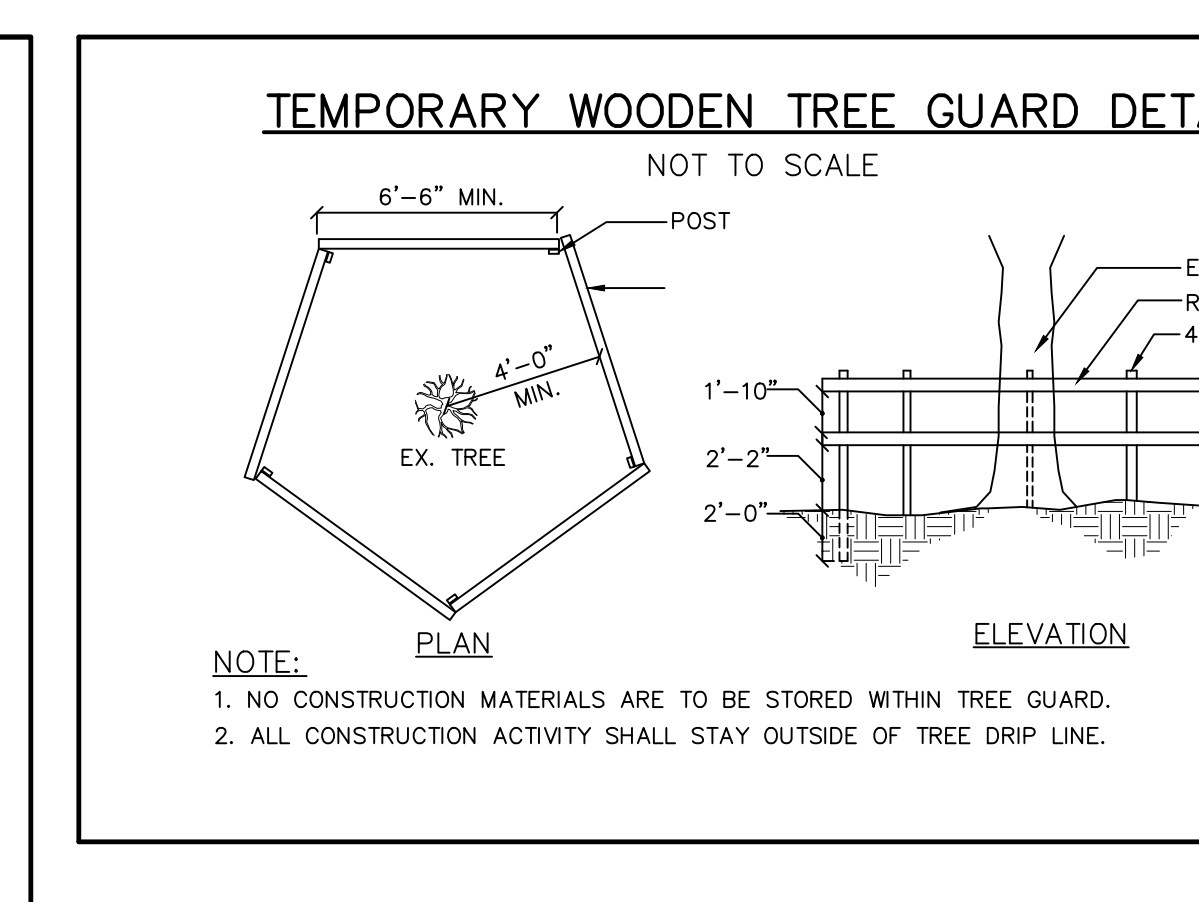
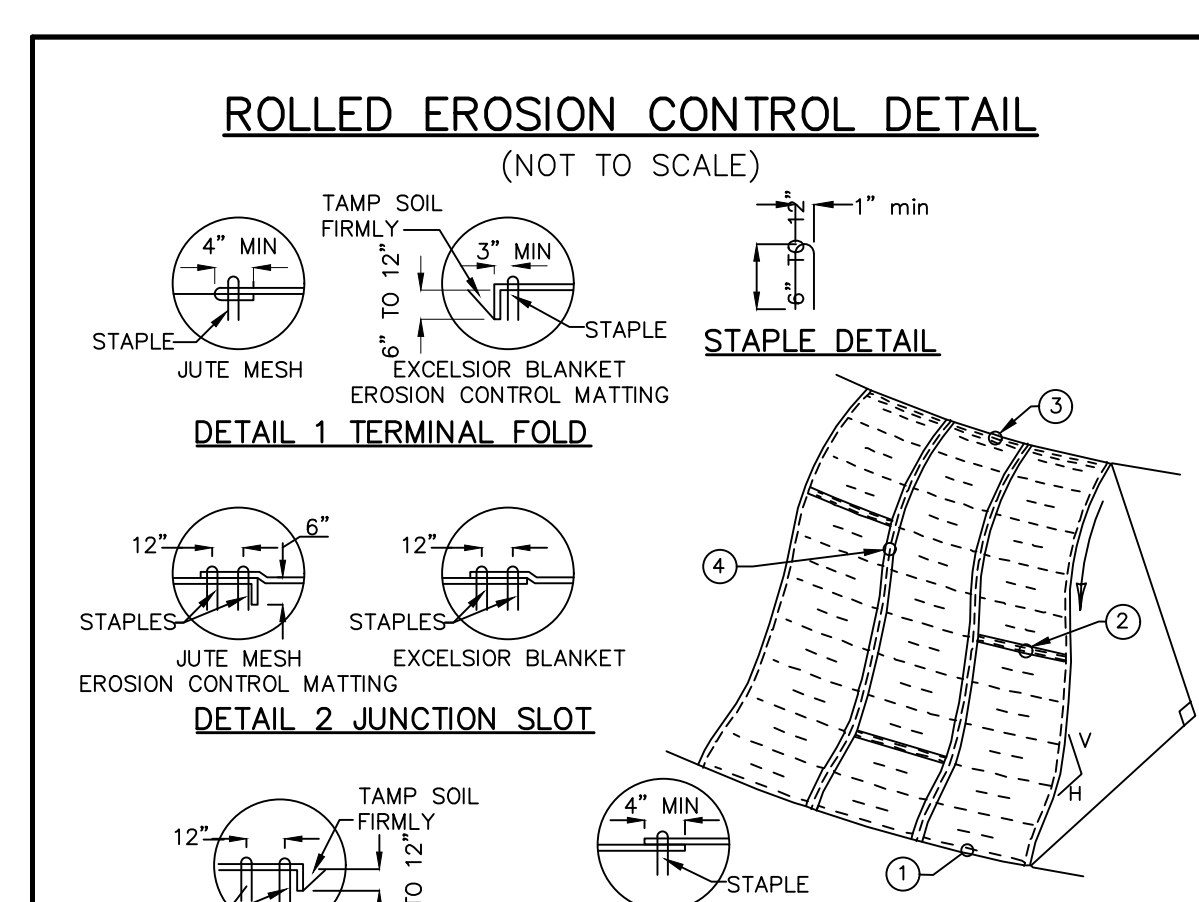
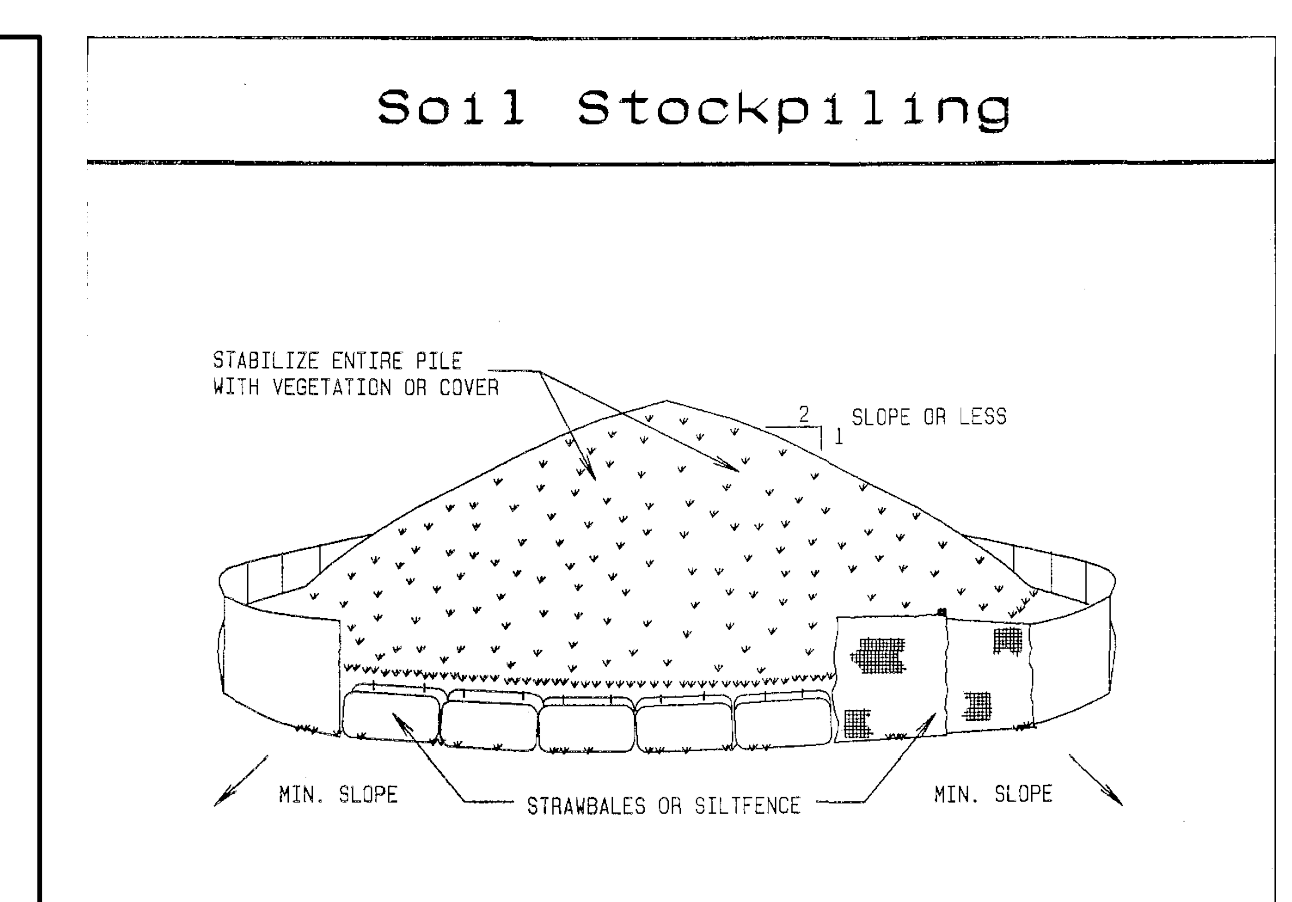


CONSTRUCTION SPECIFICATIONS
1. ALL GRADED OR DISTURBED AREAS INCLUDING SLOPES SHALL BE PROTECTED DURING CLEARING AND CONSTRUCTION IN ACCORDANCE WITH THE APPROVED SEDIMENT CONTROL PLAN UNTIL THEY ARE PERMANENTLY STABILIZED.



CONSTRUCTION SPECIFICATIONS
1. WOMEN WIRE FENCE TO BE FASTENED SECURELY TO FENCE POSTS WITH WIRE TIES OR STAPLES. POSTS SHALL BE STEEL EITHER 1" OR 1 1/2" TYPE OR HARDWOOD.

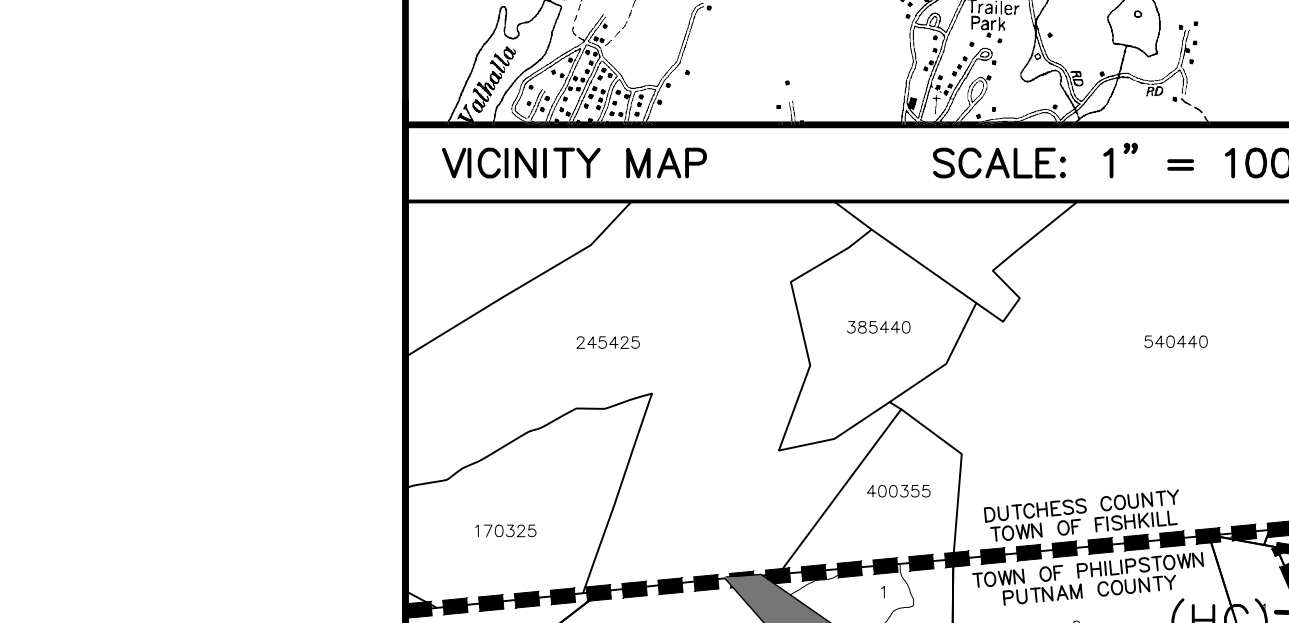
CONSTRUCTION SPECIFICATIONS
1. STONE SIZE - USE #2 STONE, OR RECLAIMED OR RECYCLED CONCRETE EQUIVALENT.

CONSTRUCTION SPECIFICATIONS
1. AREA CHOSEN FOR STOCKPILING OPERATIONS SHALL BE DRY AND STABLE.

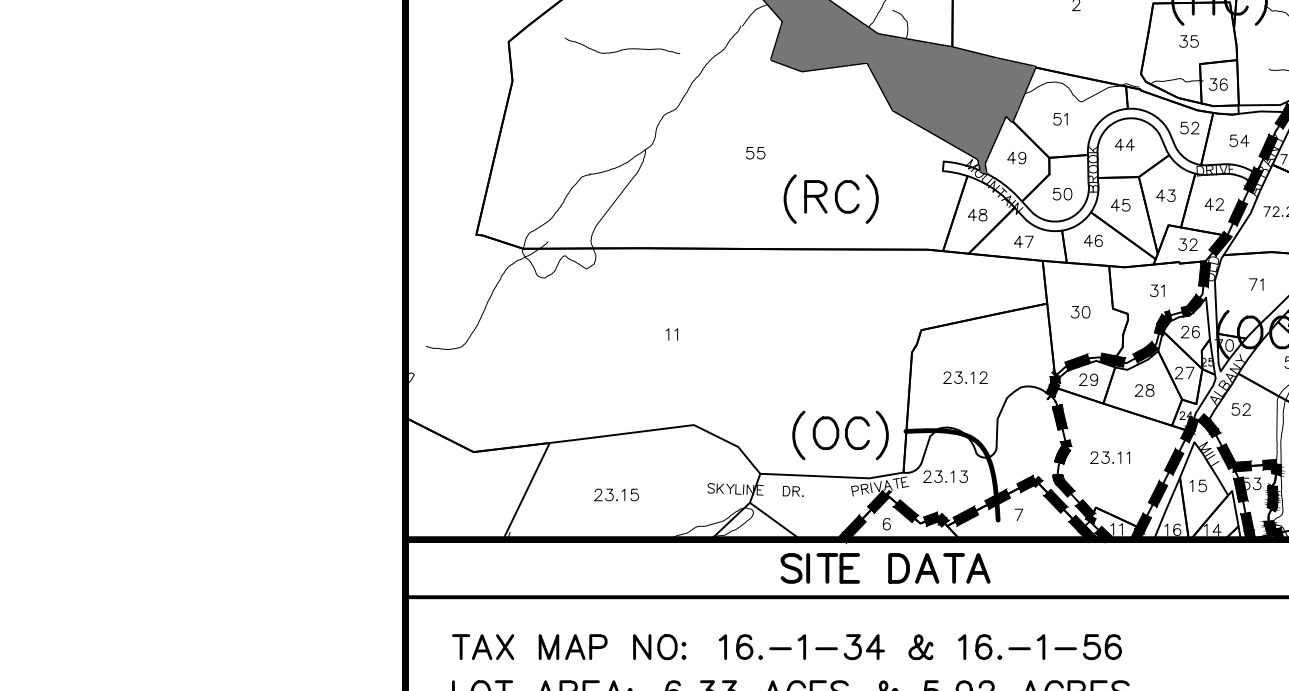
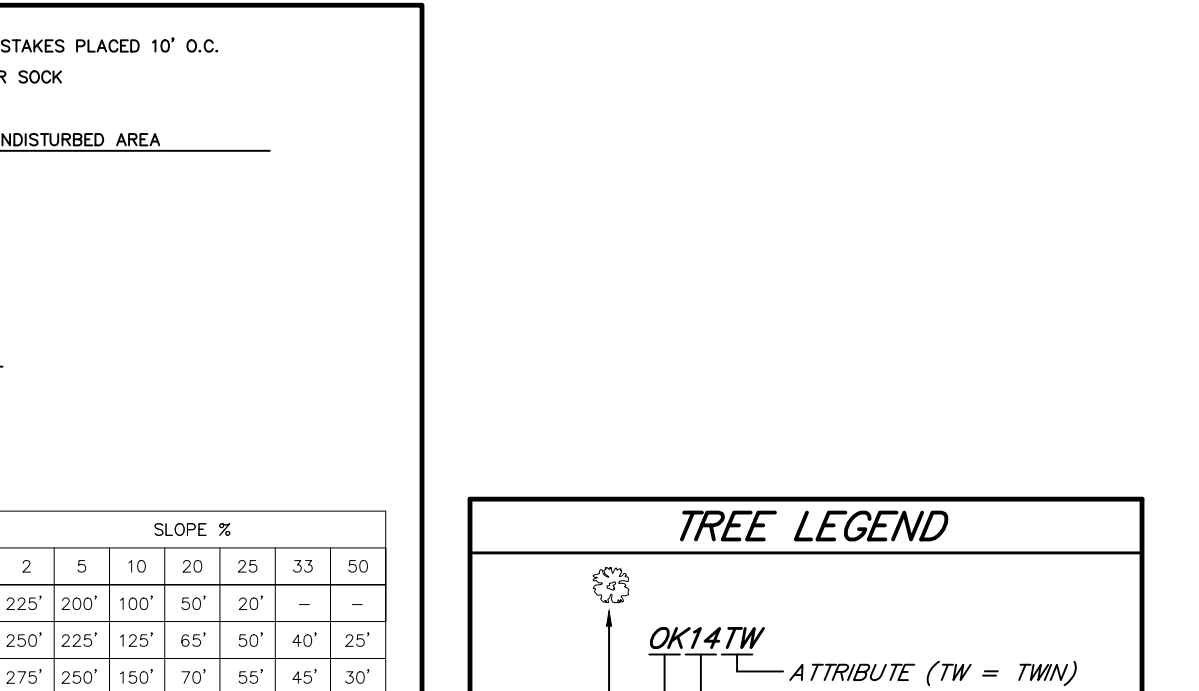
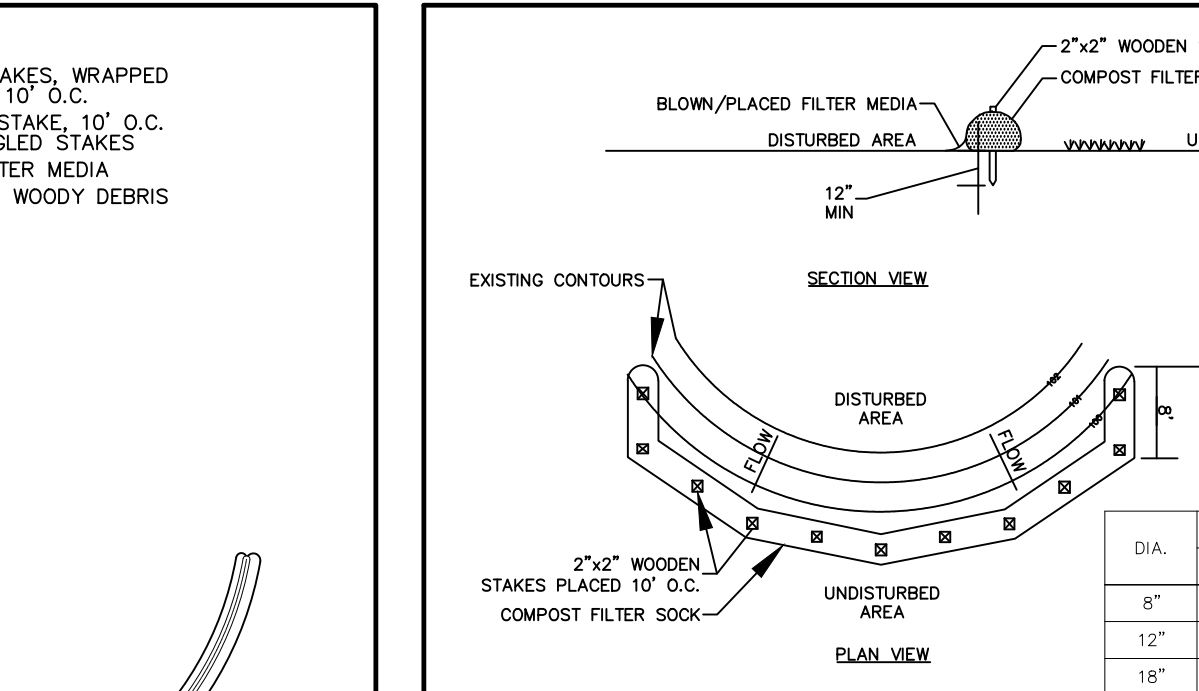
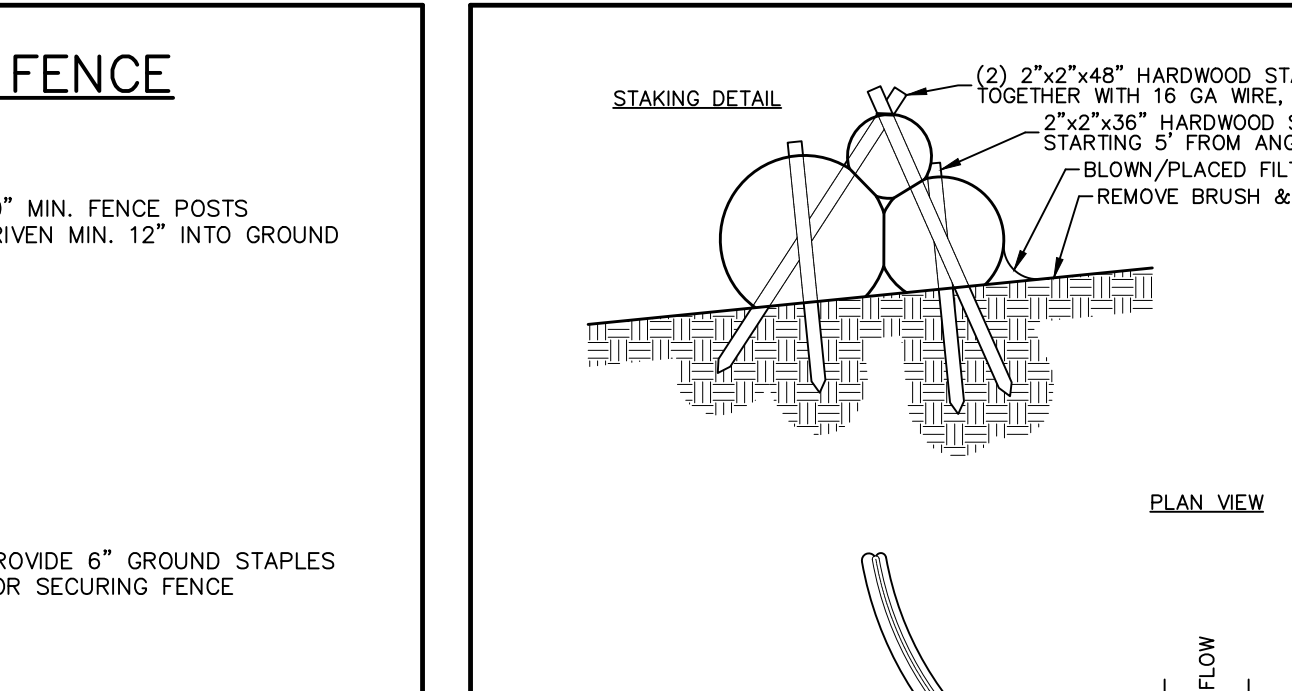
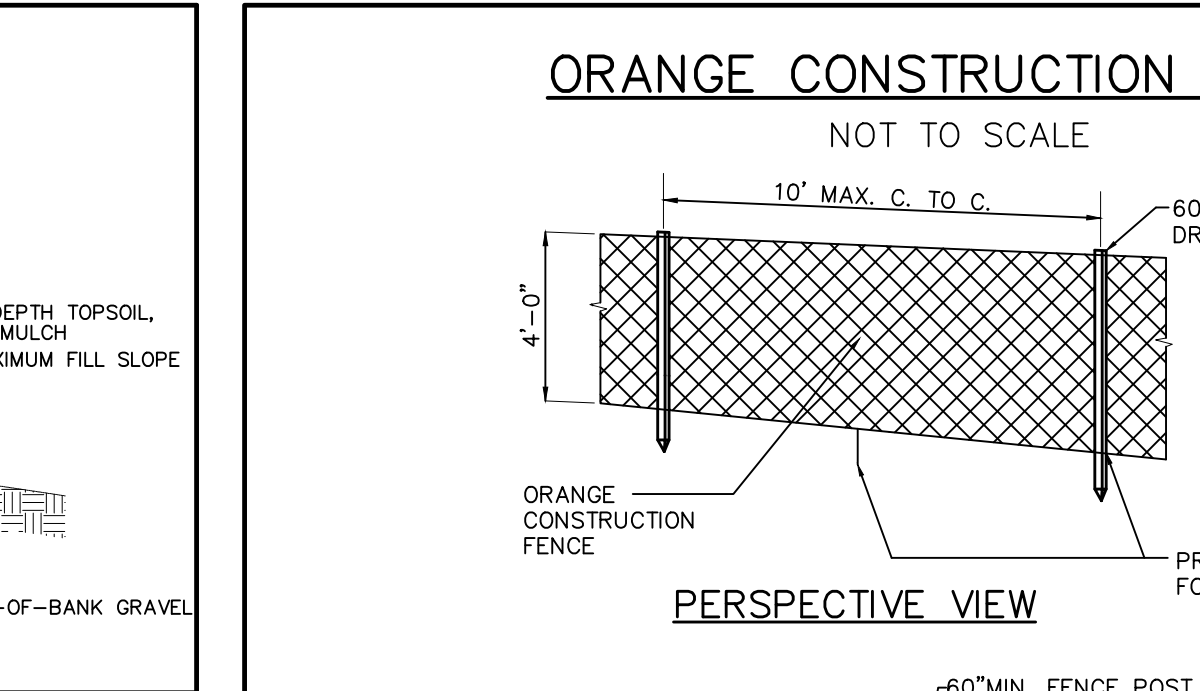
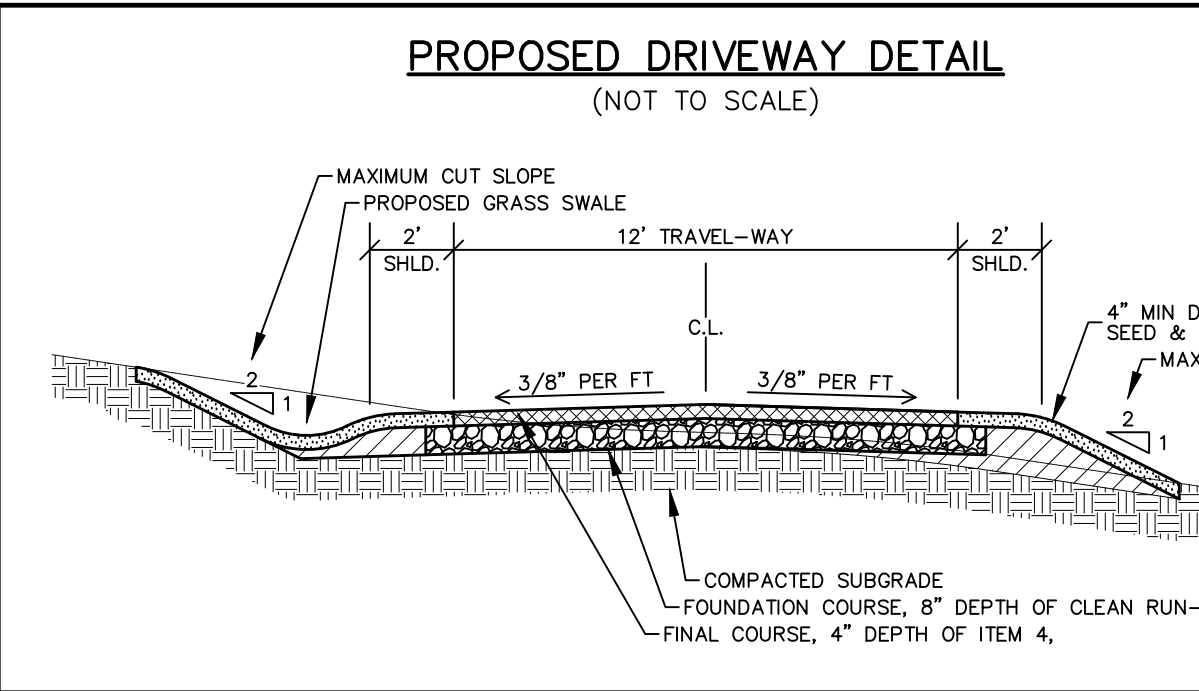
INSTALLATION NOTES
1. AREA CHOSEN FOR STOCKPILING OPERATIONS SHALL BE DRY AND STABLE.

CONSTRUCTION SPECIFICATIONS
1. APPLY TO SLOPES GREATER THAN 3H:1V OR WHERE NECESSARY TO AID IN ESTABLISHING VEGETATION.

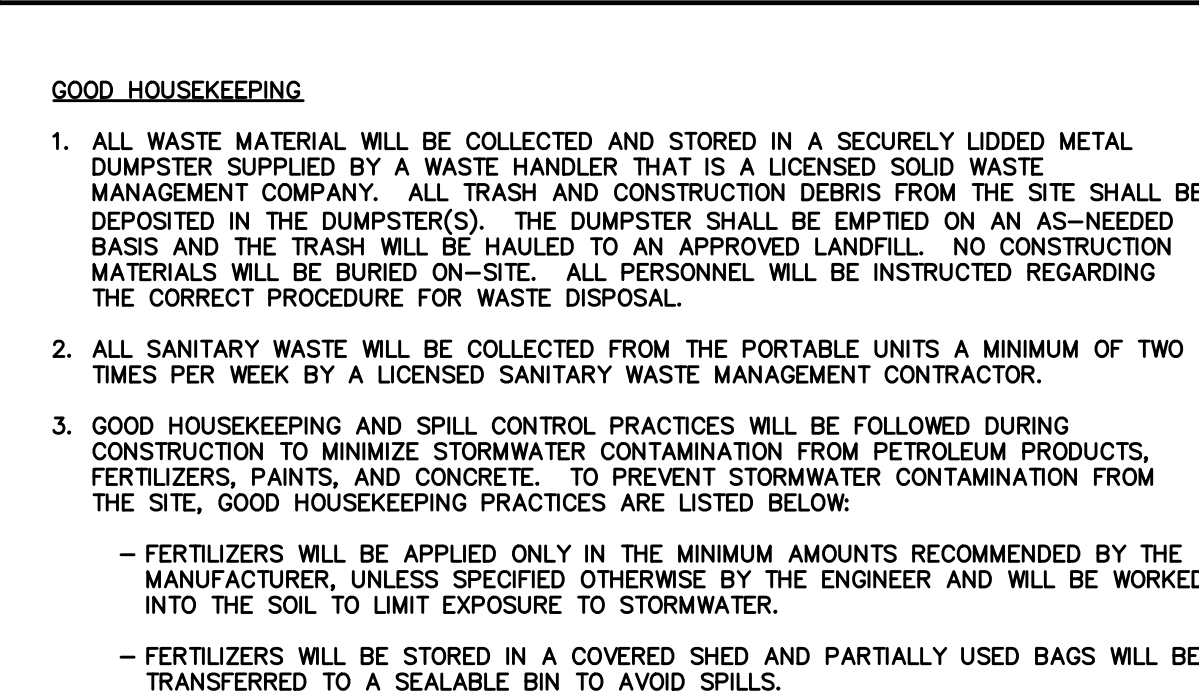
CONSTRUCTION SPECIFICATIONS
1. APPLY TO SLOPES GREATER THAN 3H:1V OR WHERE NECESSARY TO AID IN ESTABLISHING VEGETATION.



LANDGRADING SPECIFICATIONS
1. ALL GRADED AREAS INCLUDING SLOPES SHALL BE PROTECTED DURING CLEARING AND CONSTRUCTION IN ACCORDANCE WITH THE APPROVED SEDIMENT CONTROL PLAN UNTIL THEY ARE PERMANENTLY STABILIZED.



EROSION & SEDIMENT CONTROL NOTES
1. PRIOR TO THE START OF CONSTRUCTION ACTIVITY, THE TEMPORARY STRUCTURAL SEDIMENT CONTROLS (SILT FENCE, STABILIZED CONSTRUCTION ENTRANCE, ETC.) FOR THE ANTICIPATED WORK MUST BE INSTALLED.

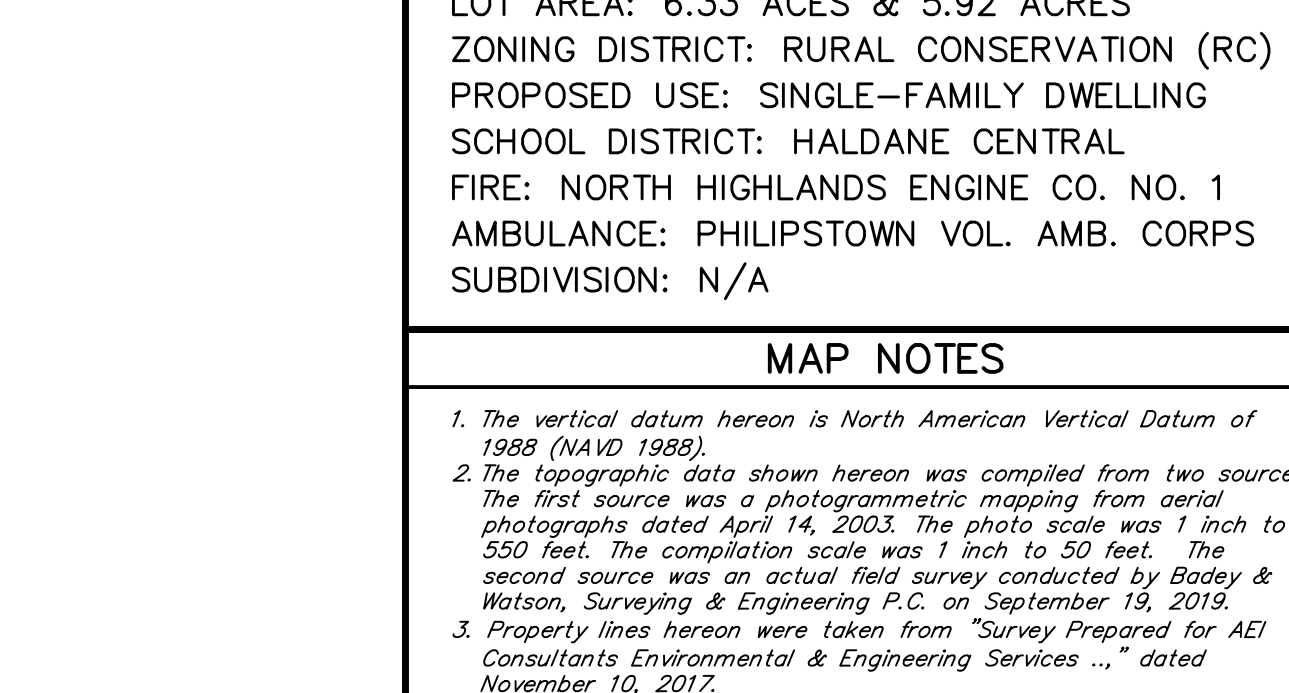


PHILIPSTOWN STANDARD SITE PLAN NOTES
1. ALL EXISTING UTILITIES SHALL BE PLACED UNDERGROUND.

COMPOST FILTER SOCK SEDIMENT TRAP ST-III
1. SOCK FABRIC MATERIAL AND COMPOST SHALL MEET THE STANDARDS LISTED IN THE COMPOST FILTER SOCK DETAIL.

COMPOST FILTER SOCK
1. SOCK FABRIC MATERIAL AND COMPOST SHALL MEET THE STANDARDS LISTED IN THE COMPOST FILTER SOCK DETAIL.

COMPOST FILTER SOCK
1. SOCK FABRIC MATERIAL AND COMPOST SHALL MEET THE STANDARDS LISTED IN THE COMPOST FILTER SOCK DETAIL.



GOOD HOUSEKEEPING
1. ALL WASTE MATERIAL WILL BE COLLECTED AND STORED IN A SECURELY LIDDED METAL DUMPSTER SUPPLIED BY A WASTE HANDLER THAT IS A LICENSED SOLID WASTE MANAGEMENT COMPANY.

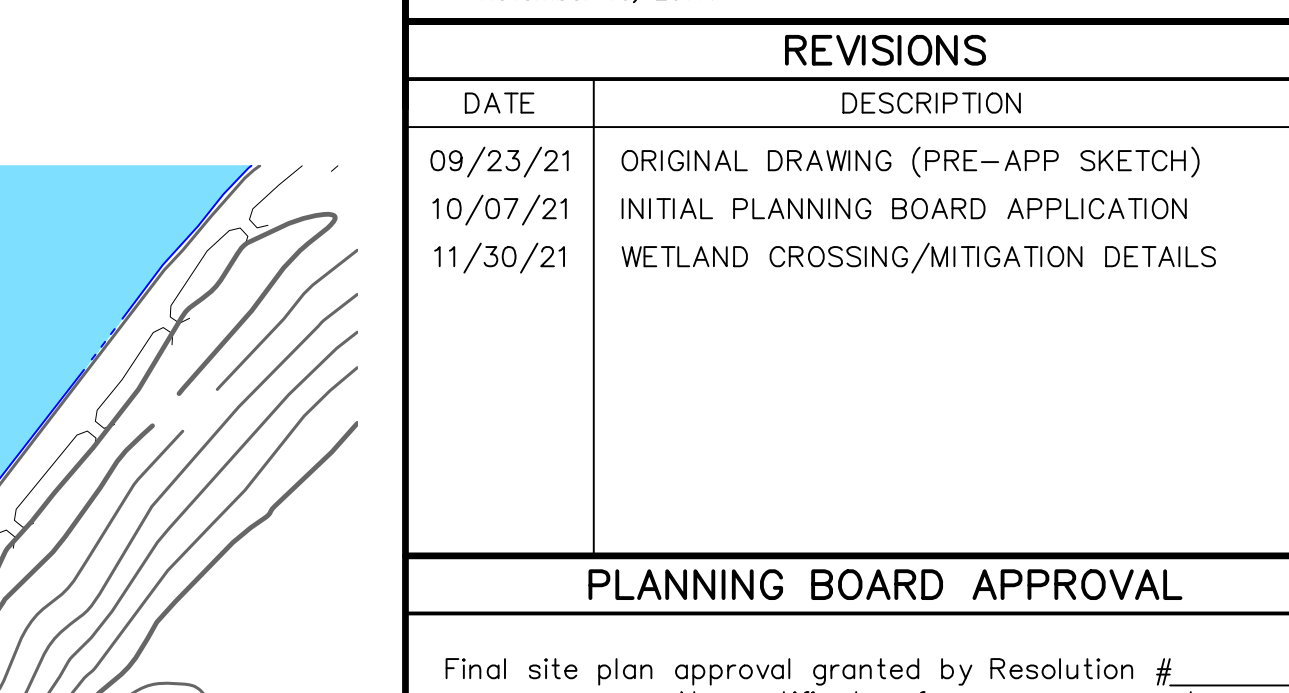
PHILIPSTOWN STANDARD SITE PLAN NOTES
1. ALL EXISTING UTILITIES SHALL BE PLACED UNDERGROUND.

COMPOST FILTER SOCK SEDIMENT TRAP ST-III
1. SOCK FABRIC MATERIAL AND COMPOST SHALL MEET THE STANDARDS LISTED IN THE COMPOST FILTER SOCK DETAIL.

COMPOST FILTER SOCK
1. SOCK FABRIC MATERIAL AND COMPOST SHALL MEET THE STANDARDS LISTED IN THE COMPOST FILTER SOCK DETAIL.

COMPOST FILTER SOCK
1. SOCK FABRIC MATERIAL AND COMPOST SHALL MEET THE STANDARDS LISTED IN THE COMPOST FILTER SOCK DETAIL.

COMPOST FILTER SOCK
1. SOCK FABRIC MATERIAL AND COMPOST SHALL MEET THE STANDARDS LISTED IN THE COMPOST FILTER SOCK DETAIL.



UNDERGROUND WARNING - NYS CODE RULE 753
NEW YORK STATE INDUSTRIAL CODE 83 REQUIRES EXCAVATORS TO CALL AND SAFELY NEW YORK, INC. (800-862-7362) FOR A MEMBER-UTILITY LOCATION REQUEST AT LEAST TWO (2) WORKING DAYS, BUT NOT MORE THAN TEN (10) WORKING DAYS BEFORE ANY EXCAVATION OR DEMOLITION STARTS, REGARDLESS OF LOCATION. NOT ALL UTILITIES AND UTILITIES ARE MEMBERS OF DIG SAFELY NEW YORK, INC. AND NON-MEMBER UTILITY OPERATORS MUST BE CONTACTED DIRECTLY.

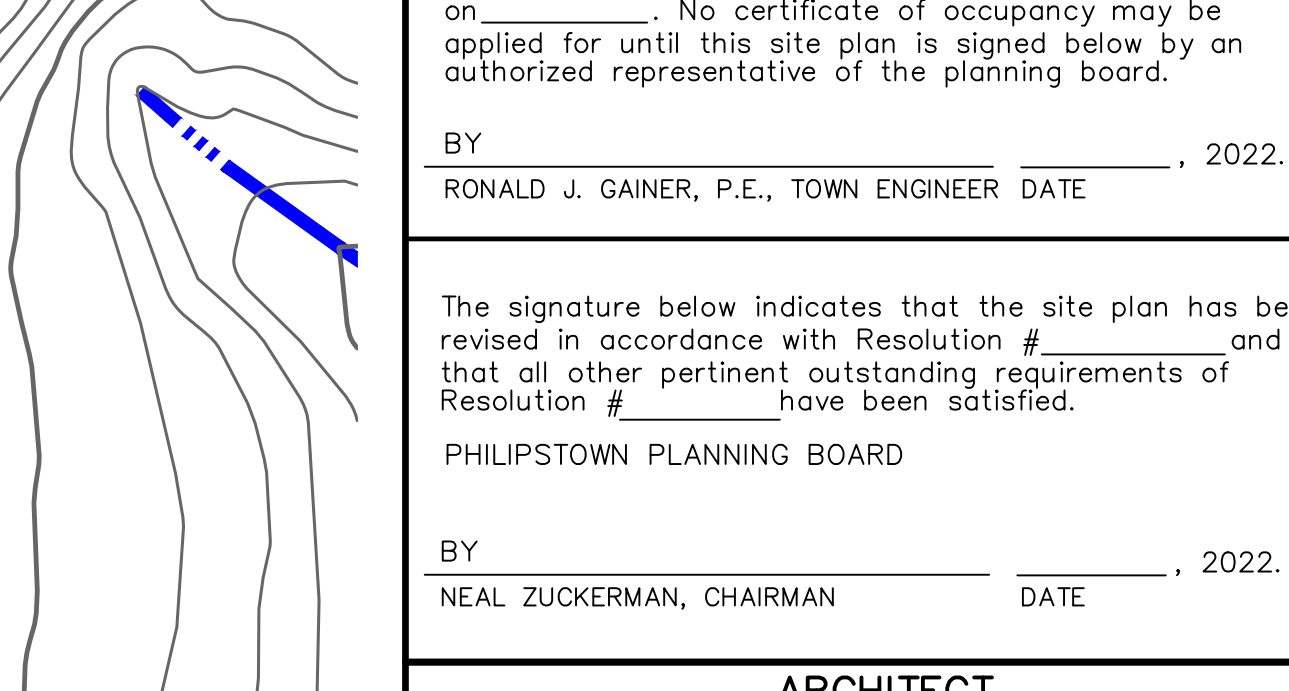
UNDERGROUND WARNING - NYS CODE RULE 753
NEW YORK STATE INDUSTRIAL CODE 83 REQUIRES EXCAVATORS TO CALL AND SAFELY NEW YORK, INC. (800-862-7362) FOR A MEMBER-UTILITY LOCATION REQUEST AT LEAST TWO (2) WORKING DAYS, BUT NOT MORE THAN TEN (10) WORKING DAYS BEFORE ANY EXCAVATION OR DEMOLITION STARTS, REGARDLESS OF LOCATION. NOT ALL UTILITIES AND UTILITIES ARE MEMBERS OF DIG SAFELY NEW YORK, INC. AND NON-MEMBER UTILITY OPERATORS MUST BE CONTACTED DIRECTLY.

UNDERGROUND WARNING - NYS CODE RULE 753
NEW YORK STATE INDUSTRIAL CODE 83 REQUIRES EXCAVATORS TO CALL AND SAFELY NEW YORK, INC. (800-862-7362) FOR A MEMBER-UTILITY LOCATION REQUEST AT LEAST TWO (2) WORKING DAYS, BUT NOT MORE THAN TEN (10) WORKING DAYS BEFORE ANY EXCAVATION OR DEMOLITION STARTS, REGARDLESS OF LOCATION. NOT ALL UTILITIES AND UTILITIES ARE MEMBERS OF DIG SAFELY NEW YORK, INC. AND NON-MEMBER UTILITY OPERATORS MUST BE CONTACTED DIRECTLY.

UNDERGROUND WARNING - NYS CODE RULE 753
NEW YORK STATE INDUSTRIAL CODE 83 REQUIRES EXCAVATORS TO CALL AND SAFELY NEW YORK, INC. (800-862-7362) FOR A MEMBER-UTILITY LOCATION REQUEST AT LEAST TWO (2) WORKING DAYS, BUT NOT MORE THAN TEN (10) WORKING DAYS BEFORE ANY EXCAVATION OR DEMOLITION STARTS, REGARDLESS OF LOCATION. NOT ALL UTILITIES AND UTILITIES ARE MEMBERS OF DIG SAFELY NEW YORK, INC. AND NON-MEMBER UTILITY OPERATORS MUST BE CONTACTED DIRECTLY.

UNDERGROUND WARNING - NYS CODE RULE 753
NEW YORK STATE INDUSTRIAL CODE 83 REQUIRES EXCAVATORS TO CALL AND SAFELY NEW YORK, INC. (800-862-7362) FOR A MEMBER-UTILITY LOCATION REQUEST AT LEAST TWO (2) WORKING DAYS, BUT NOT MORE THAN TEN (10) WORKING DAYS BEFORE ANY EXCAVATION OR DEMOLITION STARTS, REGARDLESS OF LOCATION. NOT ALL UTILITIES AND UTILITIES ARE MEMBERS OF DIG SAFELY NEW YORK, INC. AND NON-MEMBER UTILITY OPERATORS MUST BE CONTACTED DIRECTLY.

UNDERGROUND WARNING - NYS CODE RULE 753
NEW YORK STATE INDUSTRIAL CODE 83 REQUIRES EXCAVATORS TO CALL AND SAFELY NEW YORK, INC. (800-862-7362) FOR A MEMBER-UTILITY LOCATION REQUEST AT LEAST TWO (2) WORKING DAYS, BUT NOT MORE THAN TEN (10) WORKING DAYS BEFORE ANY EXCAVATION OR DEMOLITION STARTS, REGARDLESS OF LOCATION. NOT ALL UTILITIES AND UTILITIES ARE MEMBERS OF DIG SAFELY NEW YORK, INC. AND NON-MEMBER UTILITY OPERATORS MUST BE CONTACTED DIRECTLY.



LEGEND
WB - 100' WETLAND BUFFER BOUNDARY
PROPOSED LIMIT OF DISTURBANCE
EXISTING TREE TO BE PROTECTED DURING CONSTRUCTION
EXISTING TREE TO BE REMOVED

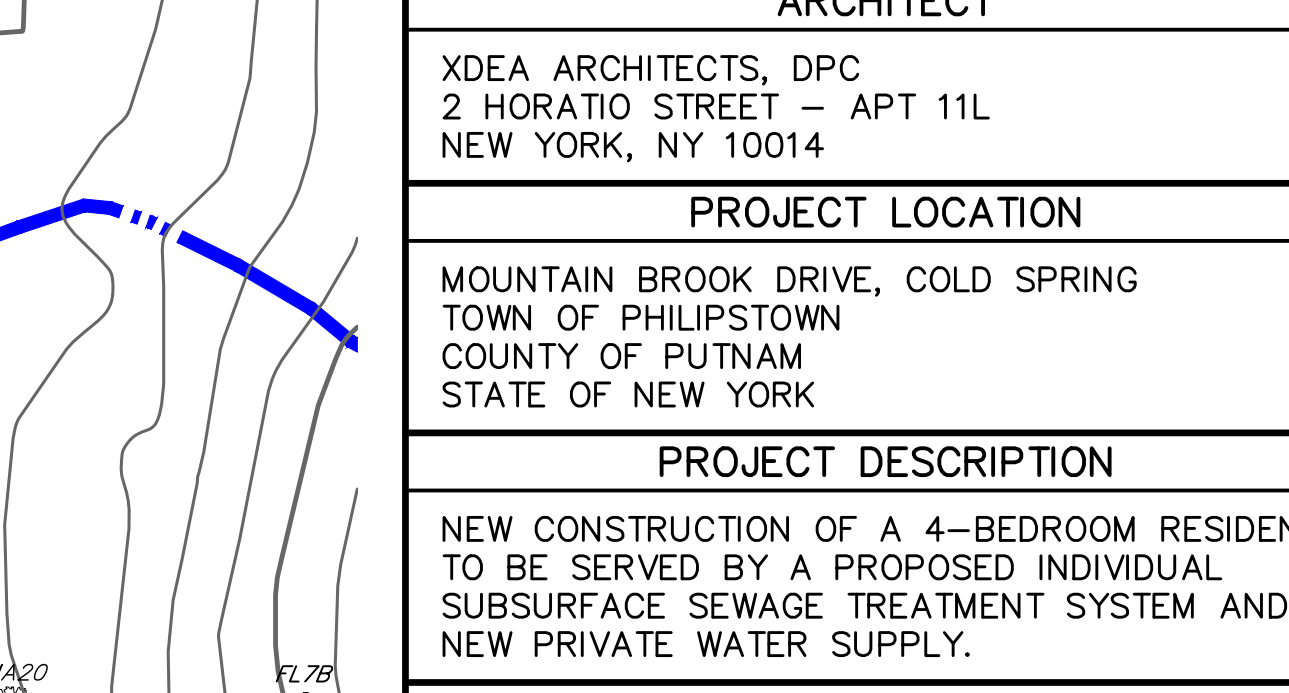
LEGEND
WB - 100' WETLAND BUFFER BOUNDARY
PROPOSED LIMIT OF DISTURBANCE
EXISTING TREE TO BE PROTECTED DURING CONSTRUCTION
EXISTING TREE TO BE REMOVED

LEGEND
WB - 100' WETLAND BUFFER BOUNDARY
PROPOSED LIMIT OF DISTURBANCE
EXISTING TREE TO BE PROTECTED DURING CONSTRUCTION
EXISTING TREE TO BE REMOVED

LEGEND
WB - 100' WETLAND BUFFER BOUNDARY
PROPOSED LIMIT OF DISTURBANCE
EXISTING TREE TO BE PROTECTED DURING CONSTRUCTION
EXISTING TREE TO BE REMOVED

LEGEND
WB - 100' WETLAND BUFFER BOUNDARY
PROPOSED LIMIT OF DISTURBANCE
EXISTING TREE TO BE PROTECTED DURING CONSTRUCTION
EXISTING TREE TO BE REMOVED

LEGEND
WB - 100' WETLAND BUFFER BOUNDARY
PROPOSED LIMIT OF DISTURBANCE
EXISTING TREE TO BE PROTECTED DURING CONSTRUCTION
EXISTING TREE TO BE REMOVED



PROPOSED INTERMITTENT STREAM CROSSING DETAIL
SCALE: V:1"=30
H:1"=30

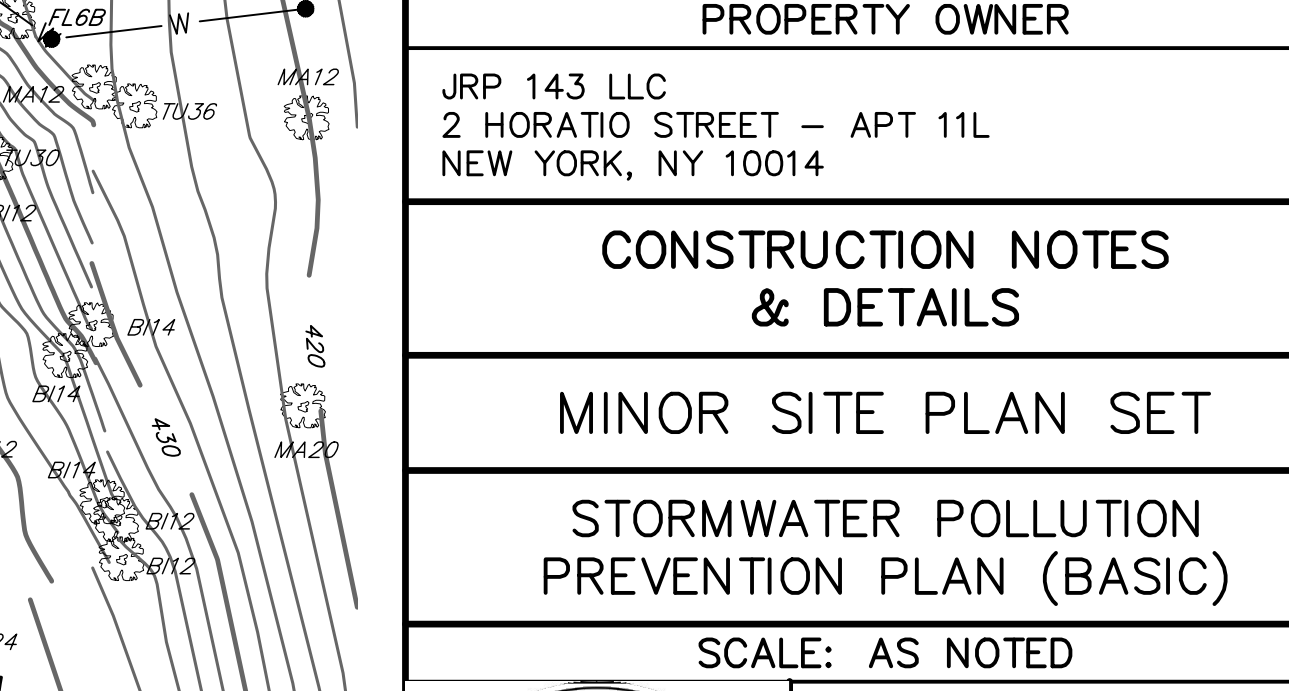
PROPOSED INTERMITTENT STREAM CROSSING DETAIL
SCALE: V:1"=30
H:1"=30

PROPOSED INTERMITTENT STREAM CROSSING DETAIL
SCALE: V:1"=30
H:1"=30

PROPOSED INTERMITTENT STREAM CROSSING DETAIL
SCALE: V:1"=30
H:1"=30

PROPOSED INTERMITTENT STREAM CROSSING DETAIL
SCALE: V:1"=30
H:1"=30

PROPOSED INTERMITTENT STREAM CROSSING DETAIL
SCALE: V:1"=30
H:1"=30



PROPOSED INTERMITTENT STREAM CROSSING DETAIL
SCALE: V:1"=30
H:1"=30

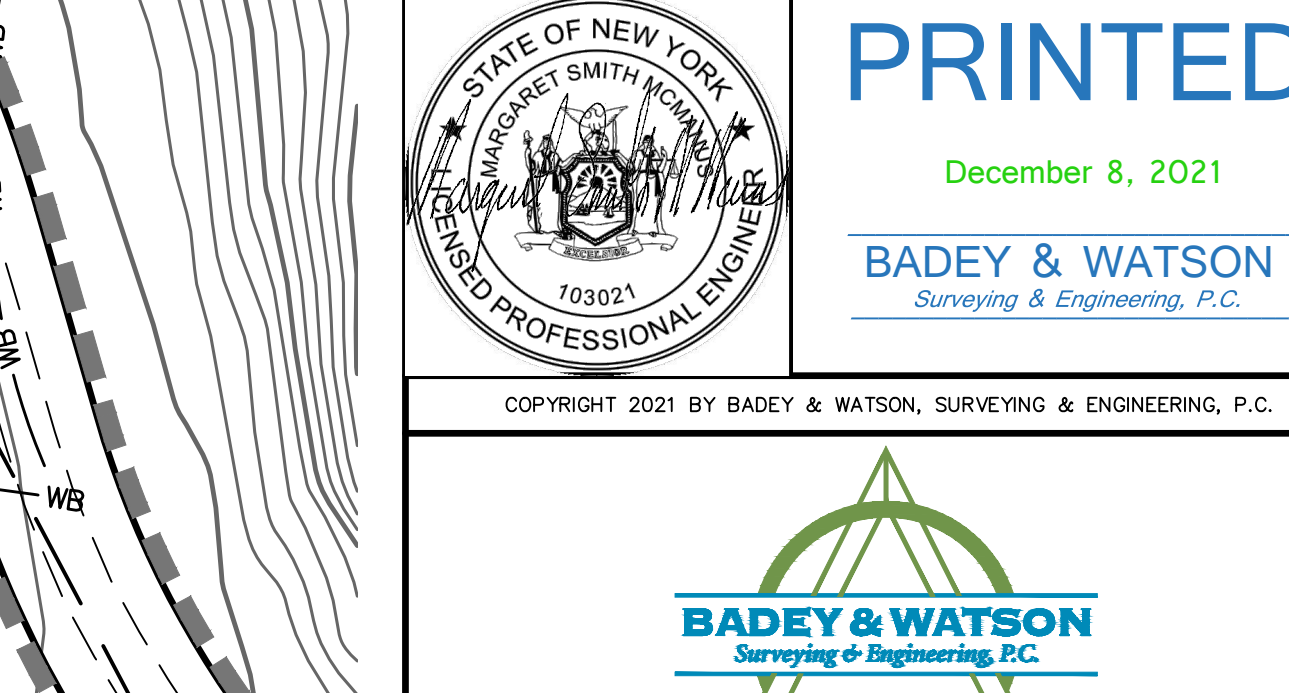
PROPOSED INTERMITTENT STREAM CROSSING DETAIL
SCALE: V:1"=30
H:1"=30

PROPOSED INTERMITTENT STREAM CROSSING DETAIL
SCALE: V:1"=30
H:1"=30

PROPOSED INTERMITTENT STREAM CROSSING DETAIL
SCALE: V:1"=30
H:1"=30

PROPOSED INTERMITTENT STREAM CROSSING DETAIL
SCALE: V:1"=30
H:1"=30

PROPOSED INTERMITTENT STREAM CROSSING DETAIL
SCALE: V:1"=30
H:1"=30



PROPOSED INTERMITTENT STREAM CROSSING DETAIL
SCALE: V:1"=30
H:1"=30

PROPOSED INTERMITTENT STREAM CROSSING DETAIL
SCALE: V:1"=30
H:1"=30

PROPOSED INTERMITTENT STREAM CROSSING DETAIL
SCALE: V:1"=30
H:1"=30

PROPOSED INTERMITTENT STREAM CROSSING DETAIL
SCALE: V:1"=30
H:1"=30

PROPOSED INTERMITTENT STREAM CROSSING DETAIL
SCALE: V:1"=30
H:1"=30

PROPOSED INTERMITTENT STREAM CROSSING DETAIL
SCALE: V:1"=30
H:1"=30



PROPOSED INTERMITTENT STREAM CROSSING DETAIL
SCALE: V:1"=30
H:1"=30

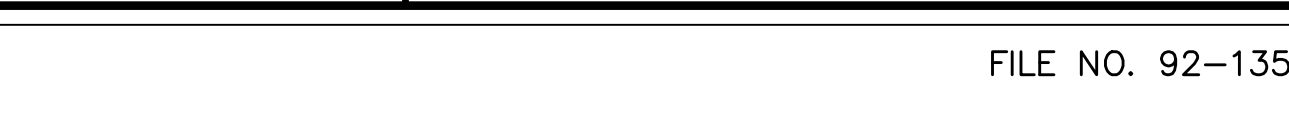
PROPOSED INTERMITTENT STREAM CROSSING DETAIL
SCALE: V:1"=30
H:1"=30

PROPOSED INTERMITTENT STREAM CROSSING DETAIL
SCALE: V:1"=30
H:1"=30

PROPOSED INTERMITTENT STREAM CROSSING DETAIL
SCALE: V:1"=30
H:1"=30

PROPOSED INTERMITTENT STREAM CROSSING DETAIL
SCALE: V:1"=30
H:1"=30

PROPOSED INTERMITTENT STREAM CROSSING DETAIL
SCALE: V:1"=30
H:1"=30



PROPOSED INTERMITTENT STREAM CROSSING DETAIL
SCALE: V:1"=30
H:1"=30

PROPOSED INTERMITTENT STREAM CROSSING DETAIL
SCALE: V:1"=30
H:1"=30

PROPOSED INTERMITTENT STREAM CROSSING DETAIL
SCALE: V:1"=30
H:1"=30

PROPOSED INTERMITTENT STREAM CROSSING DETAIL
SCALE: V:1"=30
H:1"=30

PROPOSED INTERMITTENT STREAM CROSSING DETAIL
SCALE: V:1"=30
H:1"=30

PROPOSED INTERMITTENT STREAM CROSSING DETAIL
SCALE: V:1"=30
H:1"=30

