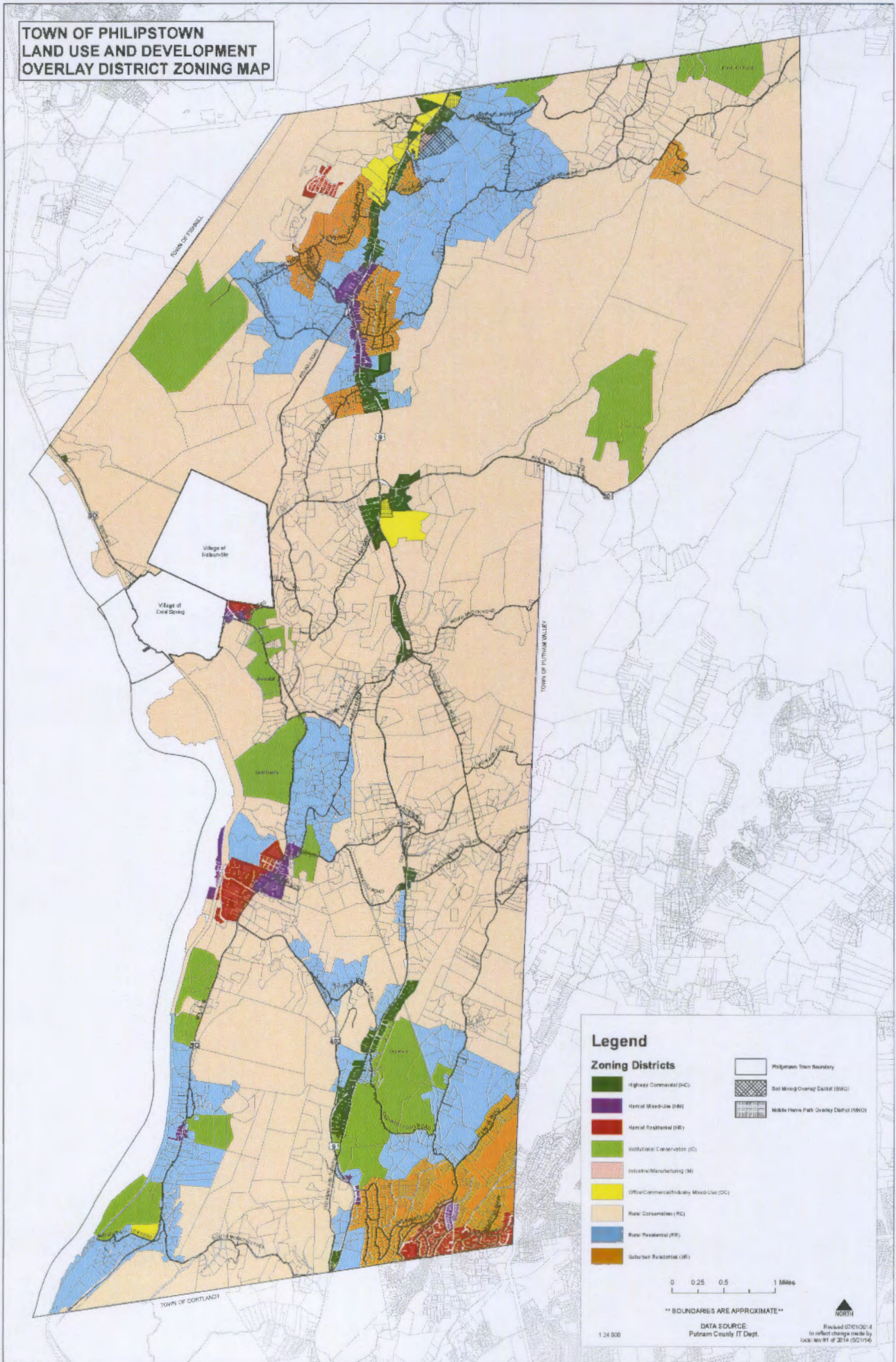


**TOWN OF PHILIPSTOWN  
LAND USE AND DEVELOPMENT  
OVERLAY DISTRICT ZONING MAP**



**Legend**

- Zoning Districts**
- Highways Commercial (HC)
  - Rural Residential (RR)
  - Suburban Residential (SR)
  - Office/Commercial/Industrial Mixed-Use (OC)
  - Rural Commercial (RC)
  - Rural Residential (RR)
  - Industrial/Manufacturing (IM)
  - Institutional/Conservation (IC)
  - General Residential (GR)
  - General Mixed-Use (GM)
  - Highway Commercial (HC)
- Philipstown Town Boundary
  - Soil Mixing Overlay District (SMO)
  - Mobile Home Park Overlay District (MHO)

0 0.25 0.5 1 Mile

\*\* BOUNDARIES ARE APPROXIMATE \*\*

1:24,000  
 DATA SOURCE:  
 Putnam County IT Dept.  
 Revised 07/01/2014  
 to reflect change made by  
 local act 99 of 2014 (02/14)